



PCB Spacers Page 01 – 22

Clearance – Threaded – Adhesive – Locking – Round – Hex

Hardware for mounting PCBs



Panel Fasteners 23 – 39

Threads – Rivets – Clips – Feet – Grommets

Fastening components for panels



Cabling Hardware 40 – 55

Glands – Ties – Bushes – Clamps – Saddles – Mounts

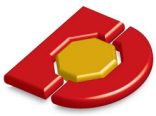
Hardware components for cabling



Component Mounts 56 – 57

Transistor mounts – LED mounts

Hardware items for mounting components



Spacers Clearance

Plastic Clearance Spacers

SPCW Series

- ▶ M2.5 & M3 Clearance
- ▶ Metric Lengths

Material: White Nylon, UL94V-2

Tolerances:

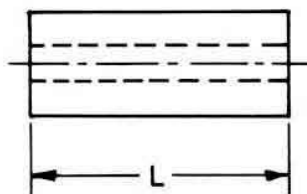
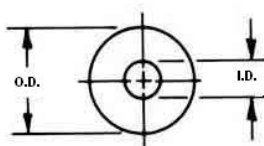
O.D. $\pm 0.13\text{mm}$
 I.D. $\pm 0.13\text{mm}$
 Length 1-13mm $\pm 0.13\text{mm}$
 14-24mm $\pm 0.25\text{mm}$

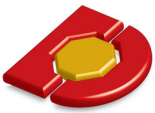
Length mm	ID OD		ID OD	
	2.7	4.2	3.2	6.3
1.0	SPCW0201		SPCW0301	
2.0	SPCW0202		SPCW0301	
3.0	SPCW0203		SPCW0303	
4.0	SPCW0204		SPCW0304	
5.0	SPCW0205		SPCW0305	
6.0	SPCW0206		SPCW0306	
7.0	SPCW0207		SPCW0307	
8.0	SPCW0208		SPCW0308	
9.0	SPCW0209		SPCW0309	
10.0	SPCW0210		SPCW0310	
12.0	SPCW0212		SPCW0312	
14.0	SPCW0214		SPCW0314	
16.0	SPCW0216		SPCW0316	
18.0	SPCW0218		SPCW0318	
20.0	SPCW0220		SPCW0320	
24.0	SPCW0224		SPCW0324	



Metric SPCB Series Heat Stabilised Black Nylon - Temperature Index 85°C

Length mm	M2.5		M3		M3		M4		M5		M6	
	ID	OD	ID	OD	ID	OD	ID	OD	ID	OD	ID	OD
	2.6	4.0	3.2	5.0	3.2	6.0	4.3	8.0	5.3	10.0	6.3	10.0
2.0	SPCB0202		SPCB0302									
3.0	SPCB0203		SPCB0303		SPCB3603		SPCB0403		SPCB0503		SPCB0603	
5.0	SPCB0205		SPCB0305		SPCB3605		SPCB0405		SPCB0505		SPCB0605	
7.5	SPCB0208		SPCB0308		SPCB3608		SPCB0408		SPCB0508		SPCB0608	
10.0	SPCB0210		SPCB0310		SPCB3610		SPCB0410		SPCB0510		SPCB0610	
15.0	SPCB0215		SPCB0315		SPCB3615		SPCB0415		SPCB0515		SPCB0615	
20.0			SPCB0320		SPCB3620		SPCB0420		SPCB0520		SPCB0620	
25.0					SPCB3625		SPCB0425				SPCB0625	
30.0					SPCB3630		SPCB0430				SPCB0630	

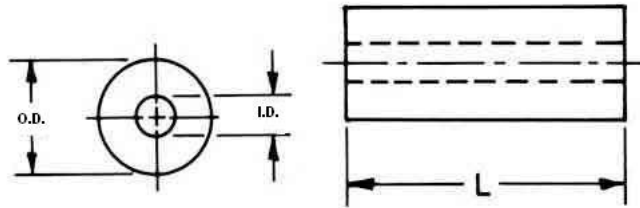




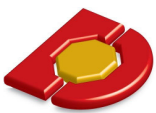
Spacers Clearance

Imperial SPCl Series Clearance Spacers - Nylon 6/6 Natural

Length mm	M3		M4		#6 Self Tapping		M4		M6	
	ID 2.9*	OD 4.8	ID 4.3	OD 6.3	ID 3.6	OD 8.0	ID 4.3	OD 8.0	ID 6.5	OD 12.7
3.2	SPCI3403		SPCI4603		SPCI3803		SPCI4803		SPCI6803	
4.8	SPCI3405		SPCI4605		SPCI3805		SPCI4805		SPCI6805	
6.3	SPCI3406		SPCI4606		SPCI3806		SPCI4806		SPCI6806	
8.0	SPCI3408		SPCI4608		SPCI3808		SPCI4808		SPCI6808	
9.5	SPCI3409		SPCI4609		SPCI3809		SPCI4809		SPCI6809	
11.1	SPCI3411		SPCI4611		SPCI3811		SPCI4811		SPCI6811	
12.7	SPCI3413		SPCI4613		SPCI3813		SPCI4813		SPCI6813	
15.9	SPCI3416		SPCI4616		SPCI3816		SPCI4816		SPCI6816	
19.1	SPCI3419		SPCI4619		SPCI3819		SPCI4819		SPCI6819	
25.4	SPCI3425		SPCI4625		SPCI3825		SPCI4825		SPCI6825	



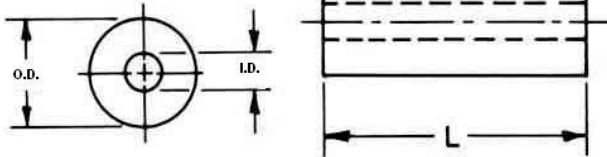
Tolerances of Metric and Imperial Spacers: ID ± 0.13 OD ± 0.39 Length ± 0.39 mm
 * Some M3 screws can be a tight fit with the SPCl34 series. Check fit with samples before use.
 Wide range of non stock sizes available up to 54mm OD.



Metal Clearance Spacers

RC Series Nickel-Plated Brass

Heavy-wall mechanical spacer



Length mm	M3		M4	
	ID 3.2	OD 6.0	ID 4.3	OD 8.0
2	RC6.03.02		RC8.04.02	
3	RC6.03.03		RC8.04.03	
4	RC6.03.04		RC8.04.04	
5	RC6.03.05		RC8.04.05	
6	RC6.03.06		RC8.04.06	
7	RC6.03.07		RC8.04.07	
8	RC6.03.08		RC8.04.08	
9	RC6.03.09		RC8.04.09	
10	RC6.03.10		RC8.04.10	
11	RC6.03.11		RC8.04.11	
12	RC6.03.12		RC8.04.12	
13	RC6.03.13		RC8.04.13	
14	RC6.03.14		RC8.04.14	
15	RC6.03.15		RC8.04.15	
18	RC6.03.18		RC8.04.18	
20	RC6.03.20		RC8.04.20	
22	RC6.03.22		RC8.04.22	
25	RC6.03.25		RC8.04.25	
30	RC6.03.30		RC8.04.30	

Tolerance: ± 0.1 mm

RC47 Series Chrome-Plated Brass

Thin-wall mechanical spacer

ID: 3.4 mm

OD: 4.7 mm

Part No.	Length
RC47.03.06	6
RC47.03.09	9
RC47.03.12	12
RC47.03.25	25





Spacers Self Retaining

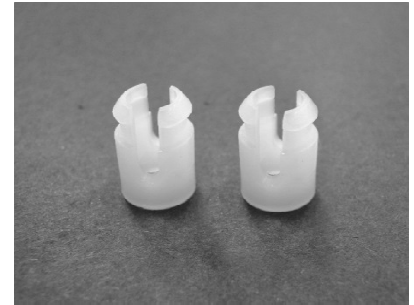
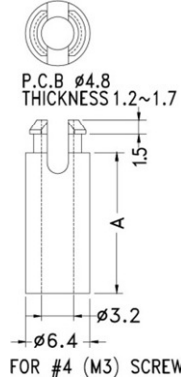
Spacers - Self Retaining in PCB or Panel

- Simply clip into PCB or panel to provide spacing support, even when screw/fastener is removed.

M3 Screw Clearance **PCB Hole 4.8mm**

Part No.	I.D. 3.3mm O.D. 6.4mm Length L mm
SPSR303	3.3
SPSR305	4.8
SPSR306	6.3
SPSR308	8.0
SPSR310	9.5
SPSR313	12.7
SPSR316	15.9

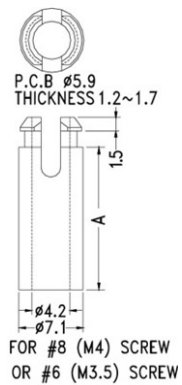
M3 Screw Clearance



M4 Screw Clearance **PCB Hole 5.9mm**

Part No.	I.D. 4.3mm O.D. 7.1mm Length L mm
SPSR409	9.5
SPSR413	12.7

Nylon 6/6 Natural



M4 Screw Clearance

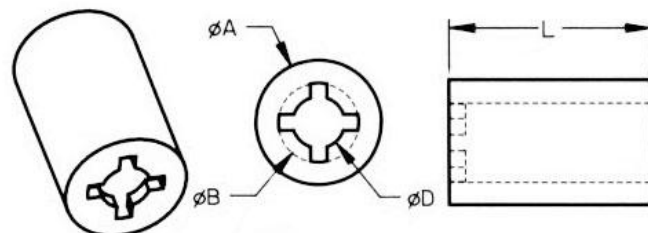
Spacers Self Retaining on Screw

- Specially configured ID designed to grip the screw thread.
- Save time –spacer remains attached to the screw for fast assembly.

Part No.	Metric Screw	Ø A mm	Ø B mm	Ø D mm
SPRT03 xx	M2.5	6.4	2.9	2.0
SPRT04 xx	M3	6.4	4.0	2.6
SPRT05 xx	M4	7.9	5.0	3.3
SPRT06 xx	M5	9.5	6.1	3.9
SPRT07 xx	M5/M6	12.7	7.0	4.5
SPRT10 xx	M8	12.7	9.5	5.9

Standard lengths: xx = 03 (3.2mm), 05 (4.8mm), 06 (6.3mm), 08 (7.9), 10 (9.5mm), 13 (12.7mm), 16 (15.9mm), 19 (19.1mm) & 25 (25.4mm)

Material: Nylon 6/6 Natural

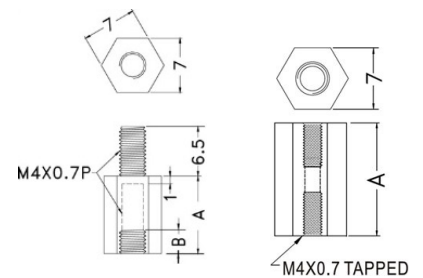
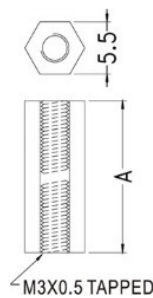
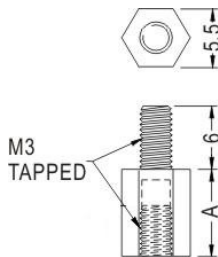
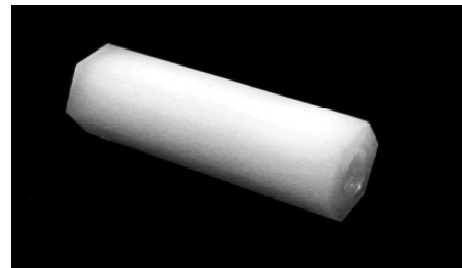
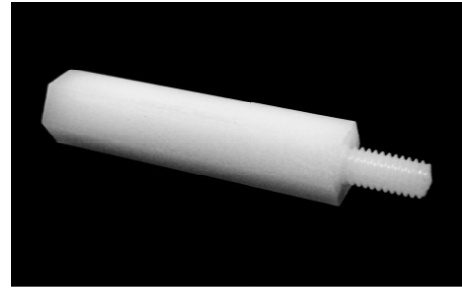




Spacers Threaded

Plastic Threaded Standoffs

- ▶ Rigid and secure means of supporting PCB
- ▶ Versatile with easy removal
- ▶ Useful for stacking PC Boards
- ▶ Metric thread
- ▶ Nylon 6/6



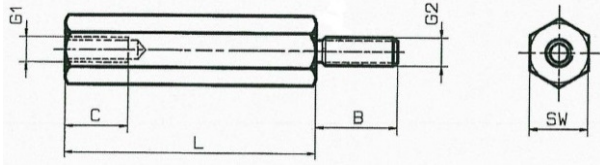
Length A mm	Male-Female M3 Part No.	Female-Female M3 Part No.
6.0	SHMF306	SHFF306
8.0	SHMF308	SHFF308
10.0	SHMF310	SHFF310
11.0	SHMF311	SHFF311
12.0	SHMF312	SHFF312
12.7	SHMF313	SHFF313
15.0	SHMF315	SHFF315
16.0	SHMF316	SHFF316
18.0	SHMF318	SHFF318
20.0	SHMF320	SHFF320
22.0	SHMF322	SHFF322
25.0	SHMF325	SHFF325
30.0	SHMF330	SHFF330

Length A mm	Male-Female M4 Part No.	Female-Female M4 Part No.
6.0	SHMF406	SHFF406
10.0	SHMF410	SHFF410
12.0	SHMF412	SHFF412
14.0	SHMF414	SHFF414
16.0	SHMF416	SHFF416
20.0	SHMF420	SHFF420
25.0	SHMF425	SHFF425

Note: Female/Female
For lengths 19mm and longer
the thread is 9.5mm from each
end and not continuous through



M2.5 Metal Threaded Standoffs

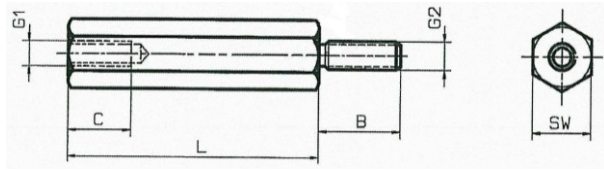


Thread Type: Male-Female
 Thread Size: M2.5
 Hex SW: 5 mm
 Material: Brass Nickel-Plate
 Tolerance: $\pm 0.1\text{mm}$
 RoHS compliant to EU2002/95/EG

Part No.	L	C	B
BM5.0256.05	5	2.5	6
BM5.0256.06	6	2.5	6
BM5.0256.07	7	3	6
BM5.0256.08	8	4	6
BM5.0256.09	9	4	6
BM5.0256.10	10	5	6
BM5.0256.11	11	6	6
BM5.0256.12	12	8	6
BM5.0256.13	13	8	6
BM5.0256.14	14	8	6
BM5.0256.15	15	8	6
BM5.0256.16	16	8	6
M5.0256.17	17	8	6
BM5.0256.18	18	8	6
BM5.0256.19	19	8	6
BM5.0256.20	20	8	6
BM5.0256.22	22	8	6
BM5.0256.23	23	8	6
BM5.0256.24	24	8	6
BM5.0256.25	25	10	6
BM5.0256.30	30	10	8
BM5.0256.35	35	10	8
BM5.0256.40	40	8	6
BM5.0256.45	45	10	8
BM5.0256.50	50	10	8



M3 Metal Threaded Standoffs



Thread Type: Male-Female
 Thread Size: M3
 Hex SW: 5 mm
 Material: Brass Nickel-Plate
 Tolerance: $\pm 0.1\text{mm}$
 RoHS compliant to EU2002/95/EG

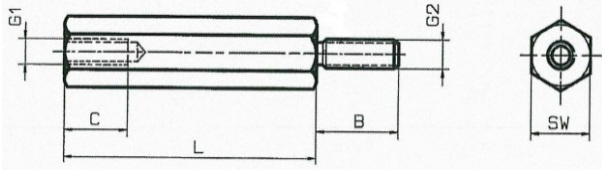
Part No	SW	L	C	B
BM5.036.05	5	5	2.5	6
BM5.036.06	5	6	3	6
BM5.0312.06	5	6	3	12
BM5.036.07	5	7	4	6
BM5.036.08	5	8	5	6
BM5.036.09	5	9	5	6
BM5.036.10	5	10	5	6
BM5.036.11	5	11	6	6
BM5.036.12	5	12	6	6
BM5.036.13	5	13	8	6
BM5.036.14	5	14	10	6
BM5.036.15	5	15	10	6
BM5.036.16	5	16	10	6
BM5.036.17	5	17	10	6
BM5.036.18	5	18	10	6
BM5.036.19	5	19	10	6
BM5.036.20	5	20	10	6
BM5.036.21	5	21	10	6
BM5.036.22	5	22	10	6
BM5.036.23	5	23	10	6

Part No	SW	L	C	B
BM5.036.24	5	24	10	6
BM5.036.25	5	25	10	6
BM5.036.26	5	26	10	6
BM5.036.27	5	27	10	6
BM5.036.28	5	28	10	6
BM5.036.29	5	29	10	6
BM5.036.30	5	30	10	6
BM5.036.31	5	31	10	6
BM5.036.32	5	32	10	6
BM5.036.33	5	33	10	6
BM5.036.34	5	34	10	6
BM5.036.35	5	35	10	6
BM5.036.36	5	36	10	6
BM5.036.37	5	37	10	6
BM5.036.38	5	38	10	6
BM5.036.39	5	39	10	6
BM5.036.40	5	40	10	6
BM5.036.42	5	42	10	6
BM5.036.45	5	45	10	6
BM5.036.50	5	50	10	6

Custom sizes available upon request



M4 Metal Threaded Standoffs



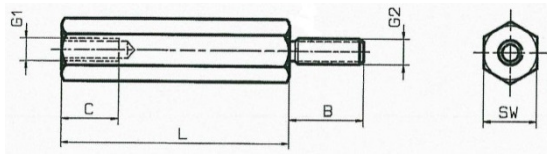
Thread Type: Male-Female
 Thread Size: M4
 Hex SW: 7 mm
 Material: Brass Nickel-Plate
 Tolerance: $\pm 0.1\text{mm}$
 RoHS compliant to EU2002/95/EG

Part No	L	C	B
BM7.048.05	5	2.5	8
BM7.048.06	6	3	8
BM7.048.07	7	3	8
BM7.048.08	8	4	8
BM7.048.09	9	5	8
BM7.048.10	10	5	8
BM7.048.11	11	6	8
BM7.048.12	12	6	8
BM7.048.13	13	7	8
BM7.048.14	14	8	8
BM7.048.15	15	8	8
BM7.048.16	16	8	8
BM7.048.17	17	8	8
BM7.048.18	18	8	8
BM7.048.19	19	8	8
BM7.048.20	20	10	8
BM7.048.21	21	10	8
BM7.048.22	22	10	8
BM7.048.23	23	10	8
BM7.048.24	24	10	8
BM7.048.25	25	10	8
BM7.048.26	26	10	8
BM7.048.27	27	10	8
BM7.048.28	28	10	8
BM7.048.29	29	10	8
BM7.048.30	30	10	8
BM7.048.31	31	10	8

Part No	L	C	B
BM7.048.32	32	10	8
BM7.048.33	33	10	8
BM7.048.34	34	10	8
BM7.048.35	35	10	8
BM7.048.36	36	10	8
BM7.048.37	37	10	8
BM7.048.38	38	10	8
BM7.048.39	39	10	8
BM7.048.40	40	10	8
BM7.048.41	41	10	8
BM7.048.42	42	10	8
BM7.048.43	43	10	8
BM7.048.44	44	10	8
BM7.048.45	45	10	8
BM7.048.46	46	10	8
BM7.048.47	47	10	8
BM7.048.48	48	10	8
BM7.048.50	50	10	8
BM7.048.55	55	10	8
BM7.048.60	60	10	8
BM7.048.65	65	10	8
BM7.048.70	70	10	8
BM7.048.75	75	10	8
BM7.048.80	80	10	8
BM7.048.85	85	10	8
BM7.048.90	90	10	8
BM7.048.100	100	10	8



M5 Metal Threaded Standoffs



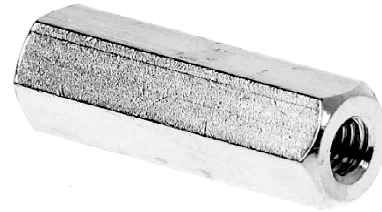
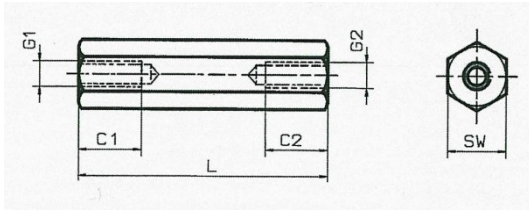
Thread Type: Male-Female
Thread Size: M5
Hex SW: 8 mm
Material: Brass Nickel-Plate
Tolerance: $\pm 0.1\text{mm}$
RoHS compliant to EU2002/95/EG

Part No	SW	L	C	B	G1-G2
BM8.0510.10	8	10	5	10	M5
BM8.0510.12	8	12	6	10	M5
BM8.0510.15	8	15	10	10	M5
BM8.0510.18	8	18	11	10	M5
BM8.0510.20	8	20	11	10	M5
BM8.0510.25	8	25	11	10	M5
BM8.0510.30	8	30	11	10	M5
BM8.0510.35	8	35	11	10	M5
BM8.0510.40	8	40	11	10	M5
BM8.0510.45	8	45	11	10	M5
BM8.0510.50	8	50	11	10	M5
BM8.0510.55	8	55	11	10	M5
BM8.0510.60	8	60	11	10	M5
BM8.0510.70	8	70	11	10	M5
BM8.0510.80	8	80	11	10	M5
BM8.0510.90	8	90	11	10	M5
BM8.0510.100	8	100	11	10	M5



Spacers Threaded

M2 & M2.5 Metal Threaded Standoffs



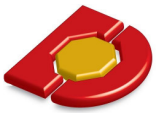
Thread Type: Female-Female
 Thread Size: M2 & M2.5
 Hex SW: 4 mm
 Material: Brass Nickel-Plate
 Tolerance: $\pm 0.1\text{mm}$
 RoHS compliant to EU2002/95/EG

M2

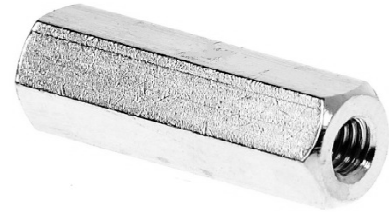
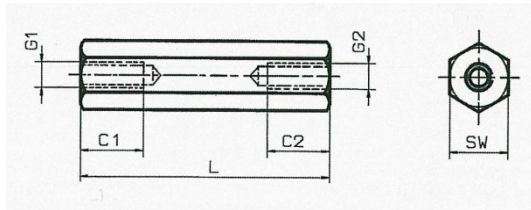
Part No	L	C1-C2	G1-G2
BF4.02.05	5	5	M2
BF4.02.08	8	8	M2
BF4.02.10	10	10	M2
BF4.02.12	12	12	M2
BF4.02.15	15	6	M2
BF4.02.18	18	6	M2
BF4.02.20	20	6	M2
BF4.02.25	25	6	M2
BF4.02.30	30	6	M2

M2.5

Part No	L	C1-C2	G1-G2
BF4.025.05	5	5	M2.5
BF4.025.06	6	6	M2.5
BF4.025.08	8	8	M2.5
BF4.025.10	10	10	M2.5
BF4.025.12	12	12	M2.5
BF4.025.13	13	13	M2.5
BF4.025.15	15	15	M2.5
BF4.025.17.5	17.5	6	M2.5
BF5.025.18	18	6	M2.5
BF4.025.20	20	6	M2.5
BF4.025.22	22	6	M2.5
BF4.025.25	25	6	M2.5
BF4.025.30	30	6	M2.5



M3 Metal Threaded Standoffs

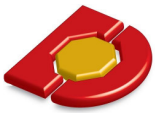


Thread Type: Female-Female
 Thread Size: M3
 Hex SW: 5 mm
 Material: Brass Nickel-Plate
 Tolerance: $\pm 0.1\text{mm}$
 RoHS compliant to EU2002/95/EG

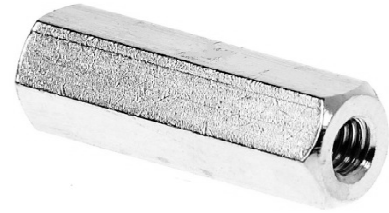
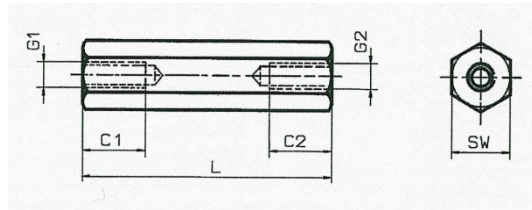
Part No	L	C1-C2	G1-G2
BF5.03.05	5	5	M3
BF5.03.06	6	6	M3
BF5.03.07	7	7	M3
BF5.03.08	8	8	M3
BF5.03.09	9	9	M3
BF5.03.10	10	10	M3
BF5.03.11	11	11	M3
BF5.03.12	12	12	M3
BF5.03.13	13	13	M3
BF5.03.14	14	14	M3
BF5.03.15	15	15	M3
BF5.03.16	16	8	M3
BF5.03.17	17	8	M3
BF5.03.18	18	8	M3
BF5.03.19	19	8	M3
BF5.03.20	20	10	M3
BF5.03.21	21	10	M3
BF5.03.22	22	10	M3
BF5.03.23	23	10	M3
BF5.03.24	24	10	M3
BF5.03.25	25	10	M3
BF5.03.26	26	10	M3
BF5.03.27	27	10	M3

Part No	L	C1-C2	G1-G2
BF5.03.28	28	10	M3
BF5.03.29	29	10	M3
BF5.03.30	30	10	M3
BF5.03.31	31	10	M3
BF5.03.32	32	10	M3
BF5.03.33	33	10	M3
BF5.03.34	34	10	M3
BF5.03.35	35	10	M3
BF5.03.36	36	10	M3
BF5.03.37	37	10	M3
BF5.03.38	38	10	M3
BF5.03.39	39	10	M3
BF5.03.40	40	10	M3
BF5.03.41	41	10	M3
BF5.03.42	42	10	M3
BF5.03.43	43	10	M3
BF5.03.44	44	10	M3
BF5.03.45	45	10	M3
BF5.03.46	46	10	M3
BF5.03.47	47	10	M3
BF5.03.48	48	10	M3
BF5.03.49	49	10	M3
BF5.03.50	50	10	M3

Custom sizes available upon request



M4 Metal Threaded Standoffs



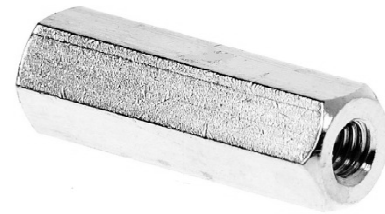
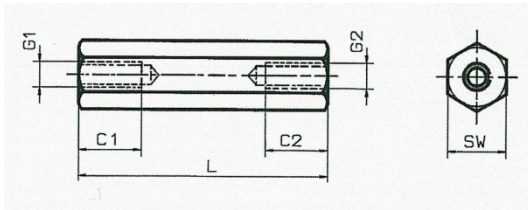
Thread Type: Female-Female
 Thread Size: M4
 Hex SW: 7 mm
 Material: Brass Nickel-Plate
 Tolerance: $\pm 0.1\text{mm}$
 RoHS compliant to EU2002/95/EG

Part No	L	C1-C2	G1-G2
BF7.04.05	5	5	M4
BF7.04.06	6	6	M4
BF7.04.07	7	7	M4
BF7.04.08	8	8	M4
BF7.04.09	9	9	M4
BF7.04.10	10	10	M4
BF7.04.11	11	11	M4
BF7.04.12	12	12	M4
BF7.04.13	13	13	M4
BF7.04.14	14	14	M4
BF7.04.15	15	15	M4
BF7.04.16	16	8	M4
BF7.04.17	17	8	M4
BF7.04.18	18	8	M4
BF7.04.19	19	8	M4
BF7.04.20	20	10	M4
BF7.04.21	21	10	M4
BF7.04.22	22	10	M4
BF7.04.23	23	10	M4
BF7.04.24	24	10	M4
BF7.04.25	25	10	M4
BF7.04.26	26	10	M4
BF7.04.27	27	10	M4
BF7.04.28	28	10	M4
BF7.04.29	29	10	M4
BF7.04.30	30	10	M4
BF7.04.31	31	10	M4
BF7.04.32	32	10	M4

Part No	L	C1-C2	G1-G2
BF7.04.33	33	10	M4
BF7.04.34	34	10	M4
BF7.04.35	35	10	M4
BF7.04.36	36	10	M4
BF7.04.37	37	10	M4
BF7.04.38	38	10	M4
BF7.04.39	39	10	M4
BF7.04.40	40	10	M4
BF7.04.41	41	10	M4
BF7.04.42	42	10	M4
BF7.04.43	43	10	M4
BF7.04.44	44	10	M4
BF7.04.45	45	10	M4
BF7.04.46	46	10	M4
BF7.04.47	47	10	M4
BF7.04.48	48	10	M4
BF7.04.49	49	10	M4
BF7.04.50	50	10	M4
BF7.04.55	55	10	M4
BF7.04.60	60	10	M4
BF7.04.65	65	10	M4
BF7.04.70	70	10	M4
BF7.04.75	75	10	M4
BF7.04.80	80	10	M4
BF7.04.85	85	10	M4
BF7.04.90	90	10	M4
BF7.04.95	95	10	M4
BF7.04.100	100	10	M4

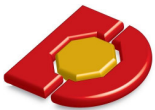


M5 Metal Threaded Standoffs



Thread Type: Female-Female
Thread Size: M5
Hex SW: 8 mm
Material: Brass Nickel-Plate
Tolerance: $\pm 0.1\text{mm}$
RoHS compliant to EU2002/95/EG

Part No	L	C1-C2	G1-G2
BF8.05.15	8	8	M5
BF8.05.10	10	10	M5
BF8.05.12	12	12	M5
BF8.05.15	15	15	M5
BF8.05.18	18	18	M5
BF8.05.20	20	20	M5
BF8.05.25	25	10	M5
BF8.05.30	30	10	M5
BF8.05.35	35	10	M5
BF8.05.40	40	10	M5
BF8.05.45	45	10	M5
BF8.05.50	50	10	M5
BF8.05.55	55	10	M5
BF8.05.60	60	10	M5
BF8.05.70	70	10	M5
BF8.05.80	80	10	M5
BF8.05.90	90	10	M5
BF8.05.100	100	10	M5



PCB Supports - Miscellaneous

PCB Supports - Screw Mount Type

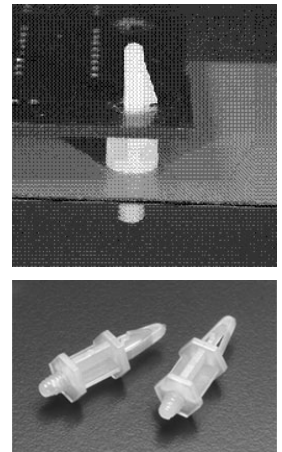
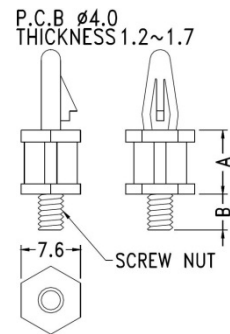
SPCM Series - Male M4 Thread

- ▶ Screws into tapped hole or fasten with nut.
- ▶ Quick release locking tab secures the PCB.

Part Number	Spacing A	Thread Length B
SPCM406	6.3	4.8
SPCM416	15.9	4.5

Nylon 6/6

Mounting Holes
 PCB 4.0mm
 Panel 4.0mm
 (M4 Screw Clear)

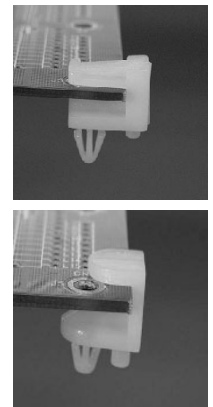
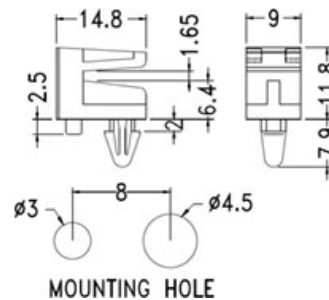


PCB Support - Slide Type

- ▶ PCB slides into support slot – no holes required on PCB.
- ▶ Locking panel clip and spigot for secure positioning.

Part Number	Spacing A 1.5mm PCB
SPST1506	6.4

Nylon 6/6



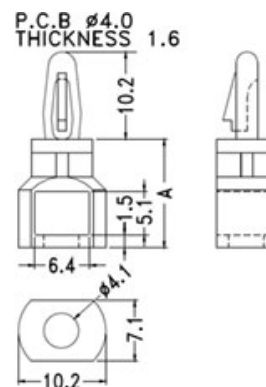
PCB Supports - Rivet Mount Type

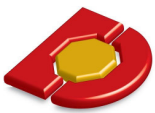
- ▶ Minimal hole-size in panel.
- ▶ Neat rivet head for outer panel appearance.
- ▶ Mount with 4mm Rivet eg RISN40060.

Part Number	Spacing A 1.5mm PCB
SPCR0410	9.5
SPCR0413	12.7
SPCR0416	15.9
SPCR0425	25.4

Nylon 6/6 – also available in black

Mounting Holes
 PCB 4.0mm
 Panel 4.0mm





PCB Supports - Screw Mount Types

SPCF Series Female Self Threading - M3 Screw

- Firm grip locking on PCB.

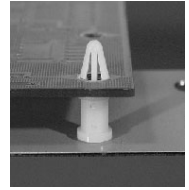
Part Number	Spacing A 1.5mm PCB
SPCF0405	5.0
SPCF0407	7.0
SPCF0410	10.0
SPCF0415	15.0
SPCF0420	20.0
SPCF0425	25.0
SPCF0435	35.0

Mounting Holes

PCB 4.0mm
Panel 3.0mm
(M3 screw clearance)



FOR M3 SELF TAPPED SCREW



SPCX Series Female Self Threading - #6 Self Tap Screw

- Firm grip locking clip for PCB end.

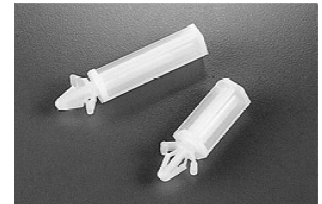
Part Number	Spacing A 1.5mm PCB
SPCX0406	6.5
SPCX0410	10.1
SPCX0413	13.2
SPCX0420	19.6
SPCX0429	29.0
SPCX0435	35.5

Mounting Holes

PCB 4.0mm
Panel 3.6mm
(clearance for #6
Self Tapper)

Screw Hole Depth

SPCX0406 4.5mm
SPCX0410 5.0mm
Others 8.0mm



SPCY Series Female Self Threading - #6 Self Tap Screw

- Quick release locking clip for PCB.

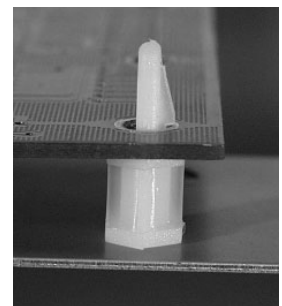
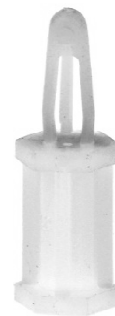
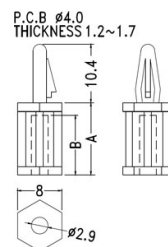
Part Number	Spacing A 1.5mm PCB
SPCY0406	6.3
SPCY0409	9.5
SPCY0413	12.7
SPCY0416	15.9
SPCY0419	19.1
SPCY0425	25.4
SPCY0432	31.8

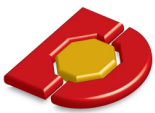
Mounting Holes

PCB 4.0mm
Panel 3.6mm
(clearance for #6
Self Tapper)

Screw Hole Depth

SPCY06 4.5mm
Others 8.0mm





PCB Supports - Standard Double Barb Types

SPDF Series

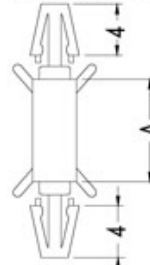
- Suitable for miniature PCB's

Part Number	Spacing A 1.5mm PCB
SPDF0306	6.3
SPDF0308	8.0
SPDF0310	10.0
SPDF0313	12.7

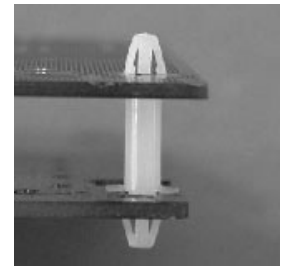
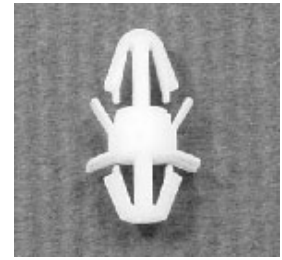
Mounting Holes
Panel & PCB 3.0mm

Panel Thickness
0.8 - 1.8mm
Nylon 6/6

P.C.B ϕ 3.0
THICKNESS 1.2~1.7



P.C.B ϕ 3.0
THICKNESS 1.2~1.7



SPDG Series

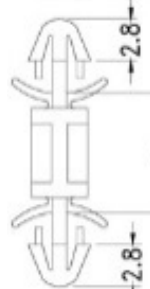
- Suitable for miniature PCB's

Part Number	Spacing A 1.5mm PCB
SPDG0303	3.2
SPDG0305	5.0
SPDG0306	6.4
SPDG0308	8.0

Mounting Holes
Panel & PCB 3.0mm

Panel or PCB Thickness
0.8 - 2.0mm
Nylon 6/6

P.C.B ϕ 3.0
THICKNESS 1.2~2.0



P.C.B ϕ 3.0
THICKNESS 1.2~2.0



SPDH Series

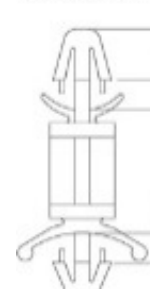
- Suitable for small PCB's

Part Number	Spacing A 1.5mm PCB
SPDH0306	6.3
SPDH0308	8.0
SPDH0310	9.6
SPDH0313	12.7

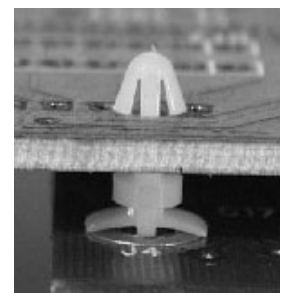
Mounting Holes
Panel & PCB 3.5mm

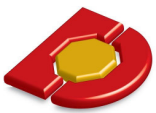
Panel Thickness
0.8 - 2.0mm
Nylon 6/6

P.C.B ϕ 3.5
THICKNESS 1.2~1.7



CHASSIS ϕ 3.5
THICKNESS 0.8~2.0





PCB Supports

SPDI Series

- ▶ Quick assembly of standard size PCB's
- ▶ Quick-release locking for easy removal of PCB.

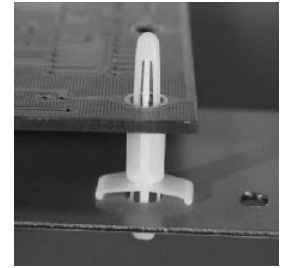
Part Number	Spacing A 1.5mm PCB
SPDI0406	6.3
SPDI0408	7.7
SPDI0411	11.1
SPDI0414	14.3
SPDI0417	17.3
SPDI0421	20.6
SPDI0426	26.0

Mounting Holes

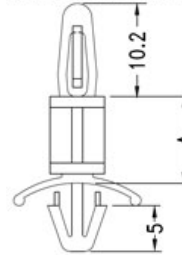
PCB 4.0mm
Panel 4.8mm

Panel Thickness

0.8 - 2.0mm
Nylon 6/6



P.C.B Ø4.0
THICKNESS 1.2~1.7



CHASSIS Ø4.8
THICKNESS:0.8~2.0



SPDJ Series

- ▶ Firm Spring grip of PCB.

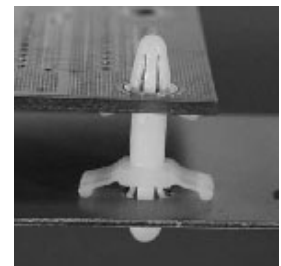
Part Number	Spacing A 1.5mm PCB
SPDJ0406	6.3
SPDJ0408	7.9
SPDJ0411	11.1
SPDJ0413	14.2
SPDJ0417	17.4
SPDJ0421	20.6
SPDJ0426	26.0
SPDJ0428	28.0

Mounting Holes

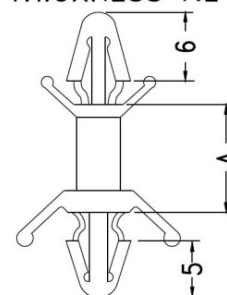
PCB 4.0mm
Panel 4.8mm

Panel Thickness

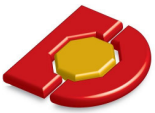
0.8 - 2.0mm
Nylon 6/6



P.C.B Ø4.0
THICKNESS 1.2~1.8

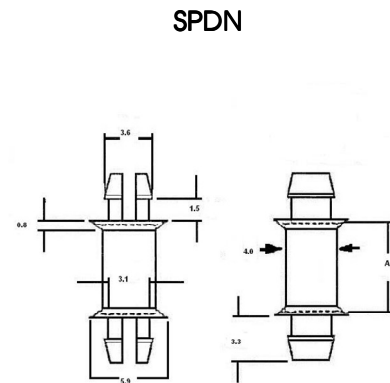
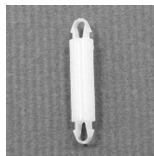
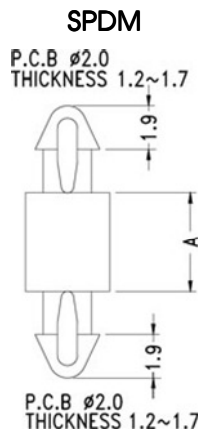
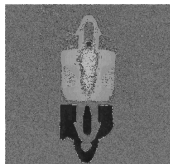
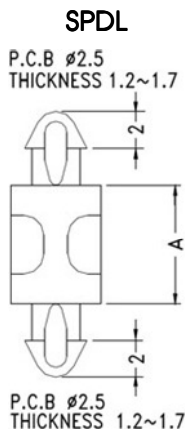
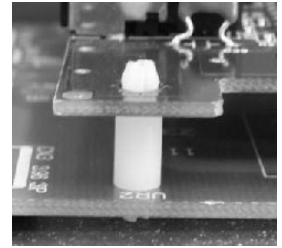


CHASSIS Ø4.8
THICKNESS 0.8~2.2



PCB Posts - Double End Types

- ▶ Ideal for small printed circuit boards or mounting on motherboards.
- ▶ Patented design for extra stability.
- ▶ Uses same size holes at each end.

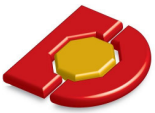


Locking Clip Both Ends

Spacing A 1.5mm PCB	Part Number 2.0mm Dia. Mounting Holes Both Ends	Part Number 2.0mm Dia. Mounting Holes Both Ends
3.0	-	SPDM2503
4.0	SPDL2004	SPDM2504
5.0	SPDL2005	SPDM2505
6.3	SPDL2006	SPDM2506
8.0	SPDL2008	SPDM2508
10.5	SPDL2010	SPDM2510

Nylon 6/6

Spacing A 1.5mm PCB	Part Number 3.2mm Dia. Mounting Holes Both Ends
3.2	SPDN3203
6.3	SPDN3206
8.0	SPDN3206
9.5	SPDN3208
12.7	SPDN3209
15.9	SPDN3216
19.1	SPDN3219
25.4	SPDN3225



PCB Support - Single End Dome Head

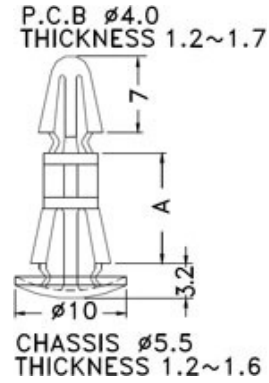
- ▶ Smooth Dome Head for outer panel applications.

SPHA Series

- ▶ Firm locking grip for PCB.

Part Number	Spacing A 1.5mm PCB
SPHA0406	6.5
SPHA0410	10.0
SPHA0412	12.0
SPHA0414	14.0

Mounting Holes
PCB 4.0mm
Panel 5.5mm



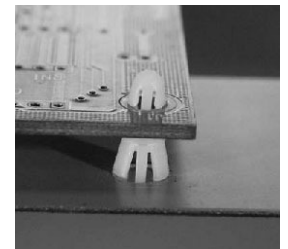
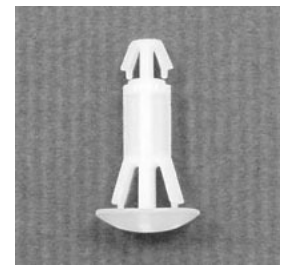
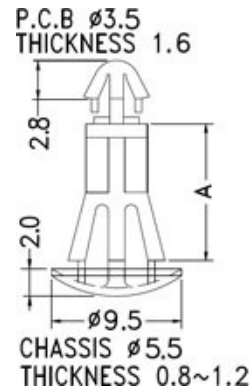
Nylon 6/6

SPHB Series - Low Profile

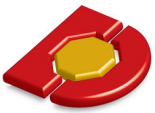
- ▶ Minimises height above PCB.
- ▶ Extra stability with thin panels.

Part Number	Spacing A 1.5mm PCB
SPHB0406	6.0
SPHB0408	8.0
SPHB0410	10.0
SPHB0412	12.0
SPHB0414	14.0

Mounting Holes
PCB 4.0mm
Panel 5.5mm



Nylon 6/6



PCB Supports - Dome

SPHC Series

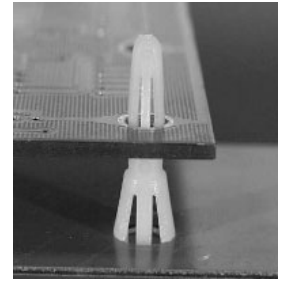
- ▶ Ideal for small PCB.
- ▶ Easy release barb for PCB.

Part Number	Spacing A 1.5mm PCB
SPHC0306	6.3
SPHC0309	9.5
SPHC0313	12.7
SPHC0316	15.9

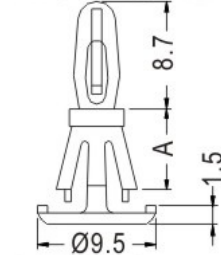
Nylon 6/6

Mounting Holes
PCB 3.2mm
Panel 4.8mm

03 & 09 lengths have hollow dome for extra stability on thin panels.



P.C.B Ø3.2
THICKNESS 1.2~1.7



P.C.B Ø4.8
THICKNESS 1.5~1.6

SPHD Series - Low Profile

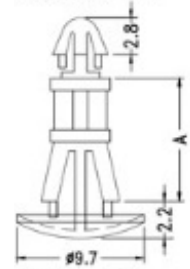
- ▶ Ideal for small PCB.
- ▶ Extra stability on thin panels.

Part Number	Spacing A 1.5mm PCB
SPHD0305	5.0
SPHD0306	6.3
SPHD0308	8.0
SPHD0310	10.0
SPHD0313	12.7

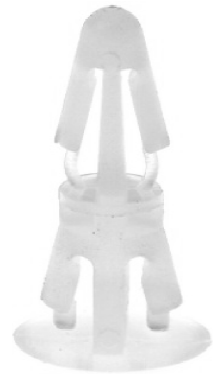
Nylon 6/6

Mounting Holes
PCB 3.2mm
Panel 4.8mm

P.C.B ø3.0
THICKNESS 1.6



CHASSIS ø4.8
THICKNESS 0.8~1.6





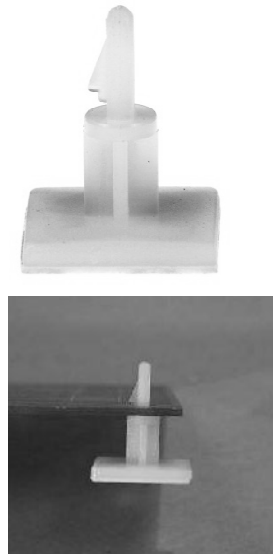
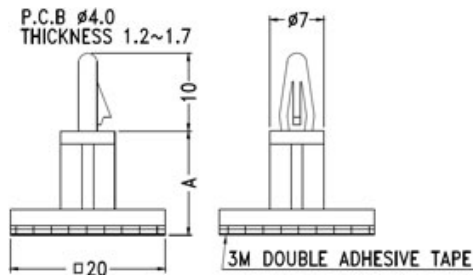
PCB Support - Adhesive Mount

- ▶ No panel holes required.

SPAB Series

PCB Hole 4.0mm

Part Number	Spacing A
SPAB0406	6.3
SPAB0409	9.5
SPAB0413	12.7
SPAB0416	15.9
SPAB0419	19.1
SPAB0425	25.4

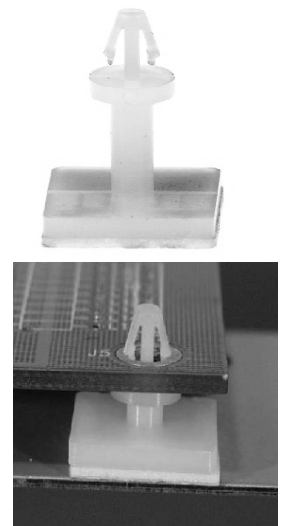
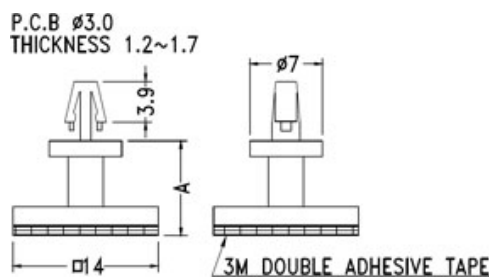


SPAA Series

PCB Hole 3.0mm

Part Number	Spacing A
SPAA0306	6.3
SPAA0309	9.0
SPAA0313	12.7

Nylon 6/6

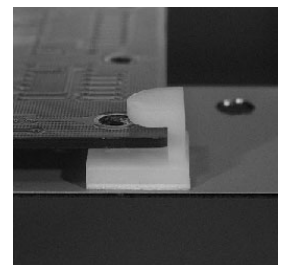
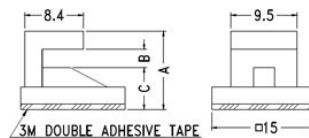


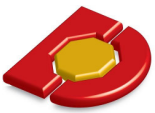
PCB Edge Support - Adhesive Mount

- ▶ For mounting PCB without holes in PCB or panel.
- ▶ Solve awkward mounting problems with PCB holes.

Part Number	A mm	B mm	C mm
SPAS2611	11.3	2.6	6.0
SPAS2413	12.8	2.4	7.9

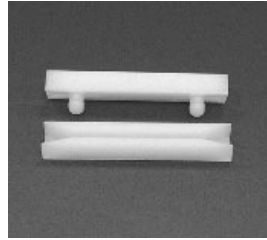
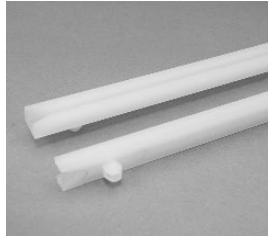
Nylon 6/6





PCB Track

- ▶ Narrow profile permits close spacing.
- ▶ Easily snap into pre-punched holes.
- ▶ Anti-static type has a stainless steel insert ground plane to make circuit contact.



Standard Nylon Snap-in PCB Track

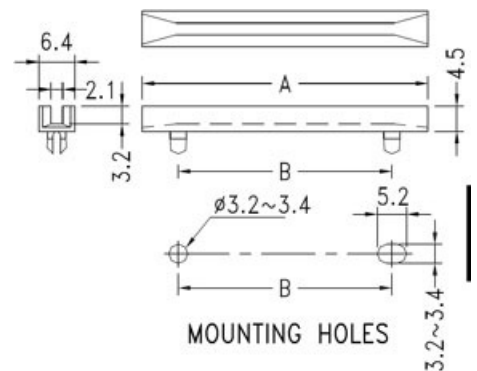
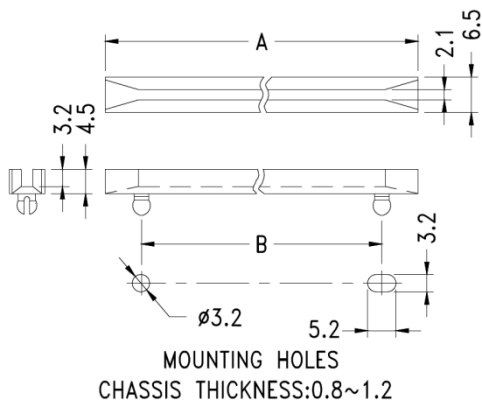
- ▶ Moulded in tough high dielectric nylon 6/6

Part Number	Length A	Hole Centres B
THSC2063	63.5	50.8
THSC2076	76.2	63.5
THSC2089	88.9	76.2
THSC2102	101.6	88.9
THSC2152	152.4	139.7

Anti Static Snap-in PCB Track

- ▶ Static Decay meets NFPA and Mil-B-81705B

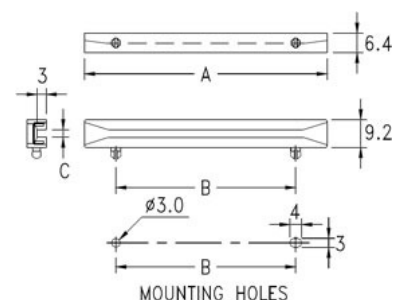
Part Number	Length A	Hole Centres B
THAC2063	63.5	51.6
THAC2076	76.2	64.5
THAC2089	88.9	77.3
THAC2102	101.6	90.2
THAC2152	152.4	141.8



PCB Side Track Horizontal Mount

- ▶ Centre line height of 4.2mm.
- ▶ Mount on side panel to save space.
- ▶ Both ends have tapered ramp entries.

Part Number Single Sided	Part Number Double Sided	Length A ±0.4	Home Centres B ±0.4
TSSC2063	TSDC2038	63.5	38.1
TSSC2076	TSDC2050	76.2	50.8
TSSC2089	TSDC2063	88.9	63.5
TSSC2102	TSDC2076	101.6	76.2
TSSC2152	TSDC2127	152.4	127.0



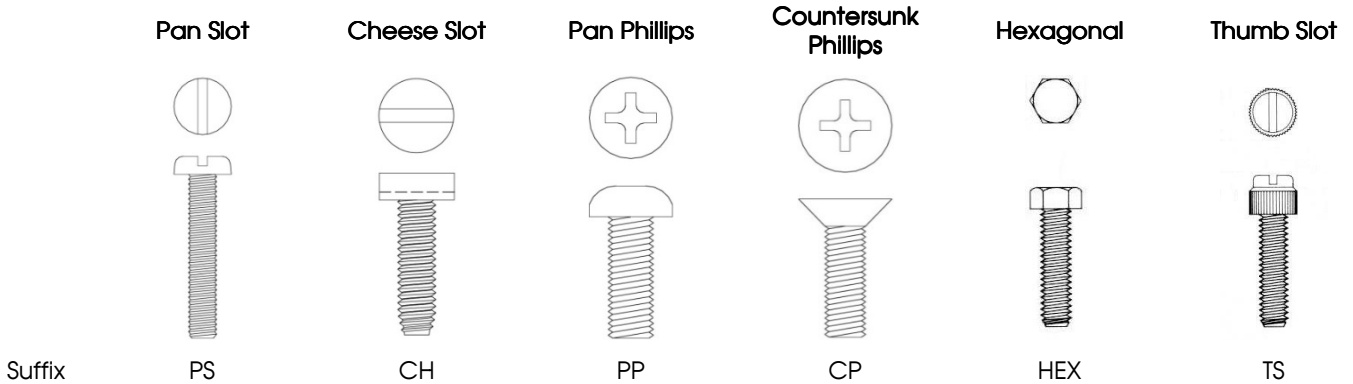
Slotting of 2nd hole is recommended to allow for length variations.
 Hole-size: 4.4mm dia. + 0.08 - 0.03 Panel Thickness: 1.2 to 2.3mm.



NYLON MACHINE SCREWS

- ▶ Duracom Nylon Screws are tough, light, durable and corrosion resistant in normal temperatures.
- ▶ Choose the screw size, head shape and lengths from the stock table below.

Head Shapes:



Part Numbers



Pan Slot

Part No	Head Shape	Thread Size	Length mm
NSSM0204	Pan Slot	M2	4
NSSM0205	Pan Slot	M2	5
NSSM0210	Pan Slot	M2	10
NSSM0225	Pan Slot	M2	25
NSSM02504	Pan Slot	M2.5	4
NSSM02506	Pan Slot	M2.5	6
NSSM02510	Pan Slot	M2.5	10
NSSM02512	Pan Slot	M2.5	12
NSSM02520	Pan Slot	M2.5	20
NSSM0305	Pan Slot	M3	5
NSSM0306	Pan Slot	M3	6
NSSM0310	Pan Slot	M3	10
NSSM0316	Pan Slot	M3	16
NSSM0320	Pan Slot	M3	20
NSSM0325	Pan Slot	M3	25
NSSM0330	Pan Slot	M3	30
NSSM0335	Pan Slot	M3	35
NSSM0406	Pan Slot	M4	6
NSSM0408	Pan Slot	M4	8
NSSM0410	Pan Slot	M4	10
NSSM0412	Pan Slot	M4	12
NSSM0416	Pan Slot	M4	16
NSSM0420	Pan Slot	M4	20

Part No	Head Shape	Thread Size	Length mm
NSSM0425	Pan Slot	M4	25
NSSM0435	Pan Slot	M4	35
NSSM0440	Pan Slot	M4	40
NSSM0510	Pan Slot	M5	10
NSSM0512	Pan Slot	M5	12
NSSM0516	Pan Slot	M5	16
NSSM0525	Pan Slot	M5	25
NSSM0540	Pan Slot	M5	40
NSSM0612	Pan Slot	M6	12
NSSM0616	Pan Slot	M6	16
NSSM0620	Pan Slot	M6	20
NSSM0630	Pan Slot	M6	30
NSSM0640	Pan Slot	M6	40
NSSM0650	Pan Slot	M6	50
NSSM0675	Pan Slot	M6	75
NSSM0816	Pan Slot	M8	16
NSSM0820	Pan Slot	M8	20
NSSM0830	Pan Slot	M8	30
NSSM0850	Pan Slot	M8	50
NSSM1013	Pan Slot	M10	13
NSSM1030	Pan Slot	M10	30
NSSM1050	Pan Slot	M10	50



NYLON MACHINE SCREWS

Cheese Slot

Part No	Head Shape	Thread Size	Length mm
NSCM0212	Cheese Slot	M2	12
NSCM0220	Cheese Slot	M2	20
NSCM02512	Cheese Slot	M2.5	12
NSCM02520	Cheese Slot	M2.5	20
NSCM0308	Cheese Slot	M3	8
NSCM0312	Cheese Slot	M3	12
NSCM0320	Cheese Slot	M3	20
NSCM0408	Cheese Slot	M4	8
NSCM0412	Cheese Slot	M4	12
NSCM0420	Cheese Slot	M4	20

Part No	Head Shape	Thread Size	Length mm
NSCM0425	Cheese Slot	M4	25
NSCM0510	Cheese Slot	M5	10
NSCM0525	Cheese Slot	M5	25
NSCM0610	Cheese Slot	M6	10
NSCM0625	Cheese Slot	M6	25
NSCM0816	Cheese Slot	M8	16
NSCM0825	Cheese Slot	M8	25
NSCM0835	Cheese Slot	M8	35
NSCM1020	Cheese Slot	M10	20
NSCM1035	Cheese Slot	M10	35

Pan Phillips

Part No	Head Shape	Thread Size	Length mm
NSPM02506	Pan Phillips	M2.5	6
NSPM02508	Pan Phillips	M2.5	8
NSPM02512	Pan Phillips	M2.5	12
NSPM02516	Pan Phillips	M2.5	16
NSPM02520	Pan Phillips	M2.5	20
NSPM0305	Pan Phillips	M3	5
NSPM0306	Pan Phillips	M3	6
NSPM0310	Pan Phillips	M3	10
NSPM0312	Pan Phillips	M3	12
NSPM0316	Pan Phillips	M3	16
NSPM0320	Pan Phillips	M3	20
NSPM0325	Pan Phillips	M3	25
NSPM0335	Pan Phillips	M3	35

Part No	Head Shape	Thread Size	Length mm
NSPM0408	Pan Phillips	M4	8
NSPM0412	Pan Phillips	M4	12
NSPM0416	Pan Phillips	M4	16
NSPM0420	Pan Phillips	M4	20
NSPM0425	Pan Phillips	M4	25
NSPM0510	Pan Phillips	M5	10
NSPM0525	Pan Phillips	M5	25
NSPM0610	Pan Phillips	M6	10
NSPM0612	Pan Phillips	M6	12
NSPM0620	Pan Phillips	M6	20
NSPM0630	Pan Phillips	M6	30
NSPM0640	Pan Phillips	M6	40
NSPM0650	Pan Phillips	M8	50

Pan Phillips

Part No	Head Shape	Thread Size	Length mm
NSXM0205	Count Phillips	M2	5
NSXM0210	Count Phillips	M2	10
NSXM0220	Count Phillips	M2	20
NSXM02506	Count Phillips	M2.5	6
NSXM02512	Count Phillips	M2.5	12
NSXM02520	Count Phillips	M2.5	20
NSXM0306	Count Phillips	M3	6
NSXM0308	Count Phillips	M3	8
NSXM0310	Count Phillips	M3	10
NSXM0316	Count Phillips	M3	16
NSXM0320	Count Phillips	M3	20
NSXM0325	Count Phillips	M3	25
NSXM0330	Count Phillips	M3	30
NSXM0408	Count Phillips	M4	8
NSXM0410	Count Phillips	M4	10
NSXM0416	Count Phillips	M4	16

Part No	Head Shape	Thread Size	Length mm
NSXM0420	Count Phillips	M4	20
NSXM0425	Count Phillips	M4	25
NSXM0435	Count Phillips	M4	35
NSXM0510	Count Phillips	M5	10
NSXM0512	Count Phillips	M5	12
NSXM0516	Count Phillips	M5	16
NSXM0525	Count Phillips	M5	25
NSXM0530	Count Phillips	M5	30
NSXM0612	Count Phillips	M6	12
NSXM0620	Count Phillips	M6	20
NSXM0625	Count Phillips	M6	25
NSXM0635	Count Phillips	M6	35
NSXM0816	Count Phillips	M8	16
NSXM0830	Count Phillips	M8	30
NSXM1020	Count Phillips	M10	20
NSXM1030	Count Phillips	M10	30



MISCELLANEOUS NUTS & SCREWS

Hexagonal

Part No	Head Shape	Thread Size	Length mm
NSHM0510	Hex	M5	10
NSHM0610	Hex	M6	10
NSHM0620	Hex	M6	20
NSHM0625	Hex	M6	25
NSHM0630	Hex	M6	30
NSHM0675	Hex	M6	75
NSHM0816	Hex	M8	16
NSHM0830	Hex	M8	30

Part No	Head Shape	Thread Size	Length mm
NSHM0850	Hex	M8	50
NSHM1030	Hex	M10	30
NSHM1035	Hex	M10	35
NSHM1050	Hex	M10	50
NSHM1060	Hex	M10	60
NSHM1240	Hex	M12	40
NSHM1270	Hex	M12	70

Thumb Slot

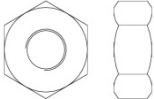
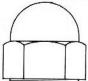
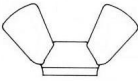

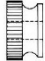
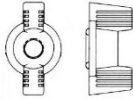
Part No	Head Shape	Thread Size	Length mm
NSTM0306	Thumb	M3	6
NSTM0406	Thumb	M4	6
NSTM0410	Thumb	M4	10
NSTM0512	Thumb	M5	12

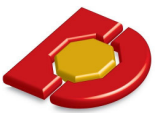
Part No	Head Shape	Thread Size	Length mm
NSTM0610	Thumb	M6	10
NSTM0625	Thumb	M6	25
NSTM0645	Thumb	M6	45

Nylon Nuts

► Nylon 6/6 is tough, durable and corrosion resistant in normal temperatures.



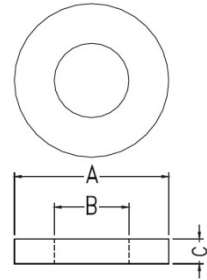
Screw Size	Part No. Hex	Part No. Cap	Part No. Wing	Part No. Thumb	Part No. Deco Wing	Part No. Lock
						
M2	NNHM0200					
M2.5	NNHM2500					
M3	NNHM0300				NNDM0300	
M4	NNHM0400	NNCM0400	NNWM0400	NNTM0400	NNDM0400	
M5	NNHM0500	NNCM0500	NNWM0500		NNDM0500	
M6	NNHM0600	NNCM0600	NNWM0600		NNDM0600	NNLM0600
M8	NNHM0800	NNCM0800	NNWM0800			
M10	NNHM1000	NNCM1000	NNWM1000			
M12	NNHM1200	NNCM1200	NNWM1200			
UNC 4-40	NNHU4400					
UNC 6-32	NNHU632	NNCU6320	NNWU6320	NNTU6320		NNLU6320
UNC 8-32	PNN832H					
UNC 1/4-20	X025HN	X025CN	X025WN	X025TN		
UNC 1/2-13	X050HN	X050CN	X050WN			



Flat Washers

► Tough, durable and chemical resistant.

Part Number	Screw Size	Inside Diameter B	Outside Diameter A	Thickness C
WAFM025008	M2	2.2	5.0	0.8
WAFM02.55608	M2.5	2.7	5.6	0.8
WAFM036308	M3	2.9	6.3	0.8
WAFM036316		2.9	6.3	1.6
WAFM036324		2.9	6.3	2.4
WAFM037105		3.1	7.1	0.5
WAFM038008		3.2	8.0	0.8
WAFM038016		3.2	8.0	1.6
WAFI048008	#6 UNC	3.6	8.0	0.8
WAFI048016		3.6	8.0	1.6
WAFI048024		3.6	8.0	2.4
WAFM048108	M4	4.0	8.1	0.8
WAFM049008		4.3	9.0	0.8
WAFM049016		4.3	9.0	1.6
WAFM059508	M5	4.9	9.5	0.8
WAFM059516		4.9	9.5	1.6
WAFM0511010		5.3	11.0	1.0
WAFM0511016		5.1	11.0	1.6
WAFM0514316		5.2	14.3	1.6
WAFM0519024		5.5	19.0	2.4
WAFM0612015	M6	6.4	12.0	1.5
WAFM0611804		6.4	11.8	0.4
WAFM0615815		6.4	15.8	1.5
WAFM0622016		6.5	22.0	1.6
WAFM0812708	M8	8.1	12.7	0.8
WAFM0815908		8.0	15.9	0.8
WAFM0818020		8.4	18.0	2.0
WAFM0819116		8.1	19.1	1.6
WAFM0822216		8.0	22.2	1.6
WAFM0824917		8.7	24.9	1.7
WAFM1017530	M10	10.0	17.5	3.0
WAFM1020517		10.2	20.5	1.7
WAFM1022025		10.5	22.0	2.5
WAFM1032416		10.2	32.4	1.6
WAFM1222919	M12	12.7	22.9	1.9
WAFM30120		12.1	30.1	2.0
WAFI1319116	1/2"	12.8	19.1	1.6
WAFI1319124		12.8	19.1	2.4
WAFI1325420		13.2	25.4	2.0
WAFI1331816		13.1	31.8	1.6
WAFM25416	M16	16.0	25.4	1.6
WAFM31125		16.3	31.1	2.5
WAFM38124		16.9	38.1	2.4
WAFM2031815	M20	20.5	31.8	1.5
WAFM37916		20.6	37.9	1.6
WAFI2647031	1"	26.1	47.0	3.1



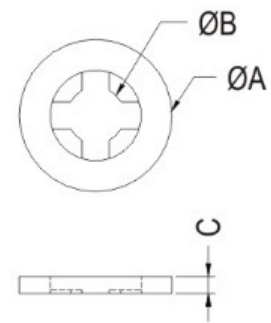
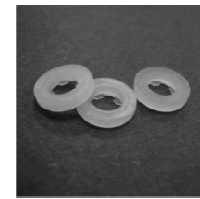
Wide range of other non stock sizes available on short deliveries.



Self Retaining Flat Washers

- Specially configured ID grips screw shank.
- Facilitate pre-assembly and reduce cost.

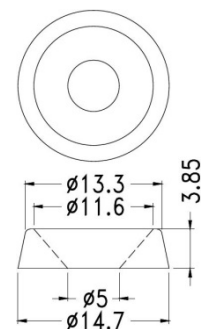
Part No.	Screw Size	I.D. D	O.D. A	Thick. T
WASR0308	M2.5	2.0	5.2	0.8
WASR0316				1.6
WASR0408	M3	2.6	6.8	0.8
WASR0416				1.6
WASR0432				3.2
WASR0508	M4	3.3	8.3	0.8
WASR0516				1.6
WASR0608	M4/M5	3.9	9.9	0.8
WASR0616				1.6
WASR0708	M5/M6	4.5	11.5	0.8
WASR0716				1.6
WASR0908	M8	6.0	15.1	0.8
WASR0916				1.6
WASR1208	M8/M10	7.4	18.7	0.8
WASR1216				1.6
WASR1408	M10/M12	8.9	22.6	0.8
WASR1416				1.6



Finishing Washers

- Cover misaligned holes.
- Protect Paintwork.

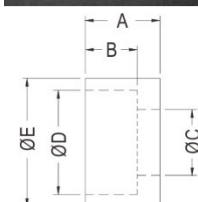
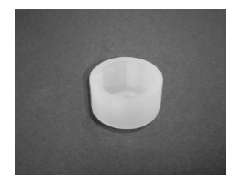
Part No.	Screw Size	I.D. B	O.D. A	Thick. C
WAFM0325	M3 / #6	3.6	11.1	2.5
WAFM0429	M4 / #8	4.3	13.1	2.9
WAFM0539	M5 / #10	4.9	14.7	3.9
WAFM0641	M6 / #12	5.7	15.5	4.1
WAFM0647	M6 / ¼"	6.6	17.4	4.7

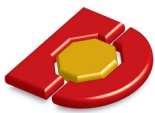


Cup Washers

- Protect paintwork and add finish.

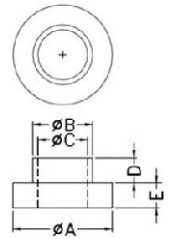
Part No.	Screw Size	A	B	C	D	E
WACM0330	M3 / #4	7.8	6.2	2.9	3.0	4.0
WACM0336	M3 / #6	9.1	7.6	3.6	3.6	4.6
WACM0442	M4 / #8	10.5	9.0	4.3	4.2	5.2
WACM0548	M5 / #10	11.9	10.4	4.9	4.8	5.9
WACM0663	M6 / ¼"	15.1	13.6	6.5	6.3	7.3





Insulating Washers

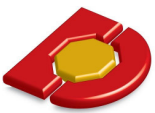
- ▶ Tough, durable and chemical resistant.
- ▶ Isolate metal screws and reduce corrosion.
- ▶ Insulate mounting screws for power transistors.
- ▶ Protect glass as buffer for metal screws.



Part Number	Material	Screw Size	Sleeve			Shoulder			
			I.D. D	O.D. C	Length L	O.D. A	Thickness B		
WINM2516	Nylon	M2.5	2.4	3.1	1.6	5.0	0.8		
WINM0308	Nylon	M3 TO-220	2.92	3.42	0.8	5.5	1.2		
WINM0314			2.95	3.53	1.4	6.1	0.5		
WINM0320			3.05	3.45	2.0	6.4	1.2		
WINM0332			3.00	3.53	3.2	6.4	1.2		
WINM0312			Nylon	M3 Because of small tolerances an M3 Screw can be a tight fit at times	2.92	3.68	1.2	6.0	1.2
WINM0316	3.68	1.6				6.0	1.2		
WINM0324	3.68	2.4				6.0	1.2		
WINM0332	3.68	3.2				6.0	1.2		
WINM0340	3.68	4.0				6.0	1.2		
WINM0348	3.68	4.8				6.0	1.2		
WINM0363	3.68	6.3				6.0	1.2		
WIBM0320	PBT	M3 TO-220				3.0	3.5	2.0	6.0
WIBM0325			2.9	2.5	6.2	2.0			
WIBM0330			3.0	3.0	6.2	1.5			
WIPM0332	PPS	M3 TO-220	2.84	3.56	3.18	7.1	1.07		
WIPM0308			2.95	3.43	0.81	5.5	1.02		
WIPM0307			3.00	3.68	0.79	7.1	1.19		
SWS0440	Nylon	1/8"	3.3	3.9	7.9	7.9	0.8		
WINM0416	Nylon	M4	4.1	4.9	1.6	7.6	1.2		
WINM0432			4.4		3.2			8.7	1.6
WINM0464			4.4		6.4			8.7	1.6
WINM0516	Nylon	M5	5.1	6.6	1.6	10.1	1.6		
WINM0536					3.6				
WINM0548					4.8				
WINM0563					6.3				
WINM0595					9.5				
WINM0632	Nylon	M6	6.6	7.9	3.2	13.0	1.6		
WINM0648					4.8				
WINM0695					9.5				
WINM0832	Nylon	M8	8.1	9.1	3.2	15.7	1.6		
WINM0864					6.4				
WINM1064	Nylon	M10	9.7	14.1	6.4	24.9	3.2		
WINM10135					10.3			13.5	24.0
WINM12103	Nylon	M12	12.0	13.4	10.3	31.8	1.6		
WINM14103								13.7	15.2

Max Service Temperatures: Nylon 6/6 Natural (UL94V2) 80°C
PBT Polybutylene Terephthalate (UL94VO) 130°C
PPS Polyphenylene Sulfide (UL94VO) 260°C

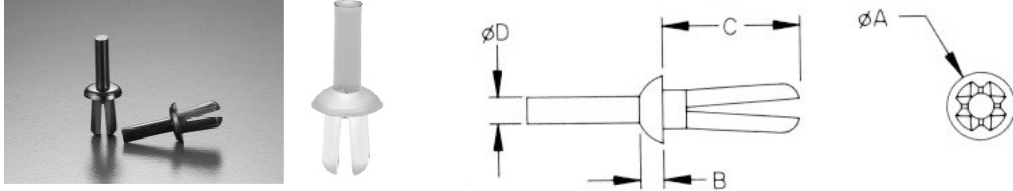
Other sizes available on short delivery times.



Nylon Rivets

Rivets - Post Type

- ▶ The self expanding principle assures firm grip even under constant vibration
- ▶ Permits application from one side only for blind applications
- ▶ Tools to use range from small hammer or hand tools (TRT1/TRT2) to custom made pneumatic tools

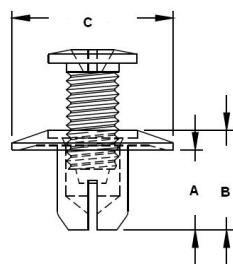


Part Number	Nominal Hole Dia.	Panel Thickness	A	H	D	E	Colour
PIPO3248N	3.2	0.8-3.6	4.8	1.2	4.8	1.9	Natural
PIPO4079N	4.0	4.8-6.4	5.5	1.3	7.9	2.4	Natural
PIPO4158N	4.1	1.6-4.6	7.5	1.3	5.8	2.4	Natural
PIPO4875N	4.8	1.6-4.8	7.1	1.9	7.5	3.2	Natural
PIPO4811.4N	4.8	2.0-9.5	7.1	1.2	11.4	3.2	Natural
PIPO4813.6N	4.8	7.9-11.2	7.1	1.9	13.6	3.2	Natural
PIPO6412.7N	6.4	2.4-7.9	11.9	2.0	12.7	3.8	Natural
PIPO6876N	6.8	2.4-4.8	15.8	2.8	7.6	3.8	Natural

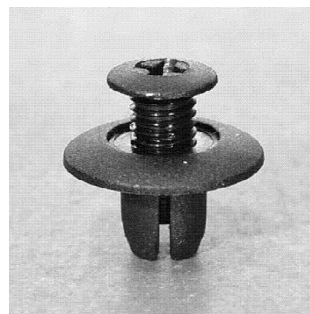
Other non stock sizes available on short delivery - Black also available in all sizes

Screw Rivet

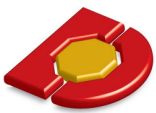
- ▶ 2 piece combination screw and rivet
- ▶ Push screw to snap tight - unscrew to loosen



CHASSIS $\varnothing 8$



Part Number	Hole Dia. mm	Panel Thickness mm	Length A	Head Height D	Head Dia. C
RISC1511	6.1-6.4	3.2-6.4	10.7	3.0	15.1
RISC1411	6.9-7.2	1.6-3.2	11.1	3.0	14.2
RISC1809	8.0-8.2	2.5-5.0	9.0	3.0	18.2

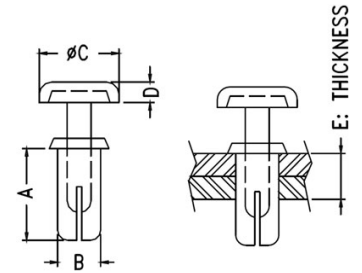


Nylon Snap Rivets

Snap Rivets - Pan Head

- ▶ Ready assembled 2 part rivet
- ▶ Fast economical assembly to lock panels in place
- ▶ Permits application from one side for blind applications

Part Number	Shaft Dia.	Panel Thickness	Length L	Head Dia. A	Head Height H
RISN26042	2.6	2.0-3.0	4.2	5.0	1.4
RISN26048	2.6	2.5-3.4	4.8	5.0	1.4
RISN26055	2.6	3.0-4.3	5.5	5.0	1.4
RISN30035	3.0	1.3-2.5	3.5	6.3	1.5
RISN30055	3.0	3.0-4.0	5.5	6.3	1.5
RISN30065	3.0	4.0-5.0	6.5	6.2	1.6
RISN30075	3.0	5.0-6.0	7.5	6.2	1.6
RISN30100	3.0	7.5-8.5	10.0	6.2	1.6
RISN30132	3.0	10.2-11.2	13.2	6.3	1.5
RISN40050	4.0	2.5-3.5	5.0	8.0	1.8
RISN39059	3.9	1.2-4.5	5.9	8.0	1.8
RISN40060	4.0	3.5-4.5	6.0	8.0	1.8
RISN40080	4.0	2.5-6.4	8.0	7.0	1.8
RISN40100	4.0	7.5-8.5	10.0	8.0	2.0
RISN40120	4.0	9.5-10.5	12.0	8.0	2.0
RISN40250	4.0	19.0-20.5	25.0	8.0	2.0
RISN50045	5.0	1.5-2.5	4.5	8.8	2.2
RISN50055	5.0	2.5-3.5	5.5	8.8	2.2
RISN50065	5.0	3.5-4.5	6.5	8.8	2.2
RISN50070	5.0	4.0-5.0	7.0	9.0	1.5
RISN50094	5.0	5.8-7.6	9.4	9.0	1.5
RISN60060	6.0	3.0-4.0	6.0	8.8	2.2

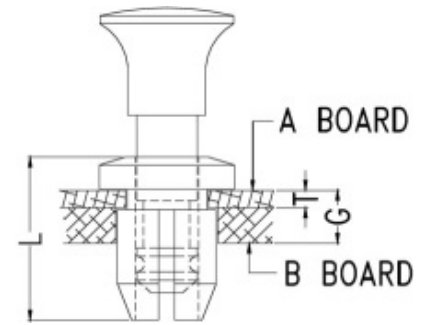
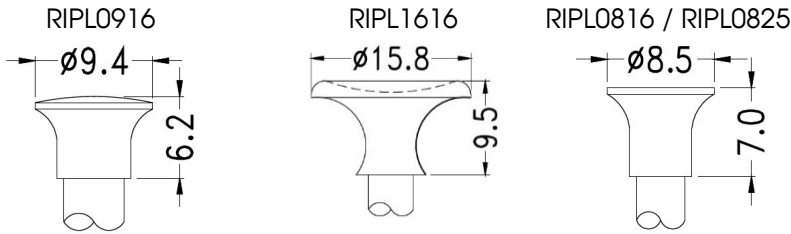




Miscellaneous Rivets & Fittings

Panel Latch

- ▶ Ideal for inspection panels or door latches.
- ▶ Fast economical assembly to lock panel in place. Supplied in two parts, the pin is fitted to the grommet through a hole in the opening panel, then the grommet is inserted into the hole in the fixed panel.
- ▶ A simple push pull is all that is required to close or open the panel.



Part Number	Hole Diameter		Grommet Length L	Knob Diameter	Knob Style	A Panel Thickness A	Overall Thickness A
	A Panel Dia.	B Panel Thickness					
RIPL0916	7.6-7.8	8.0-8.2	11.2	9.4	DL-1	1.6	2.0-4.2
RIPL1616	7.6-7.8	8.0-8.2	11.2	16.0	DL-2	1.6	2.0-4.2
RIPL0816	5.9-6.1	6.3-6.5	10.3	8.3	DL-3	1.6	2.0-4.2
RIPL0825	5.9-6.1	6.3-6.5	11.3	8.3	DL-4	2.5	3.0-6.5

Nylon 6/6 Black

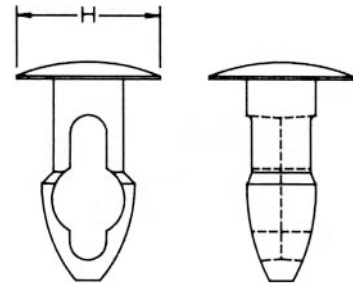




Keyhole Clips

- ▶ Multi-purpose fastener clip
- ▶ Easy assembly with finger pressure
- ▶ Angled panel lock section takes up slack in panels

Part Number	Head Dia. H	Hole Size	Panel Thickness
RIKH32024	6.3	3.2	2.4
RIKH32032	6.3	3.2	3.2
RIKH32040	6.3	3.2	4.0
RIKH40024	8.0	4.0	2.4
RIKH40032	8.0	4.0	3.2
RIKH40040	8.0	4.0	4.0
RIKH40048	8.0	4.0	4.8
RIKH48024	8.0	4.8	2.4
RIKH48032	8.0	4.8	3.2
RIKH48040	8.0	4.8	4.0
RIKH48048	8.0	4.8	4.8
RIKH48056	8.0	4.8	5.6
RIKH48063	8.0	4.8	6.3
RIKH48080	8.0	4.8	8.0
RIKH48095	8.0	4.8	9.5
RIKH63024	12.7	6.3	2.4
RIKH63032	12.7	6.3	3.2
RIKH63040	12.7	6.3	4.0
RIKH63048	12.7	6.3	4.8
RIKH63063	12.7	6.3	6.3
RIKH63071	12.7	6.3	7.1
RIKH63080	12.7	6.3	8.0
RIKH63095	12.7	6.3	9.5
RIKH63127	12.7	6.3	12.7



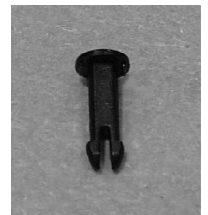
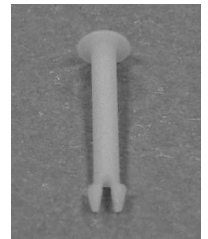
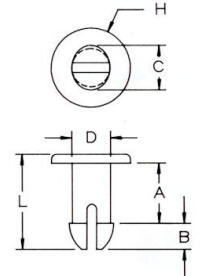


Push In Fastener

- ▶ A fast, convenient method to join insulating materials, light sheet metal, circuit boards or other light material.
- ▶ Special designed legs provide compression and expansion to lock fastener into pre-punched holes.

Part Number	Colour	Nominal Hole	H	A	B	C	D	L
RIFB2517	BLACK	2.5	4.8	1.7	1.9	2.7	2.3	4.6
RIFN2517	NATURAL	2.5	4.8	1.7	1.9	2.7	2.3	4.6
RIFB3031	BLACK	3.0	5.2	3.1	3.2	3.7	2.9	7.2
RIFN3031	NATURAL	3.0	5.2	3.1	3.2	3.7	2.9	7.2
RIFB3040	BLACK	3.0	5.2	4.0	3.4	3.6	2.9	8.3
RIFN3040	NATURAL	3.0	5.2	4.0	3.4	3.6	2.9	8.3
RIFB3064	BLACK	3.0	5.2	6.4	3.4	3.7	2.9	10.0
RIFN3064	NATURAL	3.0	5.2	6.4	3.4	3.7	2.9	10.0
RIFB4332	BLACK	4.3	8.7	3.2	3.5	5.1	4.2	7.5
RIFN4332	NATURAL	4.3	8.7	3.2	3.5	5.1	4.2	7.5
RIFB4864	BLACK	4.8	8.7	6.4	4.4	5.7	4.5	12.5
RIFN4864	NATURAL	4.8	8.7	6.4	4.4	5.7	4.5	12.5
RIFB6570	BLACK	6.5	11.5	7.0	4.8	7.5	6.1	12.8
RIFN6570	NATURAL	6.5	11.5	7.0	4.8	7.5	6.1	12.8

Nylon - Other non stock sizes available

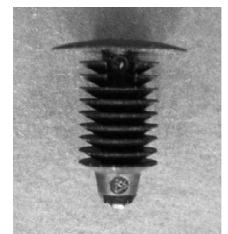
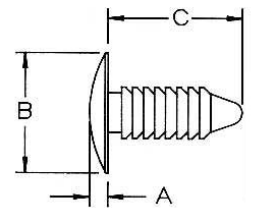


Barbed Clip

- ▶ An economical fastener which caters for a wide range of panel thickness and materials.

Part Number	Hole Size	Panel Thickness	Head Dia. B	Head Height A	Length C
RIBP48093	4.8	0.6-9.3	9.5	1.8	12.7
RIBP48084	4.8	0.8-8.4	11.1 **	1.7	14.3
RIBP48152	4.8	2.5-15.2	11.7	1.0	17.5
RIBP48114 *	4.8	3.2-11.4	7.2	1.7	17.8
RIBP64076	6.4	2.7-7.6	17.8	2.5	11.1
RIBP64135	6.4	3.8-13.5	17.8	2.7	18.9
RIBP71127	7.1	2.4-12.7	15.9	2.8	22.6

Material: Black Nylon 6/6 except for * RIBP48114 which is black polypropylene

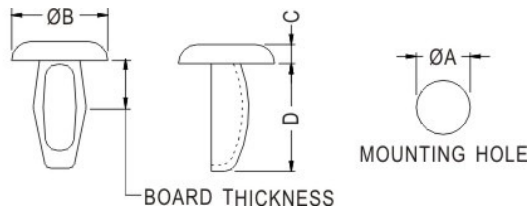




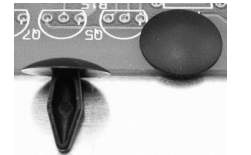
Panel Clips

Snap Clips

- ▶ A combination of tough acetal and a resilient design give these clips a positive snap and more definite grip when assembled.



Part Number	Hole Size	Panel Thickness	Head Dia. D	Length B	Head Height A
RISA3208	3.2	0.8	6.3	6.3	1.5
RISA3216	3.2	1.6	6.3	7.1	1.5
RISA3224	3.2	2.4	6.3	7.9	1.5
RISA3232	3.2	3.2	6.3	8.7	1.5
RISA4008	4.0	0.8	8.0	7.1	1.5
RISA4016	4.0	1.6	8.0	7.9	1.5
RISA4024	4.0	2.4	8.0	8.7	1.5
RISA4032	4.0	3.2	8.0	9.5	1.5
RISA4040	4.0	4.0	8.0	10.3	1.5
RISA4808	4.8	0.8	8.0	7.9	1.5
RISA4816	4.8	1.6	8.0	8.7	1.5
RISA4824	4.8	2.4	8.0	9.5	1.5
RISA4832	4.8	3.2	8.0	10.3	1.5
RISA4840	4.8	4.0	8.0	11.1	1.5
RISA6316	6.3	1.6	12.7	10.7	1.5
RISA6324	6.3	2.4	12.7	11.5	1.5
RISA6332	6.3	3.2	12.7	12.3	1.5
RISA6340	6.3	4.0	12.7	13.1	1.5
RISA6348	6.3	4.8	12.7	13.9	1.5



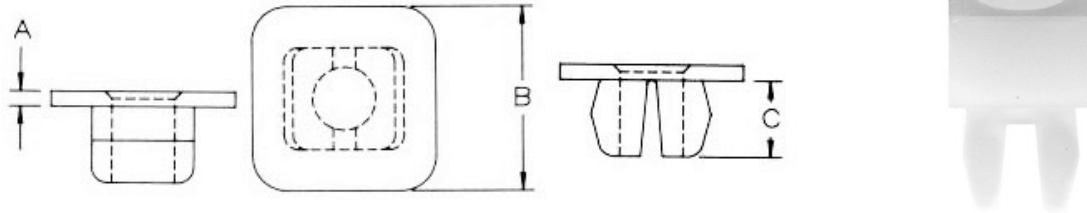
Material: Acetal Natural (off white)



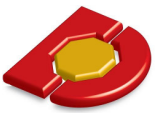
Grommet Nuts

Square Head Spacer Grommet Nuts

- ▶ Low cost, positive fastening of thin gauge materials & PCB's.
- ▶ As the self threading screw is tightened the legs expand to securely lock the screw and assembled parts in place.
- ▶ Recommended for securing heavy PCB modules.



Part Number	Hole Size mm	Panel Thickness	Screw Size	Head Size B	Hd Height A	Length C
SPSH05413	4.4-4.5 sq	0.8-0.2	4	5.4	1.3	5.5
SPSH05463	4.4-4.5 sq	0.8-0.2	4	5.4	6.3	5.5
SPSH09508	7.0-7.4 sq	0.8-3.2	8-10	9.5	0.8	8.1
SPSH09516	7.0-7.4 sq	0.8-3.2	8-10	9.5	1.6	8.1
SPSH09532	7.0-7.4 sq	0.8-3.2	8-10	9.5	3.2	8.1
SPSH09564	7.0-7.4 sq	0.8-3.2	8-10	9.5	6.4	8.1
SPSH11816	7.9 sq	0.8-3.2	10	11.8	1.6	7.5

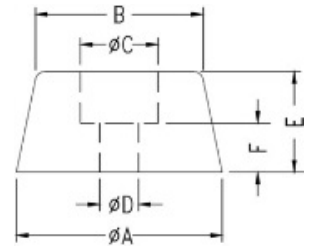
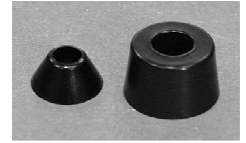
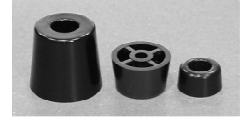


Bumpers

Bumper - PVC - Screw or Rivet Mount

- ▶ Moulded in a soft non slip black PVC.
- ▶ Secure mounting by screw or rivet.

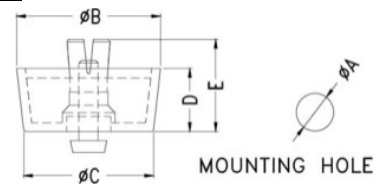
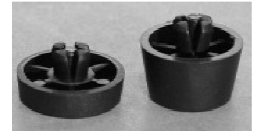
Part Number	Outside Dia. A	B mm	C mm	Mount Hole D	Height E	F mm	Fastening Screw or Rivet
RFSM0816	16.0	13.0	6.0	3.0	7.8	3.6	M3
RFSM1120	20.0	15.0	8.6	3.8	10.5	5.5	#6 or M4
RFSR1224	24.0	21.0	8.8	3.0	12.0	4.4	M3



Bumper - Fast Fix

- ▶ No screws - quick labour saving assembly.
- ▶ Simply place the foot into prepared 8mm hole and push centre pin for secure fixing.

Part Number	Mount Hole A	Outside Dia. B	Outside Dia. C	Height D	Length E
RFFF0413	5.0	12.7	12.0	4.4	8.5
RFFF0416	5.0	15.7	15.0	4.4	8.5
RFFF1020	8.0	20.0	18.0	10.0	15.4
RFFF1520	8.0	20.0	18.0	15.0	20.6
RFFF1820	8.0	20.0	18.0	18.0	23.6
RFFF1330	8.0	30.0	27.7	12.8	19.0

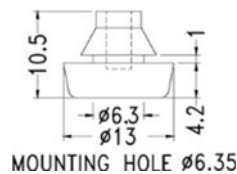


Bumper - Self Fix Rubber

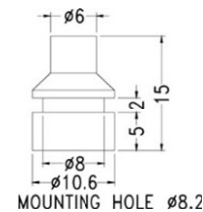
- ▶ No screws - quick labour saving assembly.
- ▶ Simply fit as you would a grommet.

Part Number	Mount Hole	Outside Dia.	Height
RFSF5024	5.0	9.5	2.4
RFSF8050	8.0	10.6	5.0
RFSF6442	6.4	13.0	4.2

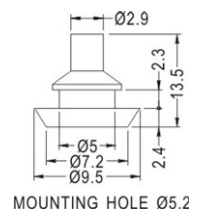
RFSF6442

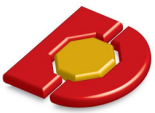


RFSF8050



RFSF5024





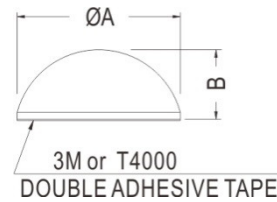
Adhesive Bumpers

Rubber Bumpers - Self Adhesive

- ▶ Moulded in black natural rubber for maximum cushioning.
- ▶ Quick assembly - skid and scratch resistant.
- ▶ Reliable 3M double sided adhesive.

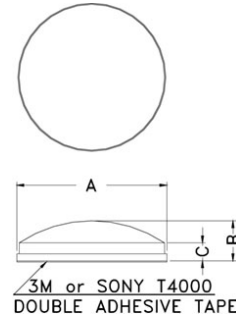
Dome

Part Number	Dia. A	Height B	Colour
BAAD0704	6.7	4.2	Black
BAAD1206	11.5	5.6	Black
BAAD1608	15.9	8.0	Black



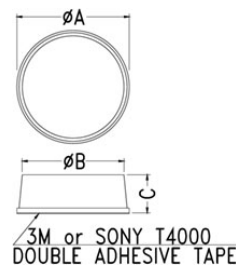
Raised Dome

Part Number	Dia. A	Height B	Height C	Colour
BARD0802B	8.0	2.4	1.0	Black
BARD0802C	8.0	2.4	1.0	Clear
BARD1004B	9.8	4.0	1.0	Black
BARD1004C	9.8	4.0	1.0	Clear
BARD1405B	14.0	5.0	3.6	Black
BARD1450C	14.0	5.0	3.6	Clear



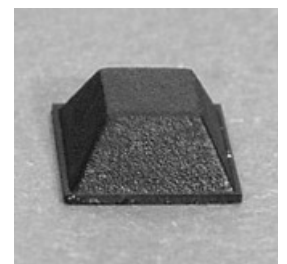
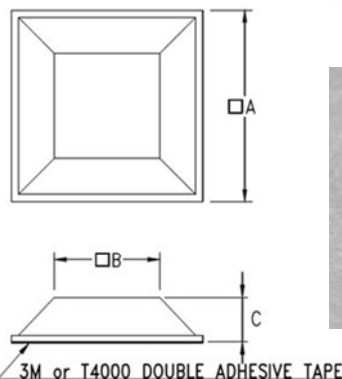
Round Taper

Part Number	Dia. A	Dia. B	Height C	Colour
BATB0935	9.0	8.6	3.5	Black
BATB1130	10.5	10.0	3.0	Black
BATB1240	12.0	9.5	4.0	Black
BATB1350	13.0	11.4	5.0	Black
BATB1972	19.0	17.0	7.2	Black

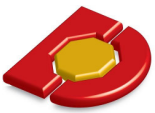


Square Taper

Part Number	Side A	Side B	Height C	Colour
BASC1335	12.7	9.0	3.5	Black
BASC1360	12.7	7.0	6.0	Black
BASC2176	20.5	14.0	7.6	Black



Other styles , Dimensions and Materials and Colours available.

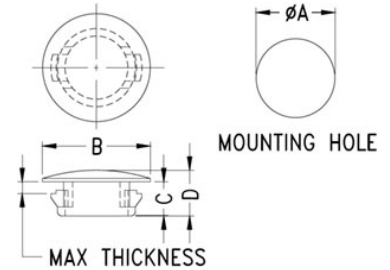


Hole Plugs

Hole Plugs - Locking

► Multiple locks to positively snap into panel thicknesses from 0.8 to 3.2mm.

Part Number	Panel Hole Diameter	Max Panel Thickness	Head Dia. B	Depth C
HPLC1605	4.8	1.6	6.4	5.9
HPLC1606	6.3	1.6	8.0	8.0
HPLC1608	8.0	1.6	9.5	8.0
HPLC3209	9.5	3.2	12.0	10.3
HPLC3211	11.0	3.2	13.5	10.3
HPLC3213	12.7	3.2	14.6	10.3
HPLC3214	14.3	3.2	16.7	10.3
HPLC3216	15.9	3.2	18.2	10.3
HPLC3219	19.1	3.2	23.2	10.3
HPLC3221	20.6	3.2	22.6	10.3
HPLC3222	22.2	3.2	25.8	11.5
HPLC3225	25.4	3.2	30.5	11.5
HPLC3228	28.0	3.2	31.0	11.5
HPLC3230	30.1	3.2	33.3	11.5
HPLC3232	32.0	3.2	34.9	11.5
HPLC3235	35.0	3.2	38.0	11.5
HPLC3238	38.0	3.2	42.7	11.5
HPLC3245	45.0	3.2	48.9	11.5
HPLC3251	51.0	3.2	55.0	11.5
HPLC3264	63.5	3.2	70.5	19.1



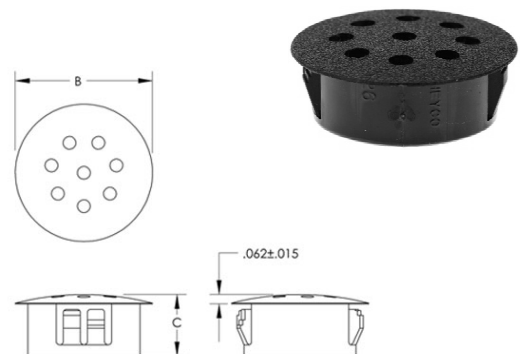
Black Heat Stabilised Nylon - White available in some sizes

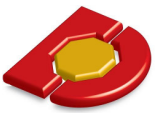
Vent Plugs - Locking

► Positively snaps into panel thicknesses from 0.8 to 3.2mm.

Part Number	Panel Hole Diameter	Max Panel Thickness	Head Diameter B	Depth C
HPVE1932	19.1	3.2	23.0	10.3
HPVE2232	22.5	3.2	25.8	11.5
HPVE2532	25.4	3.2	30.5	11.5

Moulded from black heat stabilised nylon





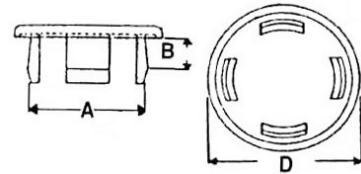
Hole Plugs - Non Locking

Metric Sizes

- ▶ Designed with flexible tapered prongs which snugly lock in place with finger pressure but can be removed easily and replaced.

Part Number	Panel Hole Dia. mm A	Max Panel Thickness	Head Diameter B	Head Height
HPNM0610	6.0	0.8-1.6	10.0	2.0
HPNM0812	8.0	0.8-3.5	12.0	2.0
HPNM1014	10.0	0.8-3.5	14.0	2.0
HPNM1216	12.0	0.8-3.5	16.0	2.0
HPNM1418	14.0	0.8-3.5	18.0	2.0
HPNM1620	16.0	0.8-3.5	20.0	2.0
HPNM1822	18.0	0.8-4.0	22.0	2.0
HPNM2026	20.0	0.8-4.0	26.0	2.0
HPNM2228	22.0	0.8-4.0	27.8	2.0
HPNM2428	24.0	0.8-4.0	28.0	2.0
HPNM2630	26.0	0.8-4.0	30.0	2.0

Nylon 6/6 Natural, Matt - Black available

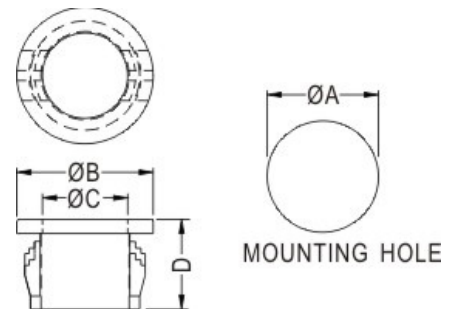


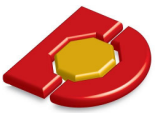
Insulating Bushes - Adjustable

- ▶ Adjusts to accept various diameters and shapes.
- ▶ Locks quickly into panel thicknesses 0.8 - 3.2mm.
- ▶ Resilient multiple supports absorb shock and vibration.
- ▶ Closes entry hole to insects and vermin.

Part Number	Panel Hole Dia.	Max Cable Dia. A	Overall Length C	Outside Dia. B
HPAB1611	15.9	11.1	10.3	18.2
HPAB1913	19.0	12.7	9.9	21.8
HPAB2214	22.2	14.2	11.5	23.8
HPAB2519	25.4	19.0	11.5	26.9
HPAB2821	27.8	20.6	11.5	29.3

Heat Stabilised Nylon 6/6 UL94V2 Black Temperature Index 105°C





Continuous Grommet Strip

- ▶ Serrated strip used to protect cords, wires and cables from sharp edges of large round, square and odd shaped holes. Cut to size required.

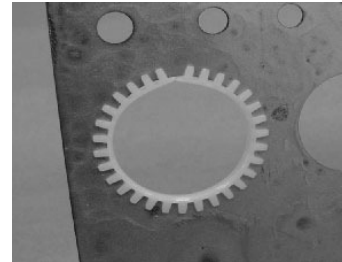
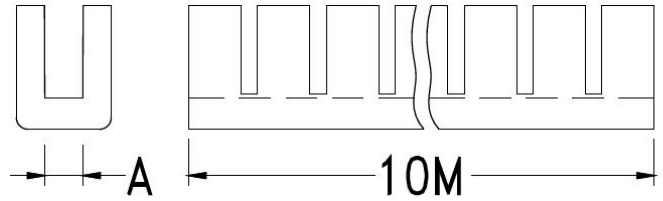
Moulded Nylon

Supplied in 25m lengths.

Precise fit to panels.

Part Number	Max Panel Thickness T	A mm
GSNA1043	1.0	4.3
GSNA1650	1.6	5.0
GSNA2054	2.0	5.4
GSNA2458	2.4	5.8
GSNA3260	3.2	6.0

Stock Colour: Natural

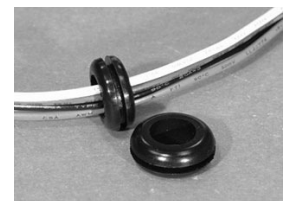
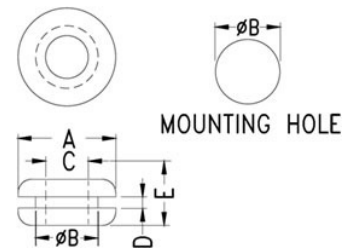


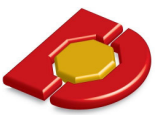
Rubber Grommets

- ▶ Good seal and mechanical protection for cables.

Part Number	Panel Hole Dia. B	Max Cable Dia. C	Overall Length E	Outside Dia. A	Max Pan. Thickness D
HPRG0532	4.8	3.2	6.4	8.0	1.6
HPRG0640	6.3	4.0	6.4	9.5	1.6
HPRG0845	8.0	4.5	4.5	10.8	1.6
HPRG0963	9.5	6.3	7.0	14.4	1.6
HPRG1180	11.1	8.0	4.8	14.2	1.6
HPRG1395	12.7	9.5	6.8	17.5	1.6
HPRG1814	17.5	14.2	4.8	22.0	1.6
HPRG1916	19.0	16.0	5.5	22.0	1.6
HPRG2518	25.2	18.5	8.0	31.4	1.6

Material: Rubber Colour: Black





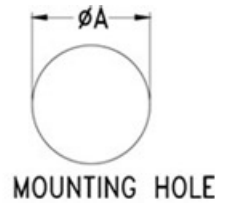
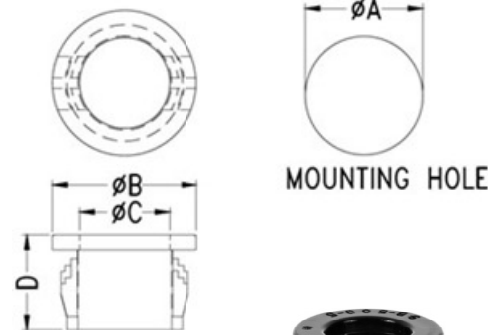
Insulating Bushes

Insulating Bushes - Miniature

- ▶ Insulate wires and cables from raw edges.
- ▶ Snaps quickly into panel hole.
- ▶ Will accommodate panels up to 1.6mm thick.
- ▶ Requires internal clearance of only 3.2mm.

Part Number	Panel Hole Dia.	Max Cable Dia. A	Overall Length C	Outside Dia. B
HPMB0503	4.8	3.2	6.2	6.4
HPMB0806	8.0	6.4	6.2	9.5
HPMB1209	11.9	8.8	6.4	13.5
HPMB1309	12.7	9.5	6.4	14.3
HPMB1310	13.5	10.3	6.4	15.2
HPMB1613	15.9	12.7	6.4	17.9
HPMB1916	19.0	16.0	6.4	21.0
HPMB2219	22.2	19.0	6.4	23.8

Heat Stabilised Nylon 6/6 UL94V2 Black Temperature Index 105°C



MOUNTING HOLE

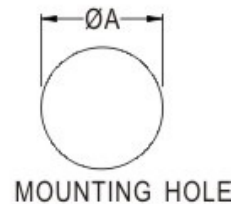
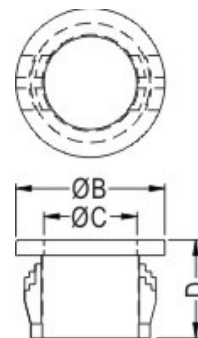
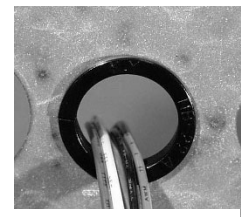


Insulating Bushes - Standard

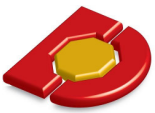
- ▶ Standard bushes have multiple locks which snap positively into panels ranging from 0.8 to 3.2mm thick.
- ▶ Meet UL & CSA Temperature and Pull out tests.

Part Number	Panel Hole Dia.	Max Cable Dia. A	Overall Length C	Outside Dia. B
HPSB0703	6.6	3.2	8.0	8.0
HPSB0805	8.0	4.8	10.3	10.3
HPSB0906	9.5	6.4	10.3	11.9
HPSB1108	11.1	8.0	10.3	13.5
HPSB1308	12.7	8.0	10.3	14.7
HPSB1409	14.3	9.5	10.3	16.7
HPSB1613	15.9	12.7	10.3	18.2
HPSB1916	19.1	15.9	10.3	21.4
HPSB2519	25.4	19.0	11.5	28.6
HPSB2824	27.8	23.8	11.5	30.9
HPSB3024	30.2	23.8	11.5	33.3
HPSB3833	38.1	33.3	11.5	40.9
HPSB4435	44.4	34.9	11.5	47.6
HPSB5141	50.8	41.2	11.5	54.0

Heat Stabilised Nylon 6/6 UL94V2 Black Temperature Index 105°C



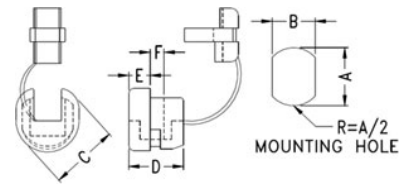
MOUNTING HOLE



Strain Relief Bushes

Strain Relief Bushes

- ▶ Efficient strain relief and insulation.
- ▶ Black Nylon bushing
- ▶ One piece product saves assembly time
- ▶ Meets UL & CSA stringent pull-out specifications



Straight Entry Types

Part Number	Cable Shape	Approx. Cable Size	Hole-Size Dia. Flats		Length D	Max Panel Thick. F
			A	B		
SRSF3625	Flat	3.0 x 5.6	11.0	9.9	10.3	2.5
SRSF5916		4.6 x 9.5	14.3	13.2	15.2	1.6
SRSF4101		4.1 x 10.4	15.9	14.0	14.7	1.6
SRSR5625	Round	5 - 6.5 Ø	12.7	11.4	11.1	2.5
SRSR7816		7 - 8 Ø	15.9	14.0	14.7	1.6
SRSR7832		7 - 8 Ø	15.9	14.0	14.7	3.2
SRSR8916		8 - 9 Ø	15.9	14.0	14.8	1.6
SRSR8932		8 - 9 Ø	15.9	14.0	14.8	3.2
SRSR9112		9.1 - 10.9 Ø	19.0	16.8	19.1	1.6

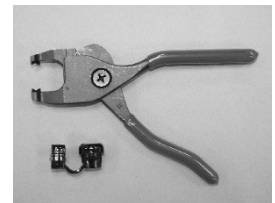


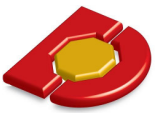
Heat Stabilised Nylon Black – Temperature Index 105°C

Assembly Tool

- ▶ Unique rack and pinion principle hand tool applies precise pressure for rapid insertion without risk of damage to cable or panel.

Part No. SRTC0001

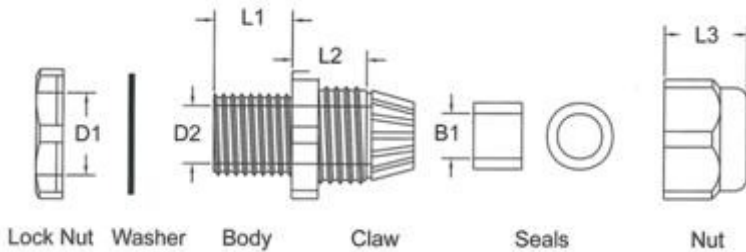




Cable Glands

Metric Integral Claw Type

- ▶ Metric standard cable gland
- ▶ Sealed IP68 water-proof
- ▶ One piece body/claw speeds up assembly.
- ▶ UL Approved E186042

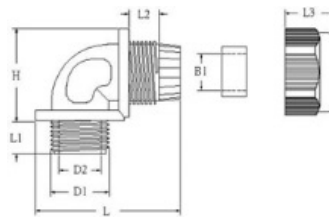


Metric Thread UL Approved Nylon 6/6 94V-2 Black

Part Number	Hole Dia. D1	D2	B1	L1	L2	L3	Cable Dia. Range mm
CGLM1200	12	8.3	6.0	7.9	12.1	13.3	3-6.5
CGLM1600	16	10.9	9.6	15.7	14.4	16.7	5-10
CGLM2000	20	14.8	12.9	15.0	19.5	18.4	10-14
CGLM2500	25	18.6	16.4	15.2	18.7	22.3	13-18
CGLM3200	32	26.0	25.0	14.7	34.5	25.7	18-25

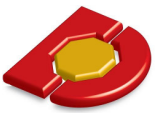
Right Angle Cable Gland

- ▶ One piece body/claw speeds up assembly.
- ▶ 90° cable entry.



NPT Thread

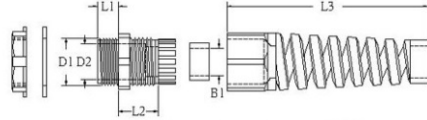
Part Number	Hole Dia. D1	NPT Thread	D2	B1	L1	L2	L3	L	H	Cable Dia. Range mm
CGRN1712	16.6	3/8"	12	9.3	11.7	9.9	16.7	48.5	30.0	5-9
CGRN2115	21.0	1/2"	14	13.0	14.7	11.8	18.4	51.8	31.2	10-13
CGRN2615	26.3	3/4"	19.2	16.4	14.8	12.6	22.3	64.5	41.6	13-16
CGRN4219	41.7	1 1/4"	31.6	29.3	18.8	16.3	31.0	85.0	53.0	22-29



Cable Glands

Metric Strain Relief Type

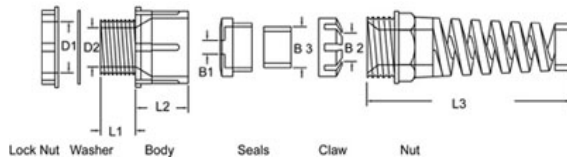
- ▶ One piece body/claw speeds up assembly.
- ▶ Metric Thread
- ▶ UL Approved
- ▶ Nylon 6/6 94V-2 Black



Part Number	Hole Dia. D1	D2	B1	L1	L2	L3	Cable Dia. Range mm
CGSR1208	12	8.3	6.0	7.9	12.1	53.3	3-6.5
CGSR1614	16	10.9	9.6	14.4	14.4	74.9	5-10
CGSR2013	20	14.8	12.9	12.8	19.5	96.2	10-14
CGSR2514	25	18.6	16.4	13.9	19.5	111.2	13-18

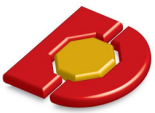
Imperial Strain Relief Type

- ▶ Support for cables in portable situations.



Part Number	Hole Dia. D	D2	B2	B3	L1	L2	L3	Cable Dia. Range
CGSR1612	16	10.5	7	10	12	17	62	5-9
CGSR2013	20	13.7	9	13	13	19	78	8-13

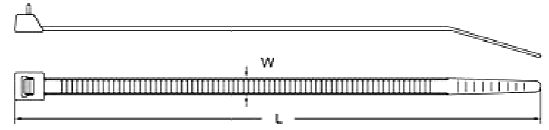
UL Approved Nylon 6/6 Black **PG Thread** Pitch 1.5mm



Standard Strap Type

- ▶ Manufactured from tough, durable Nylon 6/6 with a flammability rating of UL94V2.
- ▶ Tensile strength meets MIL-S-23190D (PVC type) MIL-S-23190E (NT type).

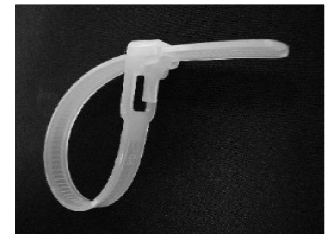
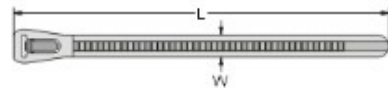
Part Number	Length W mm	Width W mm	Bundle Max Diameter
ACTN1002	100	2.5	22
ACTB1002	100	2.5	22
ACTN1504	150	3.5	35
ACTB1504	150	3.5	35
ACTN2002	200	2.5	55
ACTB2002	200	2.5	55
ACTN2005	200	4.6	50
ACTB2005	200	4.6	50
ACTN3005	300	4.7	85
ACTB3005	300	4.6	85
ACTN3805	390	4.6	110
ACTB3805	390	4.6	110
ACTR3808	380	7.6	100

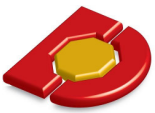


Release Cables

- ▶ Easy finger catch good for temperature fastening.

Part Number	Length L mm	Width W mm	Bundle Max. Diameter	Min. Tensile Strength kg
ATRB1258	125	7.6	30	22.0
ATRB2008	200	7.6	39	22.0



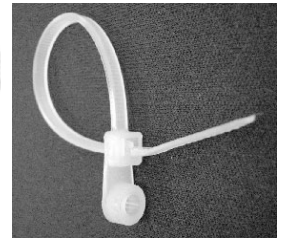
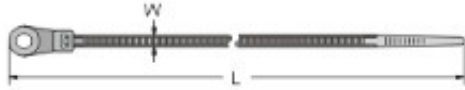


Cable Ties - Miscellaneous

Cable Ties - Miscellaneous Strap Type

Screw Hole Mounting PCW Series

- ▶ Anchor your cables quickly with integral screw hole mount.

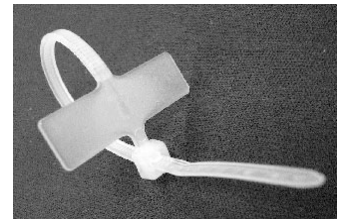
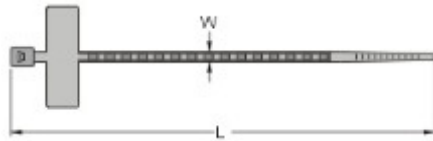


Part Number	Length L mm	Width W mm	Bundle Max. Diameter	Min. Tensile Strength kg	Mounting Hole mm
ATSH1504	155	3.7	40	18.0	4.6-5.0
ATSH2004	205	4.2	60	23.0	4.6-5.0

UL Approved Nylon 6/6

Marker Ties

- ▶ Tie and identify bundles of cable in one operation.

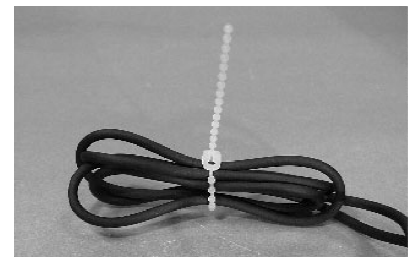
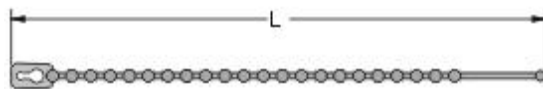


Part Number	Length L mm	Width W mm	Bundle Max. Diameter	Min. Tensile Strength kg	Label Size mm
ATMK1002	100	2.5	25	8.0	253x82

UL Approved Nylon 6/6

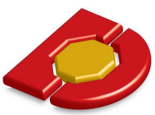
Beaded Ties

- ▶ Easy to install and release.



Part Number	Length L mm	Bundle Max. Diameter
ATBR1001	108.0	29.0
ATBR1501	152.0	43.0
ATBR2001	203.0	62.0

UL Approved Nylon 6/6 Natural

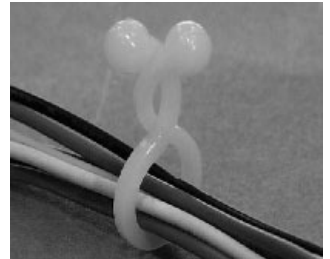
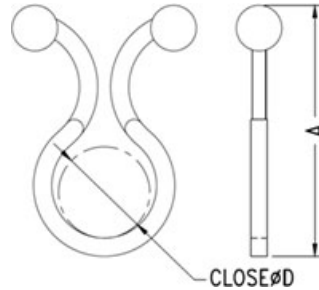


Cable Ties - Twist

Twist Type Tie

- ▶ A simple twist of the fingers and the tie is secure.
- ▶ Another twist and it is released.
- ▶ Tidy up random wiring.

Part Number	W Dia. mm	L mm
CCTT2207	5.1-6.9	22.2
CCTT3013	10.2-12.7	30.5
CCTT3216	13.9-16.5	32.0
CCTT3920	17.8-20.3	39.4
CCTT6839	36.8-39.4	67.8
CCTT8851	48.3-50.8	87.9

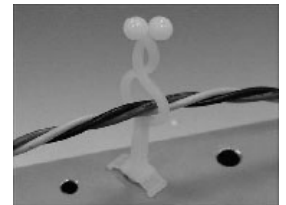
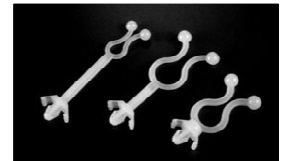
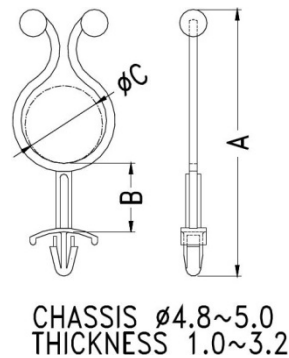


UL Approved Nylon 6/6 Natural or Black

Spacer Twist Tie

- ▶ Keep cables away from hot components.
- ▶ Cables secured and supported with a twist.
- ▶ Locks quickly into a 4.8mm hole.

Part Number	Max. Bundle Dia. W	A mm	H mm
CCST0411	11.0	4.0	30.0
CCST1811	11.0	18.0	30.0
CCST0605	5.0	6.0	22.0
CCST2406	6.0	24.0	22.0
CCST3106	6.0	31.0	22.0



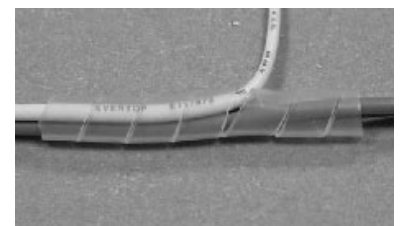
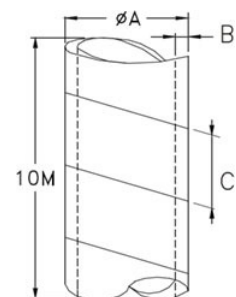
UL Approved Nylon 6/6

Spiral Wrap

- ▶ Versatile and reusable wrapping for wiring.
- ▶ Protect wires from abrasion and flexing.
- ▶ Spiral expands to size required.

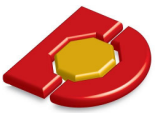
Polyethylene Natural

Part Number	A mm	B mm	C mm	Bundle Range Dia.
CSWN0425	4.5	0.6	6.7	4-25
CSWN0950	12.0	0.85	15.0	9-50
CSWN2010	24.0	1.3	21.5	20-100



Supplied in 10m rolls.

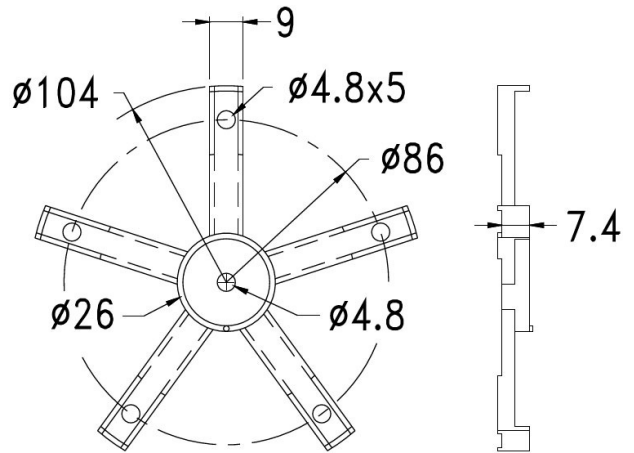
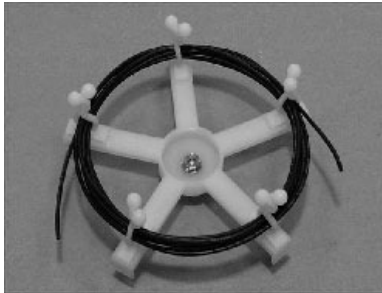
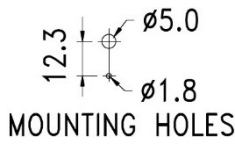
Also available in black – enquire for part number.



Fibre Optic Cable Clips

Fibre Optic Cable Mount

- ▶ Collect and protect excess fibre optic cable lengths near to termination.
- ▶ Each assembly requires 5 pieces of one of the barb lock mount twist ties listed below or CWS type wire saddles listed on page 52.



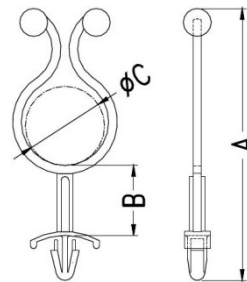
Part Number: CCRT4843

Barb Lock Mount Twist Ties for Fibre Optic Mount

- ▶ Locks quickly into a 4.8mm hole for accurate mounting.
- ▶ Cables secured and supported with a twist.

Part Number	Max. Bundle Dia. W Closed	A mm	H mm
CCST0605	4.8	4.0	22.0
CCST0207	7.2	2.5	26.0
CCST0411	10.5	2.5	31.0
CCST0214	14.0	2.3	30.7

UL Approved Nylon 6/6



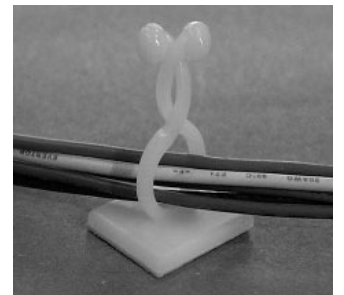
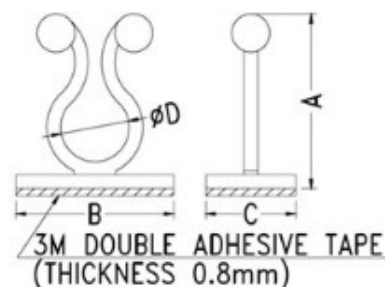
CHASSIS $\phi 4.8 \sim 5.0$
THICKNESS 1.0~3.2

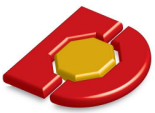
Adhesive Mount Twist Ties

- ▶ Mounts quickly on to flat surfaces.
- ▶ Cables secured and supported with a twist.

Part Number	Max. Bundle Dia. Closed	A mm	B mm	C mm
CCAT2908	8.2	28.7	25.0	13.0
CCAT2910	10.0	29.0	21.0	19.0
CCAT3314	13.8	32.7	20.0	20.0

UL Approved Nylon 6/6





Cable Tie Mounts

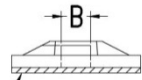
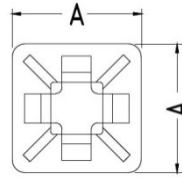
Cable Tie Mounts - Self Adhesive

- ▶ Reduce install time for lightweight wire bundles.

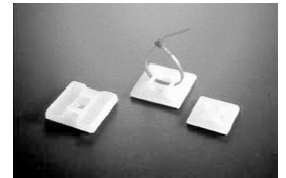
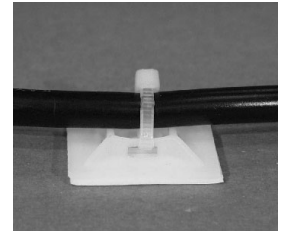
Material: UL Approved Nylon 6/6

Part Number	A mm	Tie Hole Width B
CTMA2105	21.4	4.7
CTMA2805 \emptyset	28.4	5.5

\emptyset CTMA2805 has screw mounting facility for heavy cable bundles



3M DOUBLE ADHESIVE TAPE
(THICKNESS 0.8mm)



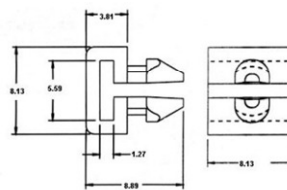
Cable Tie Mounts - Clip Mount

- ▶ Quick Assembly.
- ▶ Push and lock.

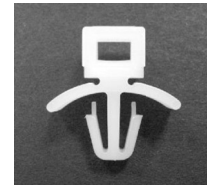
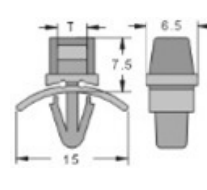
Part Number	L mm	Hole Size mm	Tie Hole Width
CTMC4855	8.8	4.8	5.5
CTMC4838	15.3	4.8	3.8
CTMC6381	19.0	6.3	8.1

UL Approved Nylon 6/6 Natural
* Also Beaded Types

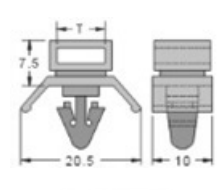
CTMC4855



CTMC4838



CTMC6381



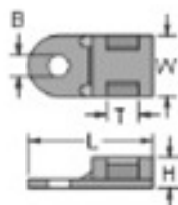
Cable Tie Mounts - Screw Mount Saddle

- ▶ Screw/saddle design provides maximum security for heavy wire bundles.

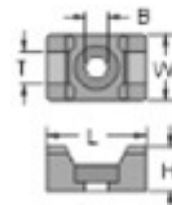
Part Number	H mm	L mm	W mm	B mm	T mm	Suitable for Cable Ties
CTMS3450	5.0	19.6	9.5	3.4	5.2	PCV075-250
CTMSM3350	7.0	15.2	10.3	3.3	5.0	PCV075-250

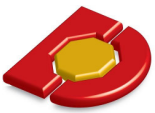
UL Approved Nylon 6/6 Natural

CTMS3450



CTMSM3350



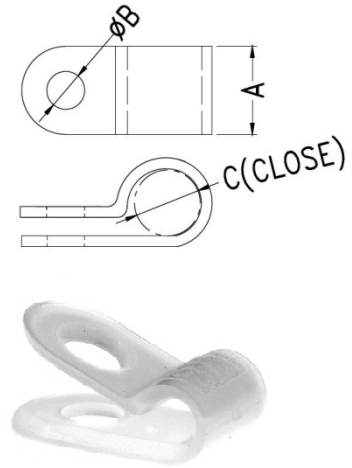


Miniature 'P' Clips

- ▶ Secure small cables neatly and firmly.
- ▶ Tough, durable and chemical resistant.

Part Number	Diameter D	Width C	Hole Size A
CCPM0401	0.8	4.0	2.5
CCPM0402	2.4	4.0	2.5
CCPM0403	3.2	4.0	2.5
CCPM0404	4.0	4.0	2.5
CCPM0405	4.8	4.0	2.5
CCPM0706	6.4	7.1	3.3
CCPM0709	9.5	7.1	3.3

Nylon 6/6 Natural



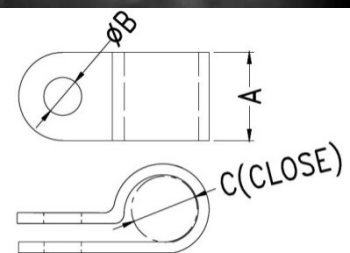
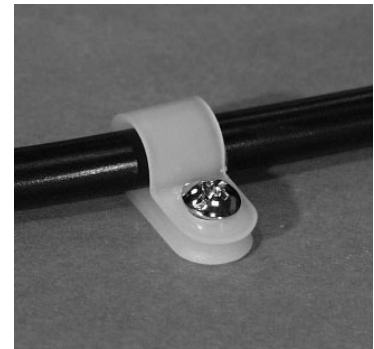
Standard 'P' Clips

- ▶ Tough, durable and chemical resistant
- ▶ Secure and insulate cables, wiring and tubing.
- ▶ All contact edges have a full radius to protect cable.
- ▶ Proven for electronics, marine, aircraft and appliances.

Part Number	Diameter D	Width C	Hole Size A
CCPS0903	3.2	9.5	4.2
CCPS0905	4.8	9.5	4.2
CCPS0906	6.3	9.5	4.2
CCPS0908	8.0	9.5	4.2
CCPS0909	9.5	9.5	4.2
CCPS0911	11.1	9.5	4.2
CCPS0913	12.7	9.5	4.2

CCPS1309	9.5	12.7	4.2
CCPS1313	12.7	12.7	4.2
CCPS1316	15.8	12.7	4.2
CCPS1319	19.1	12.7	4.2
CCPS1325	25.4	12.7	5.2
CCPS1332	31.8	12.7	5.2

Nylon 6/6 Natural

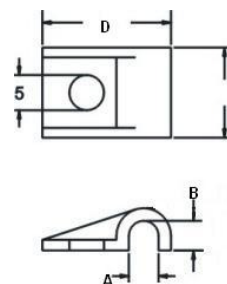


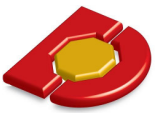
Heavy Duty Cable Clamps

- ▶ Reinforced side flanges provide added strength and rigidity.
- ▶ Compact design allows clip to be used on corners or edges or where space is limited.

Part Number	A	B	C	D
CCSM0308	2.9	2.9	7.8	17.1
CCSM0408	4.4	4.4	8.3	18.6
CCSM0609	6.0	6.0	9.3	20.1
CCSM0710	7.5	7.5	10.2	21.8

Nylon 6/6 Natural





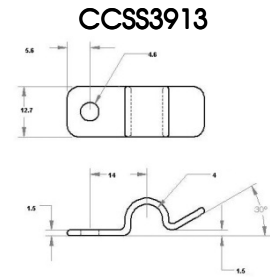
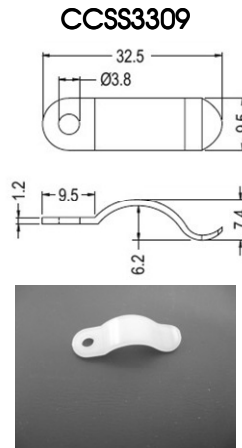
Miscellaneous Cable Clips

Spring Clips

- ▶ Spring retention of cables, tubing, wire bundles, flat cable, panels, spare components or tools.

Part Number	L mm	W mm
CCSS3309	33.0	9.5
CCSS3913	39.0	12.7

Nylon 6/6

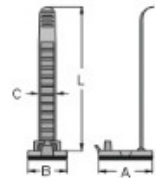


Ladder Cable Clamp - Adhesive Mount

- ▶ Locks securely - easily re-opened for changes.
- ▶ 1 part handles wide range of cable bundles.
- ▶ Optional screw fastening.

Part Number	Max Bundle Dia. mm	L mm	A mm	B mm	C mm
CCLA0815	15.0	25.4	18.1	8.0	
CCLA0820	20.0	25.4	18.1	8.0	

Nylon 6/6

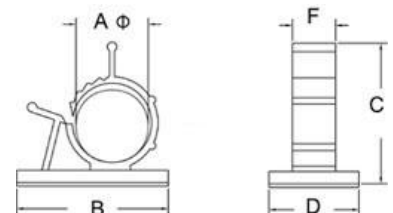


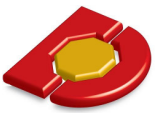
Adjustable Cable Clip - Adhesive Mount

- ▶ Locks securely - easily re-opened for changes.
- ▶ 4 part lock to clamp cables.
- ▶ 5 sizes adjustable for bundle diameters 7.9 - 25.4mm.

Part Number	Bundle Dia. AØ	B mm	C mm	D mm	F mm
CCRA1010	7.9-10.3	25.4	22.2	19.1	10.2
CCRA1012	10.0-12.5	31.8	27.8	19.1	10.2
CCRA1315	12.6-15.4	38.1	31.8	19.1	12.7
CCRA1320	16.5-20.1	50.8	44.5	25.4	12.7
CCRA1325	22.2-25.4	50.8	44.5	25.4	12.7

Nylon 6/6





Wire Saddles

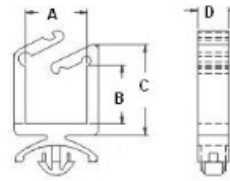
Wire Saddles - Locking and Non Locking

- ▶ Gather and direct wires at low cost.
- ▶ Provision for lock fastening of bundle.
- ▶ Quickly snaps into 4.8mm hole.

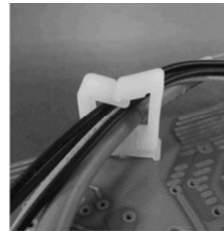
Part Number LOCKING	Part Number NON LOCKING	A mm	W mm	H mm
CWSL1105	CWSN1105	5.0	11.1	21.0
CWSL1109	CWSN1109	9.0	11.1	27.0
CWSL1118	CWSN1118	18.0	11.1	36.0
CWSL1126	CWSN1126	26.0	11.1	44.0

Nylon 6/6

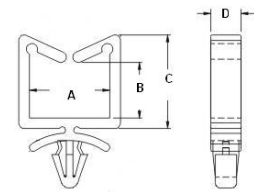
Locking



CHASSIS Ø4.8
THICKNESS 0.8-1.6



Non-Locking



CHASSIS Ø5.0
THICKNESS 1.2-2.0



Wire Saddles - Miniature

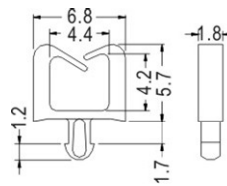
- ▶ Gather and direct wires at low cost.
- ▶ Clip snaps into pre-punched hole.

Part Number	Panel Hole	A mm	W mm	H mm
CWSM0304	1.8	3.0	4.3	5.8
CWSM406	3.0	3.6	6.3	6.4
CWSM0507	3.0	5.0	6.8	7.6
CWSM0809	3.5	8.5	8.8	11.5

Nylon 6/6



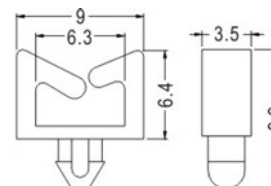
CWSM0304



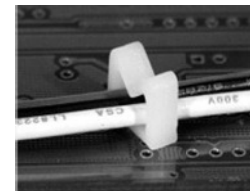
P.C.B Ø1.75
THICKNESS 1.6



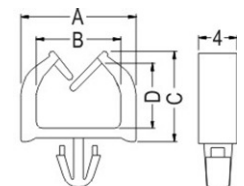
CWSM406



CHASSIS Ø3.0
THICKNESS 1.2-1.6



CWSM0507 & CWSM0809



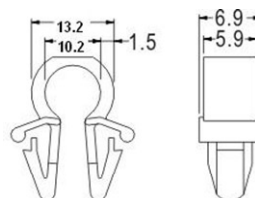
CHASSIS ØE
THICKNESS 1.0-1.6



Wire Saddles - Miscellaneous

Part Number	Panel Hole
CWSB1010	6.0
CWSB1510	6.0-6.5
CWSB1821	4.8-5.0

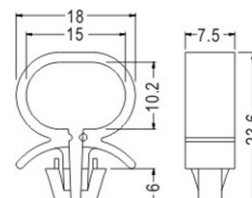
CWSB1010



CHASSIS Ø6.0
THICKNESS 2.0



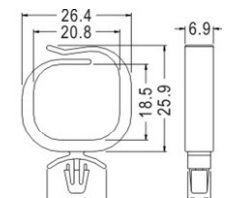
CWSB1510



CHASSIS Ø6.0-Ø6.5
THICKNESS 0.8-2.5

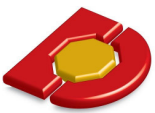


CWSB1821



CHASSIS Ø4.8-Ø5.0
THICKNESS 0.8-2.0





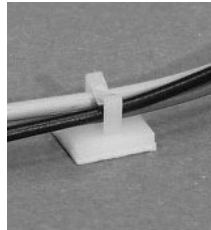
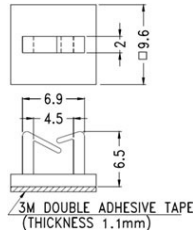
Adhesive Cable Clips

Wire Saddles - Adhesive Mount Types

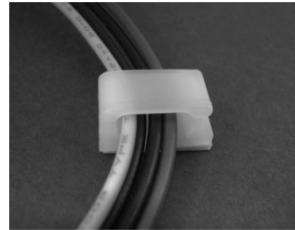
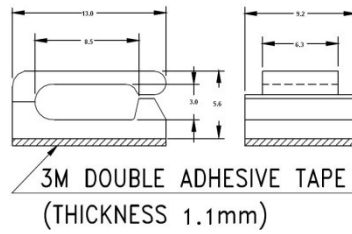
- ▶ Backed with adhesive foam tape for quick control of wires.
- ▶ Easy release clip for wires.

Part Number	Wire Bundle	
	H mm	W mm
CSAM0404	3.8	4.5
CSAF0308	3.0	8.0
CSAC0303	3.2	3.2
CSAC0505	4.8	4.8
CASF1006	10.2	5.8
CASF1012	10.0	11.6
CSAC0812	8.0	12.0
CSAC1112	11.0	12.0

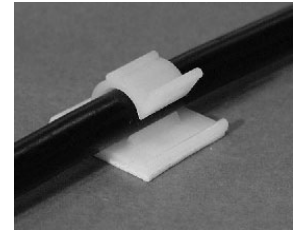
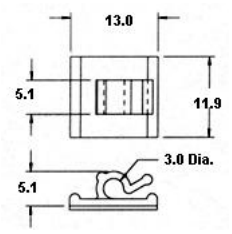
CSAM0404



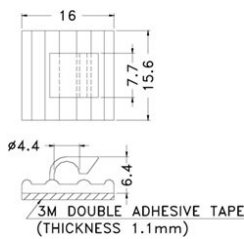
CSAF0308



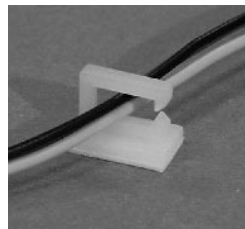
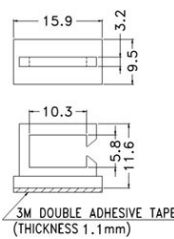
CSAC0303



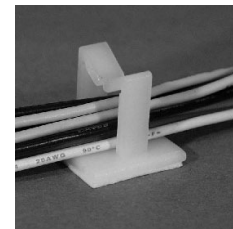
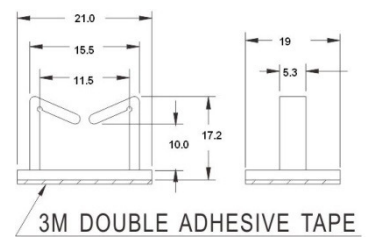
CSAC0505



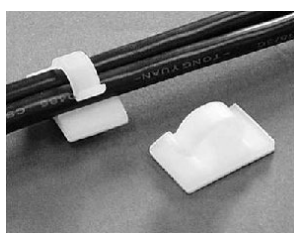
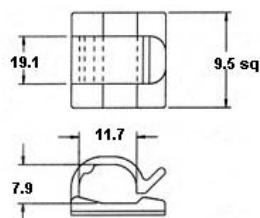
CASF1006



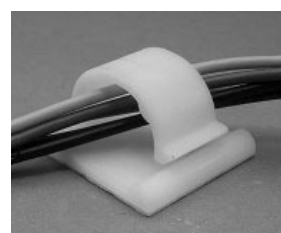
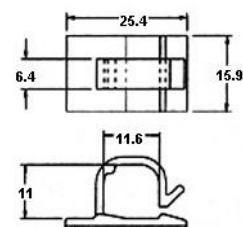
CASF1012



CSAC0812



CSAC1112





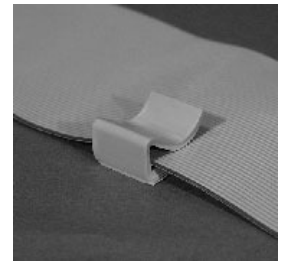
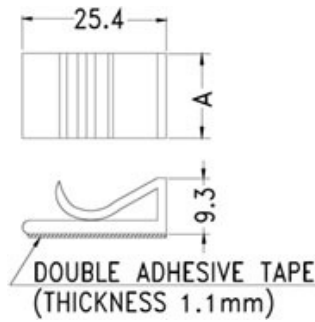
Flat Cable Clips

Flat Cable Clips - Adhesive Mount

- ▶ Serrated grip to prevent slipping.
- ▶ Will retain 2-3 flat cables neatly.
- ▶ Use one each side for wide cables.

Part Number	W mm	L mm	H mm
CFAG0925	15.0	25.0	9.5

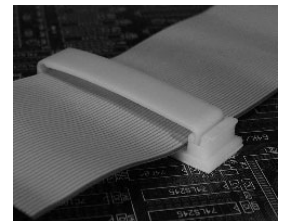
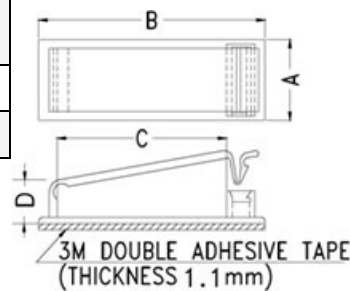
Grey PVC



- ▶ Designed for 40 & 50 way cables.
- ▶ Finger pressure on clip clamps flat cables down securely.

Part Number	A mm	B mm	C mm	D mm	E mm	F mm
CFAL3906	39.5	6.2	53.3	19.2	14.9	2.6
CFAL6306	63.5	6.2	77.5	19.8	14.9	2.8

Nylon 6/6

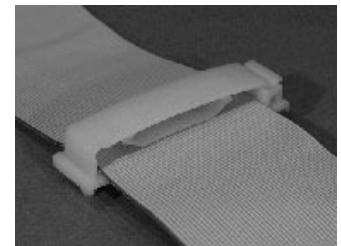
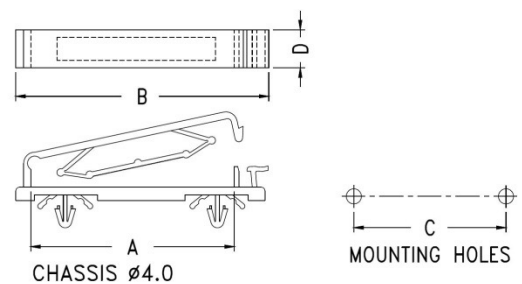


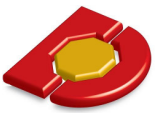
Flat Cable Clamp - Clip Mount

- ▶ Secure mounting in the correct position.
- ▶ Clamping device for range of cable numbers.

Part Number	Suitable For Cable	A mm	B mm	C mm
CFCL0154	40 way	53.8	66.0	40.0
CFCL0165	50 way	64.6	77.0	49.7

Nylon 6/6





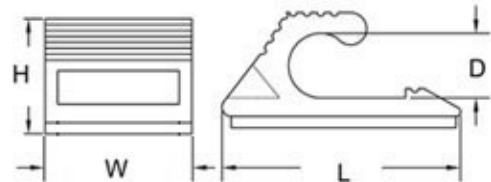
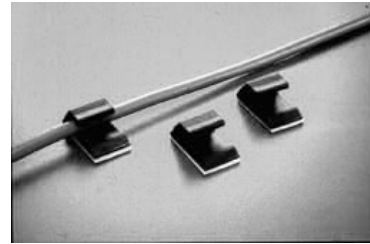
Miscellaneous Cable Clips

Miscellaneous Cable Clips - Adhesive Mount

- ▶ Nylon clips are tough and corrosion resistant.
- ▶ Fast convenient way to retain cables.

Part Number	D mm	A mm	H mm	W mm
CCA0621	6.3	21.1	9.2	12.8

Nylon 6/6

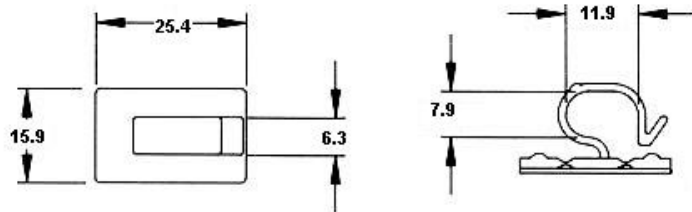


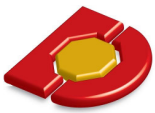
Contour Clip - Adhesive Mount

- ▶ Hinged base flexes to fit convex or concave surfaces.
- ▶ The flexible base can be used on pipes, tubing and on irregular surfaces - even around corners.
- ▶ Easy release clip for wires.

Part Number	A mm	W mm
CCAC0812	8.0	12.0

Nylon 6/6



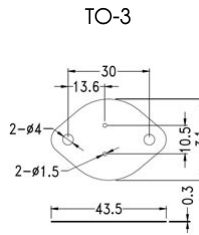


Transistor Mounts

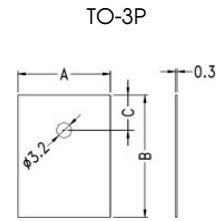
Power Transistor Insulator Pads

- ▶ Low Thermal Resistance.
- ▶ High breakdown voltage.
- ▶ Avoid the problems of Mica & Grease.
- ▶ Speed up assembly.

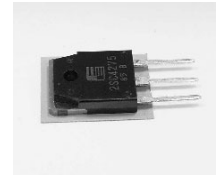
CONFIGURATIONS:



Part No.
IPLS3010



Part No.
IPRN2519



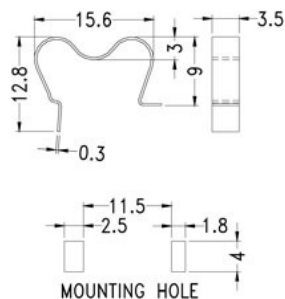
Physical Properties of Material

	Test Method	Unit	Typical Value Material A	Typical Value Material A.25
Colour			Grey	Grey
Thickness	ASTM D751	mm	0.3 ± 0.03	0.25 ± 0.03
Tensile Strength	ASTM D751	Kg/cm ²	160	160
Elongation	ASTM D751	%	3	3
Hardness, Shore A	ASTM D2240		80° ± 3°	80° ± 3°
Volume Resistivity	ASTM D257	ohm/cm	1x10 ¹⁵	1x10 ¹⁵
Dielectric Strength ¼" Electrodes	ASTM D149	volts	6000	4000
Temperature Range		°C	-50° to 120°C	-50° to 120°C
Flammability Class	UL-94		94V-0	94V-0
Coefficient Thermal Conduction		1 Cal/cm, Sec, °C	1 x 10 ⁻³	4.6 x 10 ⁻³
Thermal Resistance		°C/Watt	0.3	0.2

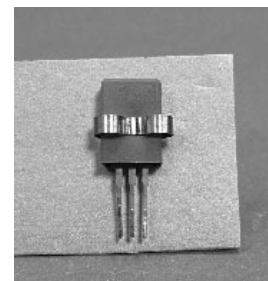
Also available in roll or sheet form

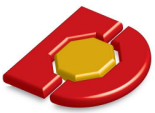
Transistor Spring Clamp Mount

- ▶ Speed up to TO-220 power transistor assembly.
- ▶ Use in conjunction with silicon insulation tubing or Pads



Part No. KTO220CLIP





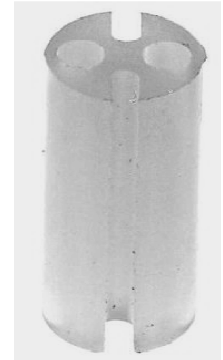
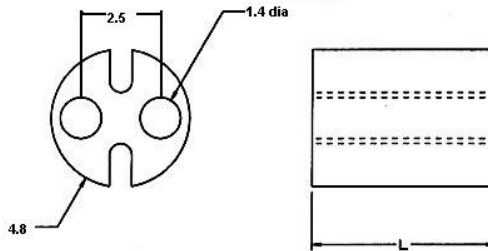
Miscellaneous LED Holders

General Purpose Moulded Nylon Mounts

- ▶ LED spacer / standoff
- ▶ Universal for 3mm and 5mm LED's.
- ▶ Material: Natural Nylon 6/6 UL94V-2.

Part Number	Length mm
LSRG2506	6.4
LSRG2509	9.5
LSRG2513	12.7

Also available in Black

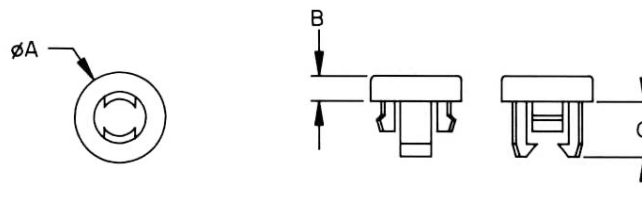
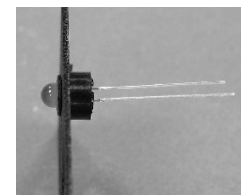
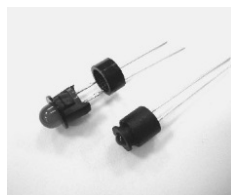
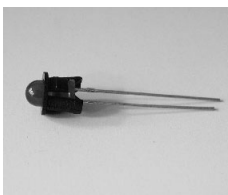
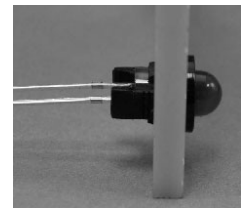


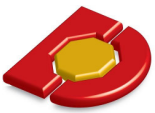
LED Panel Clip

- ▶ One piece part for quick assembly.
- ▶ For use with standard 5mm LED's.

Part Number	Hole Size mm	Max. Panel Thickness T	A mm	B mm	C mm
LMPC6264	6.1-6.3	1.8	8.1	0.6	6.4
LMPC7256	7.1-7.3	1.2	9.1	2.5	5.6
LMPC6462	6.4	3.0	7.9	0.5	6.2

Material: Nylon 6/6 Black





While the descriptions and information contained below are presented in good faith and believed to be accurate it is provided for guidance only. Because many factors affect application and use we recommend that you make tests to determine the suitability of a product for your particular purpose prior to use.

Nylon 6/6 Polyamide

General purpose nylon 6/6 has good toughness, tensile strength and resistance to creep, particularly in the high temperature range. Nylon has excellent wear properties, low coefficient of friction and exceptional chemical resistance particularly to aromatic hydrocarbons, greases and oils. Nylon is a hygroscopic material. Moisture acts as a plasticizer reducing the tensile strength! stiffness and increasing elongation! impact strength! energy absorbing characteristics. Outdoor weathering can be improved by the addition of carbon black. Nylon will perform well in long range service in most applications at temperatures as high as 85° C.

The natural colour is translucent off white.

Nylon 6/6 Heat Stabilized

Nylon heat stabilized has the same mechanical properties as general purpose nylon 6/6 with the additional advantage of heat stabilization. This material will withstand 121 °C in long range service in most applications.

Most stock items are black.

Nylon 6/6 Flame Retardant

Flame retardant nylon 6/6 has similar properties to general purpose nylon 6/6 with flame retardant additives for UL94VO rating.

Nylon 6/6 30% Glass Reinforced

Nylon 6/6 33% glass reinforced has outstanding property improvements over un-reinforced compositions. Improvements include greater tensile strength, deflection temperature, shear strength, improved creep resistance, better dimensional stability, lower moisture absorption and thermal expansion. The good wear resistance, electrical properties and low coefficient of friction of un-reinforced nylon 6/6 are retained.

Nylon 33% glass reinforced is opaque tan in colour.

Nylon 46 Polyamide

Nylon 46 is a high temperature nylon which bridges the price performance gap between traditional nylons and high performance materials. It has excellent short and long term heat resistance, high stiffness at elevated temperatures, high creep resistance, outstanding toughness, excellent fatigue behaviour, good chemical resistance and higher continuous use temperature. Nylon 46 is translucent off white in colour.

Acetal Copolymer (POM)

Acetal resins have strength, stiffness and hardness over a wide range of temperatures, humidity environments and stress. Acetal absorbs little water minimising the effect of moisture on its physical properties. Acetal resists neutral oils, grease, petroleum based fuels, many organic solvents and alkalis. Oxidizing agents and acids, organic and inorganic, with a PH less than 4 will attack acetals. Acetal is widely used in plumbing and irrigation because it resists scale build-up and has excellent thread strength.

High Density Polyethylene (HDPE)

Polyethylene is among the lowest density plastics and therefore is one of the lowest cost per volume. High density polyethylene has good toughness, excellent electrical properties and chemical resistance, good low temperature brittleness and very low water absorption. Polyethylene is essentially inert, unaffected by strong and weak acids, alkalis, detergents, alcohols and ketones. Polyethylene has low tensile strength and is subject to considerable creep and stress relaxation under load. Polyethylene will swell with chlorinated and aromatic hydrocarbons including gasoline and oils.

Polycarbonate (PC)

Polycarbonate is one of the toughest, most dimensionally stable thermoplastics over a wide temperature range. Polycarbonate has exceptionally high impact strength. It is unaffected by water below 60°C and can be used in boiling water on a limited basis. It is unaffected by greases, oils, detergents, aliphatic hydrocarbons, most mineral acids and the higher alcohols. It is attacked by chlorinated hydrocarbons and most aromatic solvents, esters and ketones. Polycarbonate has white water transparency with a 90% light transmission.

Polypropylene (PP)

Polypropylene has a good combination of rigidity and toughness at elevated temperatures, can be steam sterilized, good abrasion resistance and low coefficient of friction, non-hygroscopic, excellent electrical properties, unique flex properties, good chemical resistance without stress cracking, PP has one of the lowest densities and a high surface gloss. It has excellent chemical resistance to dilute acids, concentrated acids (except oxidising acids) alkalis, alcohols and detergents. PP resists aromatic hydrocarbons, chlorinated hydrocarbons, greases and oils at room temperature but it is attacked at about 60° C.



Miscellaneous Data

Important: The data and information listed below is provided for guidance only and shall not be used to establish specification limits or used alone as the basis of design. We recommend that you make tests to determine the suitability of a product, for a particular purpose, prior to use.

Raw Materials

Mechanical Property	Psi	ASTM Test	Unit	Nylon 6/6	Nylon 6/6 Flame Retarded	Nylon 6/6 Glass Filled	Acetal Copolymer	PVC	Poly-carbonate	Poly-ethylene	Poly-propylene
Tensile		D638	psi	12,000	11,600	28,000	8,800	6,200	10,300	3,200	4,700
Flexural		D790	psi	410,000	520,000	1,300,000	375,000	350,000	350,000	120,000	210,000
Izod Impact		D756	ft lbs/in	1	1.5	2.2	1.3	17.0	16	5	0.6
Deflection Temperature	66 264	D648	°C	221	224	257	158	137	135		104
		D648	°C	71	91	252	110	129	127		49
Dielectric		D149	Volts/mil	400	00	400	500	690	420		425
Volume		D257	ohm/cm	10 ¹⁴	10 ¹⁵	10 ¹⁴	10 ¹⁴		2x10 ¹⁷		
Water		D570	%24	1.5	2.6	1	0.22		0.15		0.3
Flammability		BUL94		94V2	94VO	94HB	94HB	94VO	94V2		
Melting Point		D789	°C	260	243	263	165		154		160

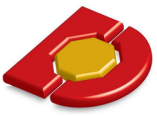
Nylon Machine Screws

Size	Ultimate Torque	Before Deformation	Tensile Test Max. Torque		Double Shear	
			Yield	Break	Yield	Break
M2 X 0.4	No Test	No Test	7 N.	N/B	116 N.	89 N.
M2.5 X 0.45	No Test	No Test	9 N.	N/B	169 N.	156 N.
M3 X 0.5	.32 Nm.	.20 - .26 Nm.	22 N.	N/B	329 N.	294 N.
M3.5 X 0.6	.43 Nm.	.28 - .34 Nm.	53 N.	N/B	405 N.	378 N.
M4 X 0.7	.45 Nm.	.36 - .43 Nm.	214 N.	N/B	636 N.	600 N.
M5 X 0.8	.93 Nm.	.73 - .79 Nm.	271 N.	N/B	1134 N.	1081 N.
M6 X 1.0	1.83 Nm.	1.41 - 1.47 Nm.	845 N.	912 N.	1877 N.	1806 N.
M8 X 1.25	3.39 Nm.	2.45 - 2.82 Nm.	1677 N.	1744 N.	3034 N.	2980 N.
M10 X 1.50	5.31 Nm.	4.52 - 4.86 Nm.	2749 N.	N/B	5280 N.	5026 N.

Nylon Hex Nuts

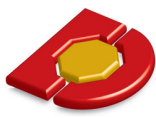
Size	Tensile	Ultimate Torque
M2	No Test	No Test
M2.5	135.23 N.	No Test
M3	142.34 N.	No Test
M3.5	369.20 N.	2.3 cm/Kg
M4	451.94 N.	4.5 cm/Kg
M5	940.35 N.	8.3 cm/Kg
M6	1556.65 N.	17.6 cm/Kg
M8	2597.76 N.	56.2 cm/Kg
M10	6283.11 N.	89.9 cm/Kg

All product descriptions and specifications are subject to change without notice.



Notes

Blank lined area for notes.



Index

Series	Page	Series	Page	Series	Page	Series	Page
ACTB	45	CGLM	43	NNTM	25	SPCR	14
ACTN	45	CGRN	43	NNTU	25	SPCW	1
ACTR	45	CGSR	44	NNWM	25	SPCX	15
ATBR	46	CSAC	53	NNWU	25	SPCY	15
ATMK	46	CSAF	53	NSCM	24	SPDF	16
ATRB	45	CSAM	53	NSHM	25	SPDG	16
ATSH	46	CSWN	47	NSPM	24	SPDH	16
		CTMA	49	NSSM	23	SPDI	17
		CTMC	49	NSTM	25	SPDJ	17
		CTMS	49	NSXM	24	SPDL	18
		CWSB	52			SPDM	18
BAAD	37	CWSL	52	PIPO	29	SPDN	18
BARD	37	CWSM	52			SPHA	19
BASC	37	CWSN	52			SPHB	19
BATB	37					SPHC	20
BATC	37	GSNA	40	RC47	3	SPHD	20
BF4.	10			RC6.	3	SPRT	4
BF5.	10			RC8.	3	SPSH	35
BF7.	12			RFFF	36	SPSR	4
BF8.	13			RFSF	36	SPST	14
BM5.	6	HPAB	39	RFSM	36	SRSF	42
BM7.	8	HPLC	38	RFSR	36	SRSR	42
BM8.	9	HPMB	41	RIBP	33	SRTC	42
		HPNM	39	RIFB	33		
		HPRG	40	RIFN	33		
		HPSB	41	RIKH	32		
		HPVE	38	RIPL	31	THAC	22
				RISA	34	THSC	22
CASF	53			RISC	29	TSDC	22
CCAC	55	IPLS	56	RISN	30	TSSC	22
CCAHA	55	IPRN	56				
CCAT	48						
CCCO	55	LMPC	57	SHFF	5	WACM	27
CCLA	51	LSRG	57	SHMF	5	WAFI	26
CCPM	50			SPAA	21	WAFM	26
CCPS	50	NNCM	25	SPAB	21	WASR	27
CCRA	51	NNCU	25	SPAS	21	WIBM	28
CCRT	48	NNDM	25	SPCB	1	WINM	28
CCSM	50	NNHM	25	SPCF	15	WIPM	28
CCSS	51	NNHU	25	SPCI	2		
CCST	48	NNLM	25	SPCM	14		
CCTT	47	NNLU	25				
CFAG	54						
CFAL	54						
CFCL	54						