

# EMI FILTERS



# ARLIN

# **ARLIN**

28 Commercial Drive  
THOMASTOWN VIC 3074  
AUSTRALIA

TEL: **03 9465 0011**

INT. : 61 3 9465 0011

FAX: 03 9465 5088

EMAIL: [sales@arlin.com.au](mailto:sales@arlin.com.au)

# **WHY FILTER . . .**

EMI: Electro-magnetic interference  
RFI: Radio frequency interference (same as above)

## **EMC: ELECTROMAGNETIC COMPATABILITY**

The increased use of electrical and electronic equipment throughout the world has resulted in significant problems with electromagnetic interference (EMI), the presence of unwanted electrical signals affecting the operation of other devices. To combat this problem, standards for Electromagnetic Compatibility for wide range of electrical and electronic equipment are now being enforced in Australia and in many other countries.

EMI can travel by conduction along power or signal cables, and also by radiation through the air. Radiation can be substantially reduced by earthed metal screening / shields with a minimum of openings. Conduction of electrical 'noise' via power cables can only be prevented by the use of AC mains power filters. Filters allow low frequency mains current (50Hz in Australia) to flow freely, but suppresses the higher frequency interference signals which would otherwise cause unacceptable EMI problems.

# SPECIFY A FILTER . . .

## Specifying of a power filter includes:

- **Voltage rating:** Normally 250vAC 50/60Hz, covering all common AC mains voltages from 100 to 250 volt. Note that three-phase 500 volt filters are also available.
- **Current Rating:** This must at least equal to the load current, but *the most effective filtering is obtained by close matching of filter rating to load.* Arlin's filters cover 1A – 160A.
- **Mounting Styles:** select from:
  1. IEC basic inlet filter
  2. IEC combination switched, fused, etc.
  3. Chassis mount
  4. PCB mount
- **Attenuation:** The effectiveness of a filter is indicated by the attenuation measured in decibels (dB) as a function of frequency; greater dB means better filtering. Attenuation curves are shown for each product in this catalogue, for a 50 Ohm load and source impedance.

Normal mode (symmetric or horizontal) attenuation is from line to line (active to neutral). Common mode (asymmetric or vertical) attenuation is from lines to earth. Both are significant in EMI rejection.
- **Approvals:** Where applicable, filters offered by Arlin have a wide range of approvals from authorities in Europe and North America. Approval file numbers for each product are available on application. The use of an approved filter is a significant step to obtaining international safety approval on a complete product.

## **STANDARDS**

A number of standards exist for EMC of electrical equipment. Details are available from Standards Australia or from Australian Communications Authority offices. Some Australian standards are listed below:

<u>Equipment</u>	<u>AS/NZS Standard</u>
Motor driven & thermal appliances & tools	1044
Lighting	4051
Audio & TV equipment	1053
I.T. equipment	3548
Industrial, scientific & medical equipment	2064 1/2
Generic Emission Standard	4251.1

Testing to these standards is performed by a number of laboratories throughout Australia. Names of accredited test laboratories are available from the Australia Communications Authority.

## FILTER SELECTION TABLE

STYLE	SERIES / CURRENT(A)	FEATURES	PAGE NO
<b>1. IEC BASIC</b> All with IEC inlet, 6.3mm tab outlet terminals, metal cased	Arlin YB-A1 <b>1,3,6,10</b> Schurter C20F    16, 20	Screw mount C20 20Amp inlet	4. 5.
<b>2. IEC COMBINATION</b> Fused Screw-in Fused Screw/Snap-in Fused voltage selector Switched/Screw-in Switched/Fused & voltage selector	Arlin YL <b>1,3,6,10</b> Schurter 5200 <b>1,2,4,6,8,10</b> Schurter KFA <b>1,2,4,6,10</b> Schurter KFB <b>1,2,4,6,10</b> Schurter CD <b>1,2,4,6,10</b>	M205 fused M205 fused Voltage selector incl'd With SP switch DP switch, M205/3AG fuse & volt selector	6. 7. 8. 9. 10.
<b>3. CHASSIS</b> Single stage  Two stage  High current Three phase High current 3 phase High current 3 phase	Arlin YK <b>1,3,6,10</b> Arlin YC <b>5,10,15,20</b> Arlin YC-L2 <b>1,3,6,10</b> Arlin YE-L2 <b>15,20</b> Arlin YJ            20,40,50,60 Arlin YH            10,15,20,30 Arlin YI            40,50,60 Arlin YP            60,80,100,150	Compact metal cased Metal cased High attenuation Highest attenuation M5 screw terminals M4 screw terminals M5 screw terminals M6 screw terminals	12. 13. 14. 15. 16. 17. 18 19.
<b>4. PCB MOUNT</b> Plastic cased	Arlin YF <b>1,3,6,10</b>	PCB 5 pin	20.
Notes: 1). Current ratings in bold are preferred items normally available from stock. 2). Non-stock items are readily available with typical leadtimes of 4-6 weeks. 3). We would be pleased to quote for any special requirements not listed in the catalogue.			

# YB-A1, YB-A3, SERIES

## FEATURES

- General purpose filter with IEC Connector providing effective line-to-ground noise up to 10 amp., 250 VAC
- Low cost
- Compact design
- 250 Faston terminals(YB-A1)
- SOLDER LUG TERMINALS(YB-A3)
- All parts are approved by UL, CSA, VDE, SEMKO, NEMKO, DEMKO and FIMKO

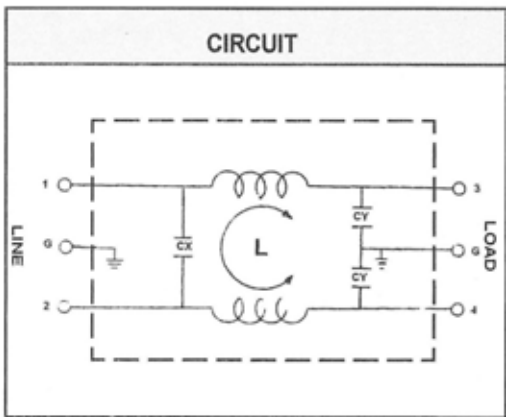


YB-A1

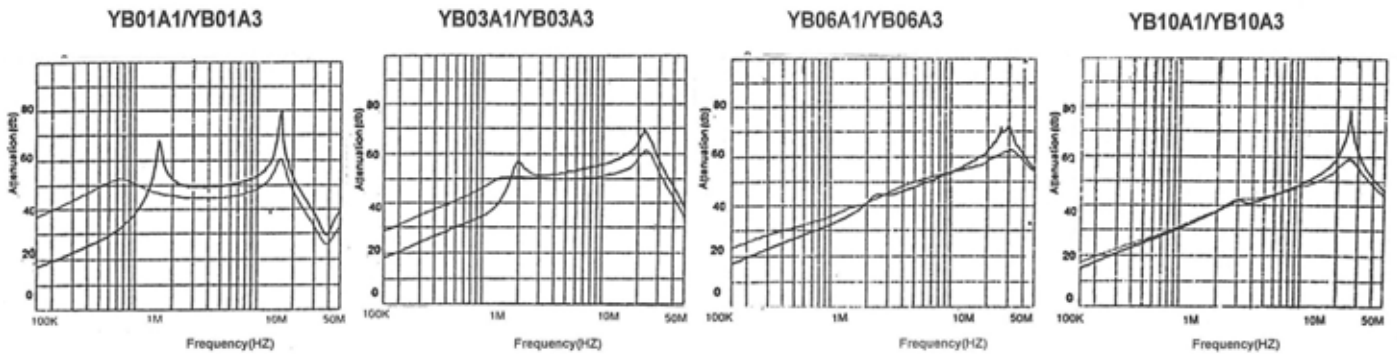
YB-A3

## SPECIFICATIONS

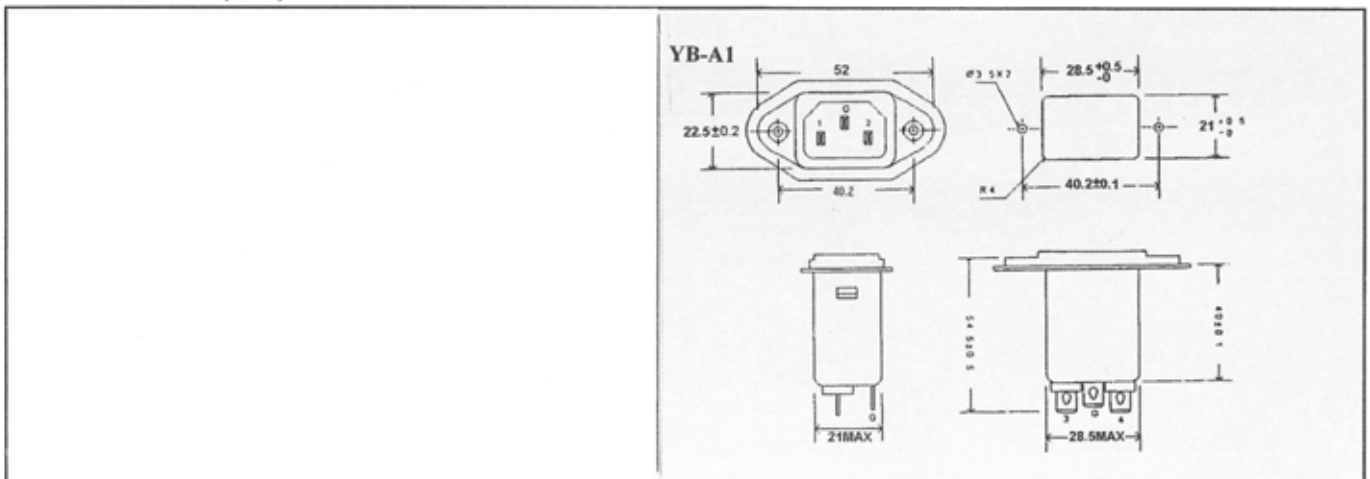
ITEM	MODEL	YB01A1/YB01A3	YB03A1/YB03A3	YB06A1/YB06A3	YB10A1/YB10A3
RATED VOLTAGE		250V AC	250V AC	250V AC	250V AC
RATED CURRENT		1A	3A	6A	10A
LEAK CURRENT		0.8mA MAX 250V,50HZ	0.8mA MAX 250V,50HZ	0.8mA MAX 250V,50HZ	0.8mA MAX 250V,50HZ
TEST VOLTAGE	LINE TO LINE	1450V DC	1450V DC	1450V DC	1450V DC
	LINE TO GROUND	2250V DC	2250V DC	2250V DC	2250V DC
INSULATION RESISTANCE		100MΩ MIN 250V DC	100MΩ MIN 250V DC	100MΩ MIN 250V DC	100MΩ MIN 250V DC
DIRECT CURRENT RESISTANCE		0.5Ω MAX	0.2Ω MAX	0.15Ω MAX	0.1Ω MAX
TEMPERATURE RISE		30°C MAX	30°C MAX	30°C MAX	30°C MAX
OPERATING TEMPERATURE		-25 ~ +85°C	-25 ~ +85°C	-25 ~ +85°C	-25 ~ +85°C
ATTENUATION	NORMAL MODE 25db MIN	0.50 ~ 45MHZ	0.60 ~ 50MHZ	0.80 ~ 50MHZ	1.20 ~ 50MHZ
	COMMON MODE 25dbMIN	0.10 ~ 40MHZ	0.15 ~ 50MHZ	0.40 ~ 50MHZ	1.40 ~ 50MHZ



## NOISE ATTENUATION ( ——— NORMAL MODE, ——— COMMON MODE )



## DIMENSION(mm)





## Appliance inlet Type C20F with 20 A mains filter

for standard or  
medical applications



### Standards

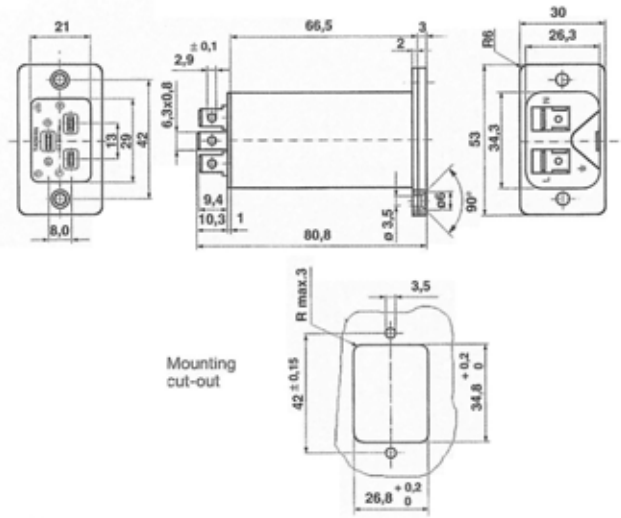
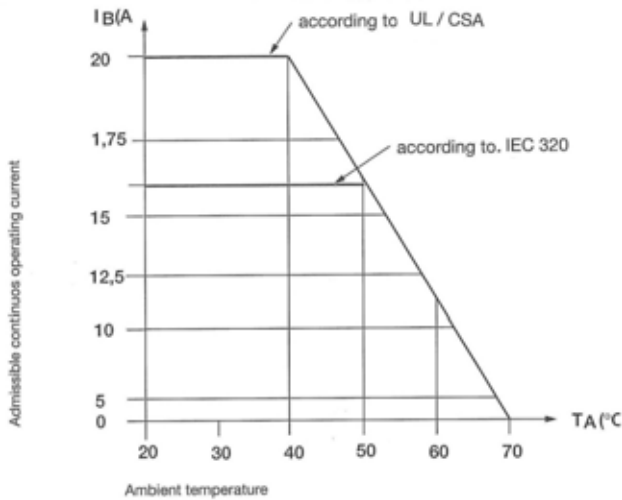
EN 60320-1, IEC 939, DIN VDE 0565 T.3,  
CSA C22.2/8, UL 1283  
RFI filter is tested according to EN 133200  
The RFI filter is suitable for the use in equipment according to  
EN 60950/IEC 950 /

C 20

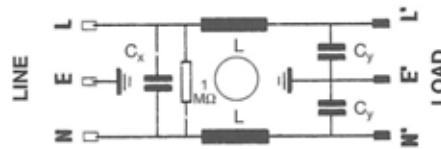


65 °C

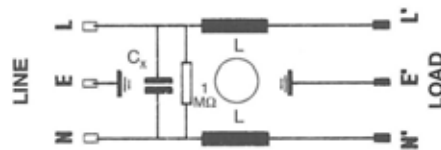
Derating curve



### Standardversion



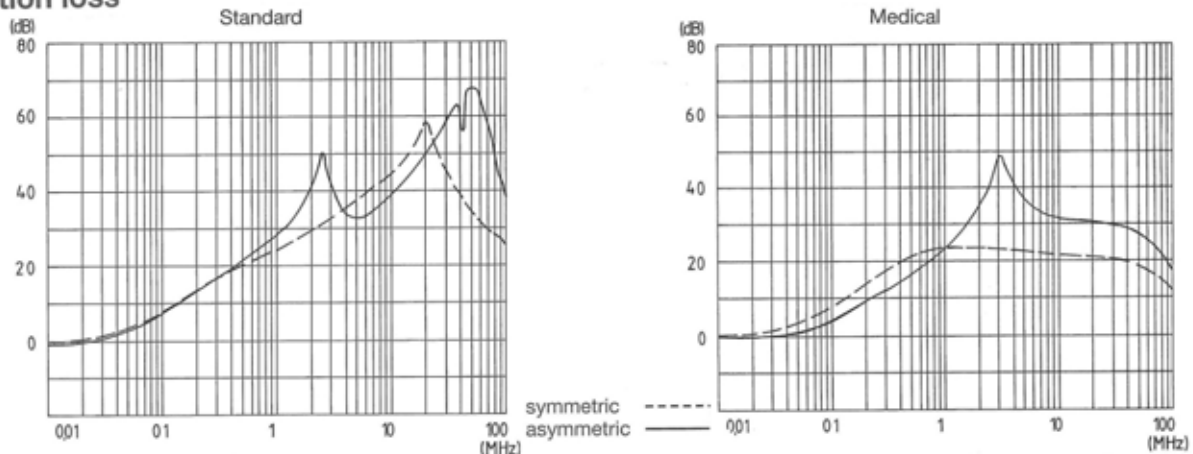
### Medicalversion



### Approvals

- VDE (16 A/250 V AC)
- UL (20 A/125 V AC)
- CSA (20 A/125 V AC)

### Attenuation loss



Order No.	Type	I <sub>n</sub> (A) T <sub>a</sub> 40 °C T <sub>v</sub> 40 °C	U <sub>n</sub> (V)	Max. leakage curr. 250 V/50 Hz	C <sub>x</sub> (nF)	C <sub>y</sub> (nF)	L (2x) (mH)	Dielectric Strength	
								L,N→E	L→N
C20F.0001	Standard	20 / 16*	up to 250 V max 50/60 HZ	< 0,5 mA	100	2,2	0,3	> 1,5 KV (50 Hz, 1 Min.)	> 1,5 KV (50 Hz, 1 Min.)
C20F.0002	Medical	20 / 16*	up to 250 V max 50/60 HZ	< 5 μ A	100	-	0,3	> 1,5 KV (50 Hz, 1 Min.)	> 1,5 KV (50 Hz, 1 Min.)

# YL-T1 SERIES

## FEATURES:

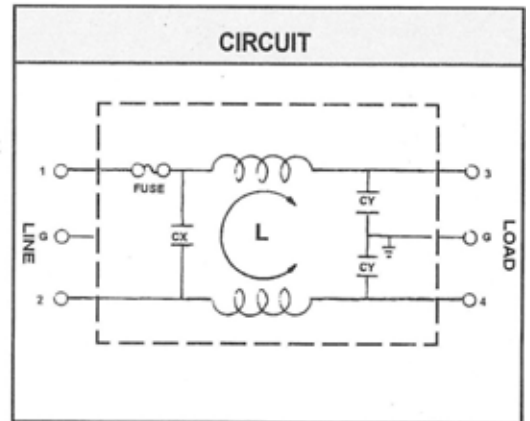
- General purpose filter with a fuse holder providing effective emi suppression of both line - to -line and line-to-ground noise.
- 250 faston terminals
- All parts are approved by UL, CSA, VDE, SEMKO, NEMKO, DEMKO and FIMKO.



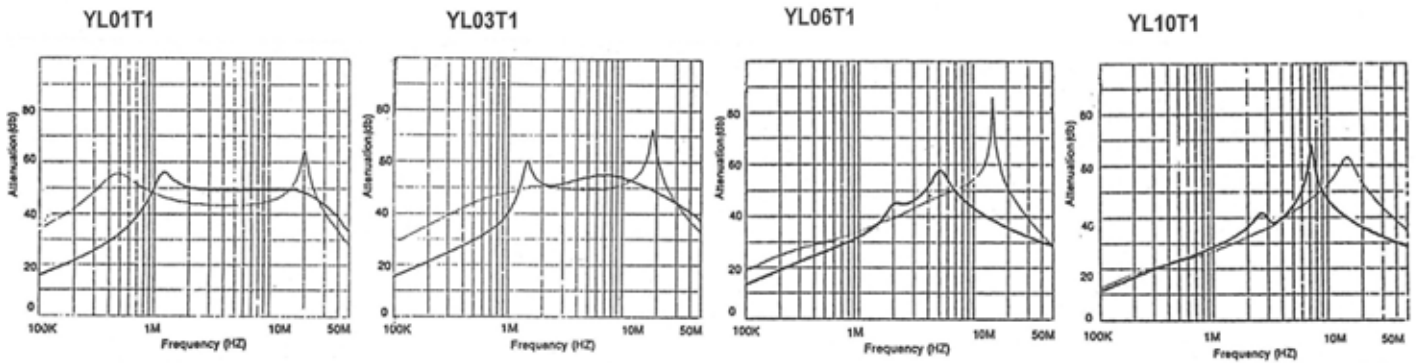
YL-T1

## SPECIFICATIONS

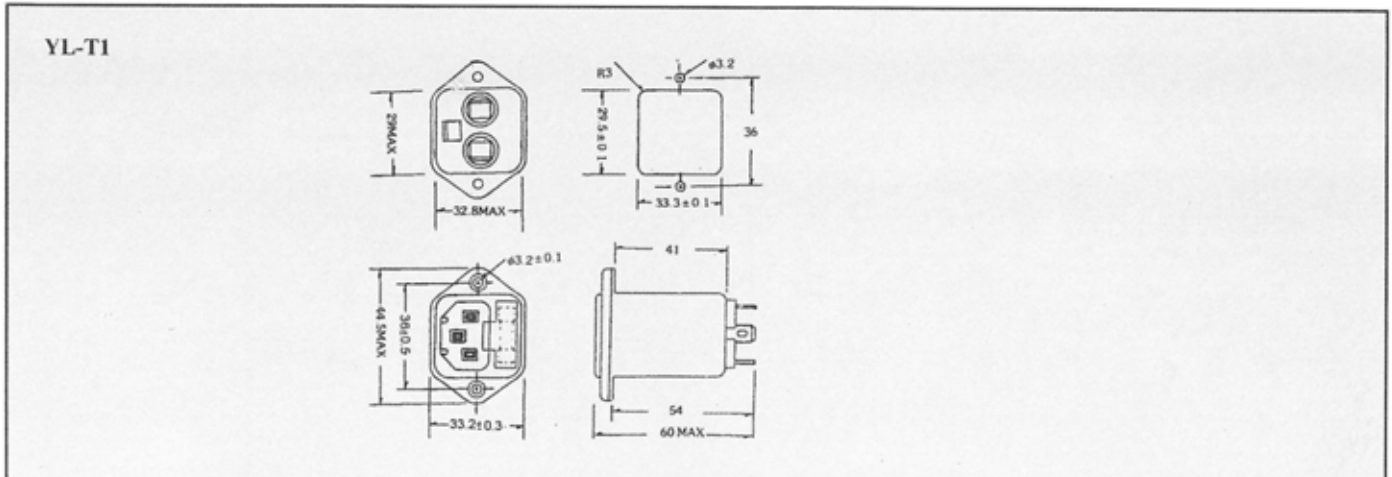
ITEM	MODEL	YL01T1	YL03T1	YL06T1	YL10T1
RATED VOLTAGE		250V AC	250V AC	250V AC	250V AC
RATED CURRENT		1A	3A	6A	10A
LEAK CURRENT		0.8mA MAX 250V,50HZ	0.8mA MAX 250V,50HZ	0.8mA MAX 250V,50HZ	0.8mA MAX 250V,50HZ
TEST VOLTAGE	LINE TO LINE	1450V DC	1450V DC	1450V DC	1450V DC
	LINE TO GROUND	2250V DC	2250V DC	2250V DC	2250V DC
INSULATION RESISTANCE		100MΩ MIN 250V DC	100MΩ MIN 250V DC	100MΩ MIN 250V DC	100MΩ MIN 250V DC
DIRECT CURRENT RESISTANCE		0.5Ω MAX	0.2Ω MAX	0.15Ω MAX	0.1Ω MAX
TEMPERATURE RISE		30°C MAX	30°C MAX	30°C MAX	30°C MAX
OPERATING TEMPERATURE		-25 ~ +85°C	-25 ~ +85°C	-25 ~ +85°C	-25 ~ +85°C
ATTENUATION	NORMAL MODE 25db MIN	0.40 ~ 50MHZ	0.50 ~ 50MHZ	0.80 ~ 40MHZ	1.20 ~ 50MHZ
	COMMON MODE 25dbMIN	0.10 ~ 45MHZ	0.13 ~ 50MHZ	0.50 ~ 47MHZ	1.50 ~ 50MHZ



## NOISE ATTENUATION ( — NORMAL MODE, — COMMON MODE )



## DIMENSION





## Power entry modules Type 5200

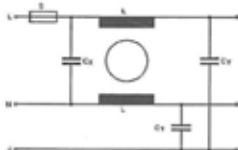
with mains filter for standard  
and medical applications  
with fuseholder  
and spare fuse-case



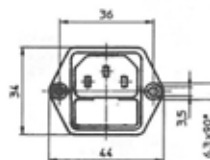
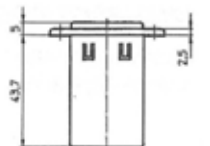
Screw-on mounting



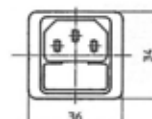
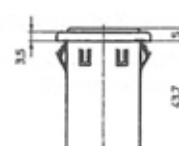
Snap-in mounting



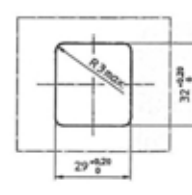
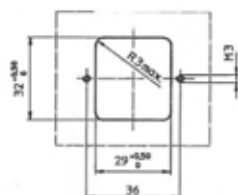
Screw-on mounting



Snap-in mounting



Mounting hole



### Technical data

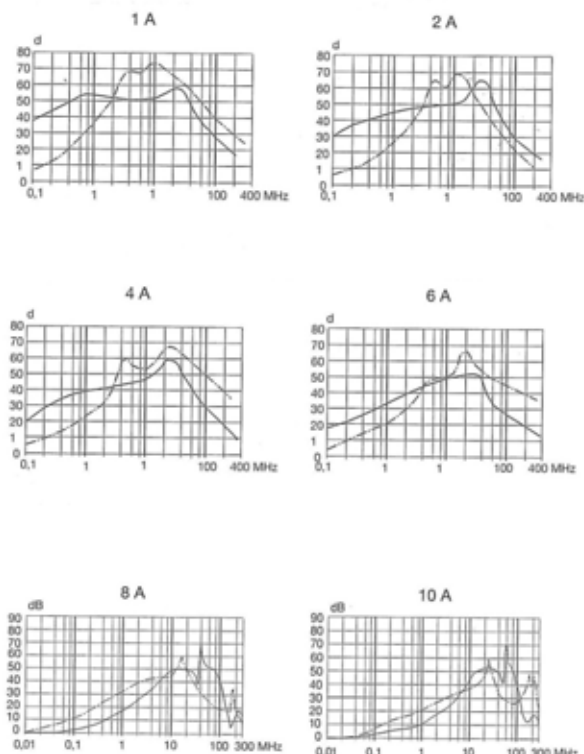
- Plug removal necessary for fuse-link replacement
- Short mains filter for universal use in equipment and instruments to protection class I
- Current ratings 1, 2, 4, 6, 8 or 10 A / 250 V AC
- Appliance inlet protection class I
- Shock-safe fuseholder 1-pole for fuse-links 5 x 20 mm
- Spare fuse-link case
- Nichrome steel shield
- Quick connect terminals 6,3 x 0,8 mm (brass tin-plated)
- Screw-on mounting from front or rear or snap-in mounting for panels 0,8–3 mm
- Ambient temperature  $T_a$  -25 to +70 °C
- Admissible power acceptance  $P_h$  in function of  $T_a$
- Socket of thermoplastic UL 94V-0

### Approvals

- SEV (1-10\* A/250 V AC)
  - VDE (1-10\* A/250 V AC)
  - SEMKO (1-10\* A/250 V AC)
  - UL (1-10 A/250 V AC)
  - CSA (1-10 A/250 V AC)
- \* 8 and 10 A Version pending

### Standards

EN 60320-1, IEC 60320-1, IEC 60939, EN 133200, CSA C22.2/8, UL 1283  
The RFI filter is suitable for the use in equipment according to EN 60950/IEC 60950



symmetric -----  
asymmetric \_\_\_\_\_

### Order No. (for standard filter)

Screw-on	Snap-in 0,8–3 mm	$I_n$ (A) $T_a$ 45 °C/ $T_u$ 45 °C	$U_n$ (V)	Max. leakage curr. (mA) 250 V/50 Hz	$C_{x2}$ (nF)	$C_y$ (nF)	L (2x) (mH)	Test voltage	
								L,N→E	L→N
5200.0123.1 (5200-1-23)	5200.0143.1 (5200-1-43)	1	up to 250 V max. 50/60 Hz	< 0,5	47	2,2	11	2700 V DC 2 sec. / 2 Sek.	1075 V DC 2 sec. / 2 Sek.
5200.0223.1 (5200-2-23)	5200.0243.1 (5200-2-43)	2		< 0,5	47	2,2	4		
5200.0423.1 (5200-4-23)	5200.0443.1 (5200-4-43)	4		< 0,5	47	2,2	1,6		
5200.0623.1 (5200-6-23)	5200.0643.1 (5200-6-43)	6		< 0,5	47	2,2	0,7		
5200.0823.1 (5200-8-23)	5200.0843.1 (5200-8-43)	8		< 0,5	47	2,2	0,6		
5200.1023.1 (5200-10-23)	5200.1043.1 (5200-10-43)	10		< 0,5	47	2,2	0,4		

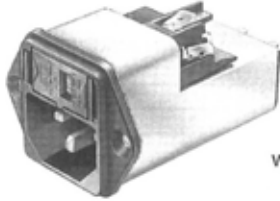
Suitable plug connectors for cable connection 4300.0602/0606

Cord retaining clamp 0888.0004

Power entry modules with mains filter for medical application see page 19.

# Power entry modules Type KFA

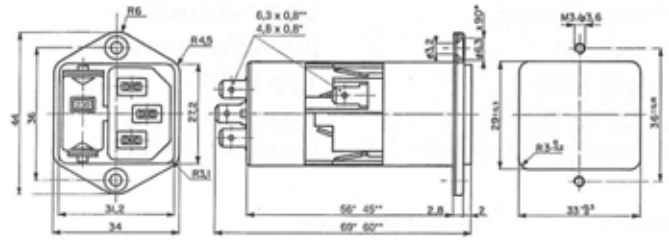
with mains filter for standard and medical applications with fuseholder with or without voltage selector



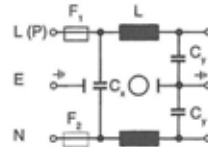
with voltage selector



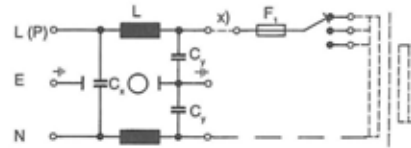
without voltage selector



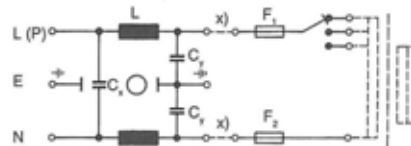
\* with voltage selector  
\*\* without voltage selector



without voltage selector



1-pole with voltage selector



2-pole with voltage selector

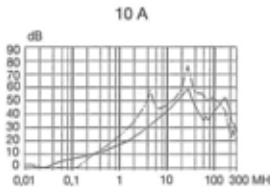
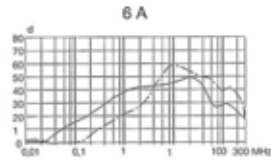
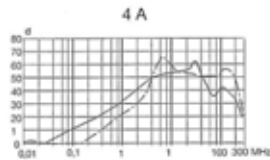
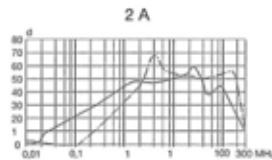
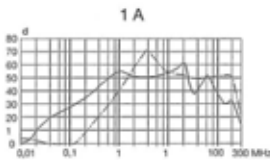
\*) External connections to be made by customer (solder terminals)

### Technical data

- Appliance inlet protection class I, pin temperature 70 °C
- Shock-safe fuseholder 1- or 2-pole for fuse-links 5 x 20 mm
- Plug removal necessary for fuse-link replacement
- With or without step switch voltage selector, 3 positions
- With an integral mains filter for 1, 2, 4, 6, or 10 A / 250 V AC
- Quick connect terminals 4,8 x 0,8 mm with voltage selector 6,3 x 0,8 mm without voltage selector
- Ambient temperature  $T_a$  -25 to +70 °C
- Admissible power acceptance  $P_n$  in function of  $T_a$  see page 266
- Socket of thermoplastic UL 94V-0

### Approvals / Approbationen

- SEV (1-10\* A/250 V AC)
  - VDE (1-10\* A/250 V AC)
  - SEMKO (1-10\* A/250 V AC)
  - UL (1-10\* A/250 V AC)
  - CSA (1-10\* A/250 V AC)
  - CS (1-4 A/250 V AC)
- \* 10 A version pending



symmetric - - - - -  
asymmetric ————

### Standards

EN 60320-1, IEC 60320-1, IEC 60939, EN 133200, DIN VDE 0565 T.3, CSA C22.2/8, UL 1283  
The RFI filter is suitable for the use in equipment according to EN 60950/IEC 60950

Order No. Socket (for standard filter) fuse-drawer must be ordered separately

Fuseholder 1-pole	2-pole	Voltage selector		$I_n$ (A) $T_a$ 40 °C/ $T_u$ 40 °C	$U_n$ (V)	Max. leakage curr.			Test voltage		
		without	with (max. 3 pos.)			(mA) 250 V/50 Hz	$C_{x2}$ (nF)	$C_y$ (nF)	L (2x) (mH)	L,N→E	L→N
4301.5011	4301.5001	•		1	up to 250 V max. 50/60 Hz	< 0,5	68	2,2	10	2 kV 50 Hz 2 sec.	1625 V DC 2 sec.
4301.5012	4301.5002	•		2		< 0,5	68	2,2	4		
4301.5013	4301.5003	•		4		< 0,5	68	2,2	1,5		
4301.5014	4301.5004	•		6		< 0,5	68	2,2	0,8		
4301.5015	4301.5005	•		10		< 0,5	68	2,2	0,3		
4301.5051	4301.5041		•	1		< 0,5	68	2,2	10		
4301.5052	4301.5042		•	2		< 0,5	68	2,2	4		
4301.5053	4301.5043		•	4		< 0,5	68	2,2	1,5		
4301.5054	4301.5044		•	6		< 0,5	68	2,2	0,8		
4301.5055	4301.5045		•	10		< 0,5	68	2,2	0,3		

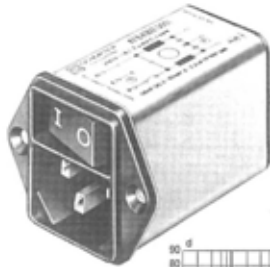
Order No. Fuse drawer see page  
Suitable plug connectors for cable connection 4300.0602/0606  
Cord retaining clamp 0888.0004

Power entry modules with mains filter for medical application see page 19.

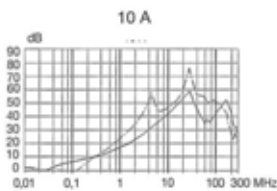
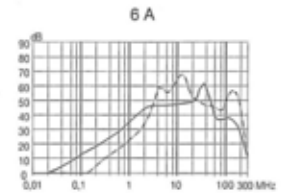
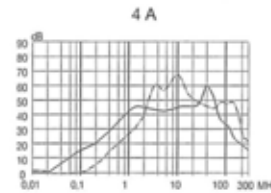
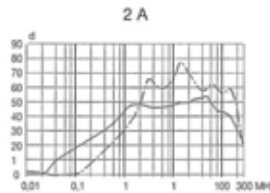
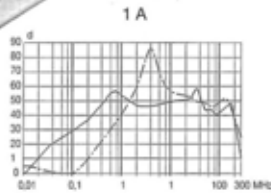
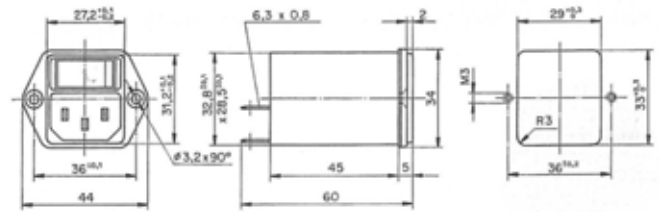
## Power entry modules

### Type KFB I

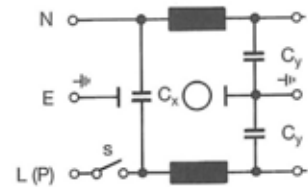
with mains filter  
with On/Off switch 1-pole



C 14  
70 °C



symmetric - - - - -  
asymmetric ————



#### Technical data

- Appliance inlet protection class I, Pin temperature 70 °C
- On/Off switch 1-pole (SPST), non-illuminated
- With an integral mains filter for 1, 2, 4, 6 or 10A / 250 V-
- Quick connect terminals 6,3 x 0,8 mm (brass tin-plated)
- Inrush current (capacitive): 20 A < 5 ms

#### Approvals

SEV	(1, 2, 4(3), 6(3))	10(3)** A/250 V AC
VDE	(1, 2, 4(3), 6(3))	10(3)** A/250 V AC
SEMKO	(1, 2, 4(3), 6(3))	10(3)** A/250 V AC
UL	(1, 2, 4, 6)	10(3)** A/250 V AC
CSA	(1, 2, 4, 6)	10(3)** A/250 V AC
CS	(1, 2, 4)	A/250 V AC

(3) for motor

\*\*pending

#### Standards

EN 60320-1, IEC 60320-1, EN 133200, CSA C22.2/8, UL 1283  
The RFI filter is suitable for the use in equipment according to  
EN 60950/IEC 60950

#### Order No. Socket

Switch	I <sub>n</sub> (A) T <sub>a</sub> 45°C*	U <sub>n</sub> (V)	Max. leakage curr (mA) 250V/50Hz	C <sub>x2</sub> (nF)	C <sub>y</sub> (nF)	L (2x) (mH)	Test voltage	
							L <sub>N</sub> →E	L→N
1-pole								
4302.5001	1	up to 250 V max. 50 / 60 Hz	< 0,5	68	2,2	10	2 kV 50 Hz 2 sec.	1625 V DC 2 sec.
4302.5002	2		< 0,5	68	2,2	4		
4302.5003	4		< 0,5	68	2,2	1,5		
4302.5004	6		< 0,5	68	2,2	0,8		
4302.5005	10		< 0,5	68	2,2	0,3		

\* VDE T<sub>a</sub> 40 °C

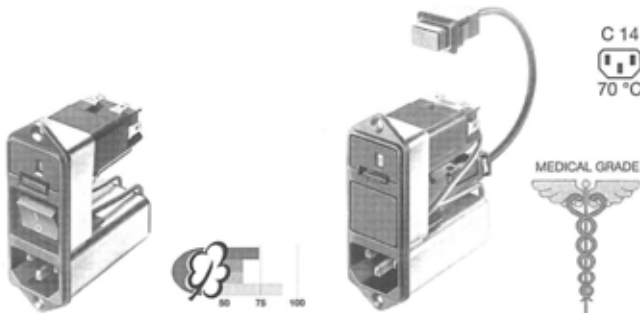
Suitable plug connectors for cable connection 4300.0602/0606

Cord retaining clamp      insulation cover  
0888.0004                      0859.0047



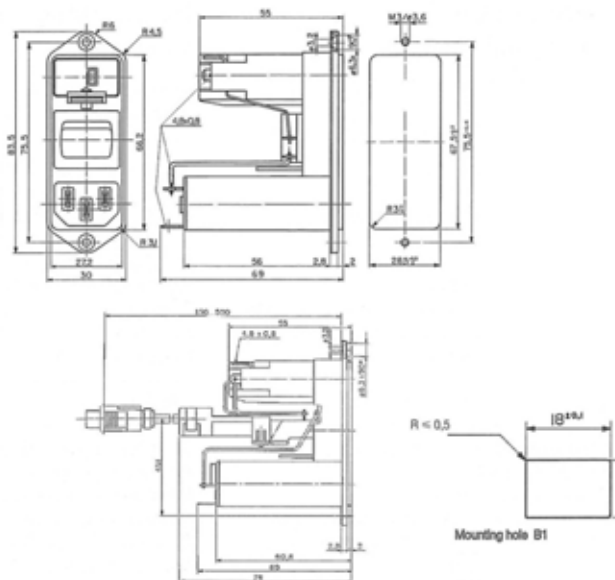
# Power entry modules with mains filter Type CD

with fuseholder,  
voltage selector and On/Off  
switch with or without  
Bowden cable actuation

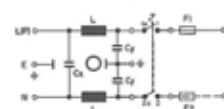


### Technical data

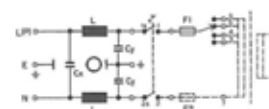
- Appliance inlet protection class I, Pin temperature 70 °C
- Shock-safe fuseholder 1- or 2-pole for fuse-links 5 x 20 mm or 6,3 x 32 mm (1/4" x 1 1/4")
- Extra safe fuseholder can only be extracted with the aid of a tool. Meets medical standards IEC 601-1, BS 5724 part 1, DIN/VDE 0750 part 1
- With or without step switch voltage selector, 4 positions
- On/Off switch 2-pole (DPST), non-illuminated with or without Bowden cable actuation
- With an integral mains filter for 1, 2, 4, 6 or 10 A / 250 V AC standard or medical
- Quick connect terminals 4,8 x 0,8 mm (brass tin-plated)
- Ambient temperature  $T_a$  -25 to +70 °C
- Admissible power acceptance  $P_1$  in function of  $T_a$  see page 266
- Inrush current (capacitive): 70 A 3-4 ms (see page 208)



without voltage selector



with voltage selector



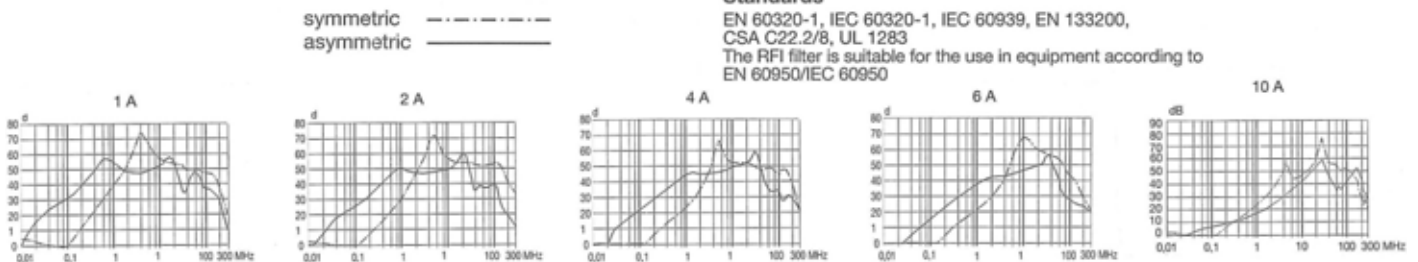
### Approvals

- SEV (1-10(4)\* A/250 V AC)
  - VDE (1-10(4)\* A/250 V AC)
  - SEMKO (1-10(4)\* A/250 V AC)
  - UL (1-10\* A/250 V AC)
  - CSA (1-10\* A/250 V AC)
  - CS (1-4 A/250 V AC)
- (4) for motor

\* 10 A version pending

### Standards

EN 60320-1, IEC 60320-1, IEC 60939, EN 133200, CSA C22.2/8, UL 1283  
The RFI filter is suitable for the use in equipment according to EN 60950/IEC 60950



Order No. Socket for standard filter (fuse-drawer must be ordered separately) Order No. fuse-drawer see page 11.

Fuseholder 1-pole	2-pole	Voltage selector without with	Rocker switch	Bowd. cable actuation	$I_n$ (A) $T_a$ 40 °C	$U_n$ (V)	Max. leakage current $I_{l1}$ (nA) 250 V/50 Hz	$C_{x2}$ (nF)	$C_y$ (nF)	L (2x) (mH)	Test voltage	
											L <sub>N-E</sub>	L <sub>-N</sub>
CD11.1501.151	CD14.1101.151	•	•	•	1	up to/ bis 250 V max. 50/ 60 Hz	< 0,5	68	2,2	1	2 kV 50 Hz 2 sec.	1625 V DC 2 sec.
CD21.1501.151	CD24.1101.151	•	•	•	2		< 0,5	68	2,2	4		
CD31.1501.151	CD34.1101.151	•	•	•	4		< 0,5	68	2,2	1,5		
CD41.1501.151	CD44.1101.151	•	•	•	6		< 0,5	68	2,2	0,8		
CD61.1501.151	CD64.1101.151	•	•	•	10		< 0,5	68	2,2	0,3		
CD11.4501.151	CD14.4101.151	•	•	•	1		< 0,5	68	2,2	10		
CD21.4501.151	CD24.4101.151	•	•	•	2		< 0,5	68	2,2	4		
CD31.4501.151	CD34.4101.151	•	•	•	4		< 0,5	68	2,2	1,5		
CD41.4501.151	CD44.4101.151	•	•	•	6		< 0,5	68	2,2	0,8		
CD61.4501.151	CD64.4101.151	•	•	•	10		< 0,5	68	2,2	0,3		
CD11.4599.151	CD14.4199.151	•	•	•	1		< 0,5	68	2,2	10		
CD21.4599.151	CD24.4199.151	•	•	•	2		< 0,5	68	2,2	4		
CD31.4599.151	CD34.4199.151	•	•	•	4		< 0,5	68	2,2	1,5		
CD41.4599.151	CD44.4199.151	•	•	•	6		< 0,5	68	2,2	0,8		

Order details and description for Bowden cable see page  
Suitable plug connectors for cable connection 4300.0602/0606  
Cord retaining clamp 0888.0005 cover 0859.0077  
Power entry modules with mains filter for medical application 19.

# Fusedrawers

## Power entry modules Type KFA

Order No. Fuse-drawer Fingergrip and Extra-Safe

Voltage markings	Type			1-pole + spare fuse case	2-pole with shorting bar in the neutral side
		1-pole	2-pole		
„XX“ see table below	Fingergrip	4301.1214.XX	4301.1014.XX	4301.2814.XX	4301.3536.XX
	Extra-Safe	4301.1224.XX	4301.1024.XX	4301.2824.XX	4301.3537.XX
without voltage selector	Fingergrip	4301.1405	4301.1401	4301.1409	4301.1413
	Extra-Safe	4301.1407	4301.1403	4301.1411	4301.1415

Index	Voltage markings / terminal markings			
	1	2	3	4
01	110	150	220	-
02	120	-	240	-
03	110	-	220	-
04	115	-	220	-
05	110	-	230	-
06	115	-	230	-
07	100	110	220	240
08	100	120	220	240
09	110	-	117	-
10	220	-	240	-
11	120	220	240	-
12	110	220	240	-
13	115	220	240	-
14	-	-	-	-
15	100	120	220	-
16	50 Hz	-	60 Hz	-
17	220	-	110	-
18	110	240	220	-
19	117	220	240	-
20	100	110	127	230
21	110	120	220	-
22	110	220	230	-
23	100	115	220	240
24	115	230	240	-

The fuse-drawer Extra-Safe can only be removed when the mains outlet is removed

Other voltage values on request

## Power entry modules with mains filter Type CD

Order No. Fuse-drawer standard Fingergrip and Extra-Safe

Voltage markings/ Terminal markings	Type	5 x 20 mm		2-pole with shortingbar in the neutral side	6,3 x 32 mm (1/4" x 1 1/4")		2-pole with shorting bar in the neutral side
		1-pole	2-pole		1-pole	2-pole	
1 2 3 4 KEC							
3 4 5 6 KD							
„XX“ see table below siehe Tabelle unten	Fingergrip	4303.2114.XX	4303.2014.XX	4303.2036.XX	4303.2614.XX	4303.2514.XX	4303.2536.XX
	Extra-Safe	4303.2124.XX	4303.2024.XX	4303.2037.XX	4303.2624.XX	4303.2524.XX	4303.2537.XX
without voltage selector	Fingergrip	4303.2406	4303.2401	4303.2411	4303.2906	4303.2901	4303.2911
ohne Spannungswähler	Extra-Safe	4303.2408	4303.2403	4303.2413	4303.2908	4303.2903	4303.2913

Index	Voltage markings / terminal markings					KEC KD
	1	2	3	4		
XX	3	4	5	6		
00	-	-	-	-		
01	100	120	220	240		
02	110	150	220	-		
03	110	-	220	-		
04	110	220	240	-		
05	115	-	230	-		
06	117	220	240	-		
07	100	117	220	-		
08	110 V	-	220 V	-		
09	220	-	240	-		
10	115	220	240	-		
11	110	120	220	240		

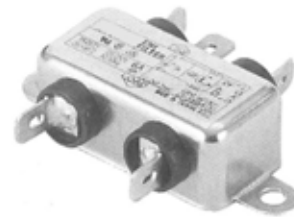
Index	Voltage markings / terminal markings					KEC KD
	1	2	3	4		
XX	3	4	5	6		
12	115	230	240	-		
13	100	110	220	240		
14	100	117	220	240		
15	100	115	230	-		
16	100	120	230	240		
17	115	120	230	240		
18	115	-	240	-		
19	220	120	240	230		
20	100	120	230	-		
21	100	-	220	-		
22	100	120	220	230		
23	100	110	120	-		



# YK-T1 SERIES

## FEATURES:

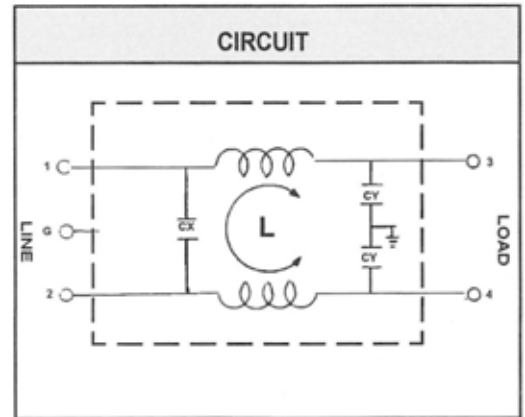
- General purpose filter providing effective emi suppression of both line - to -line and line-to-ground noise.
- Low cost
- 250 faston terminals
- All parts are approved by UL, CSA and VDE.



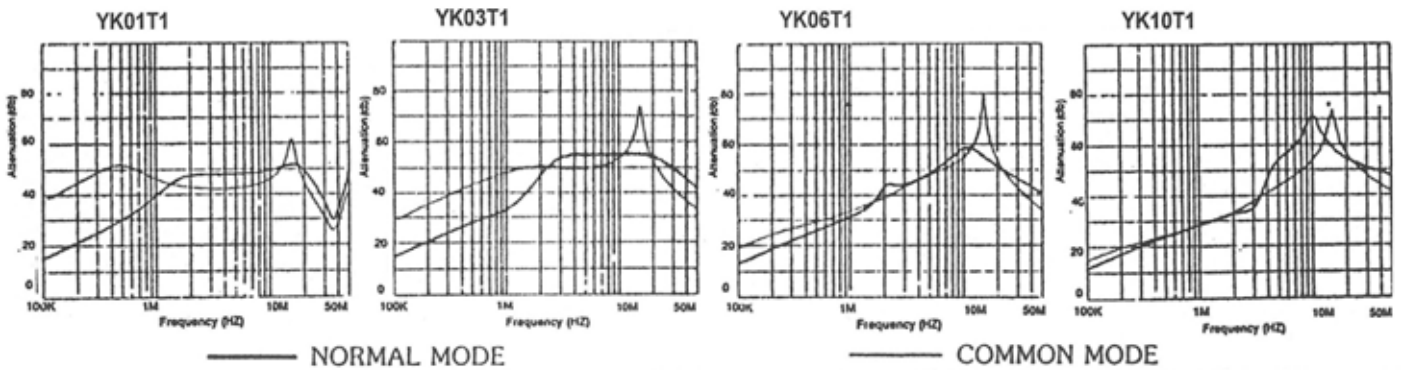
YK-T1

## SPECIFICATIONS

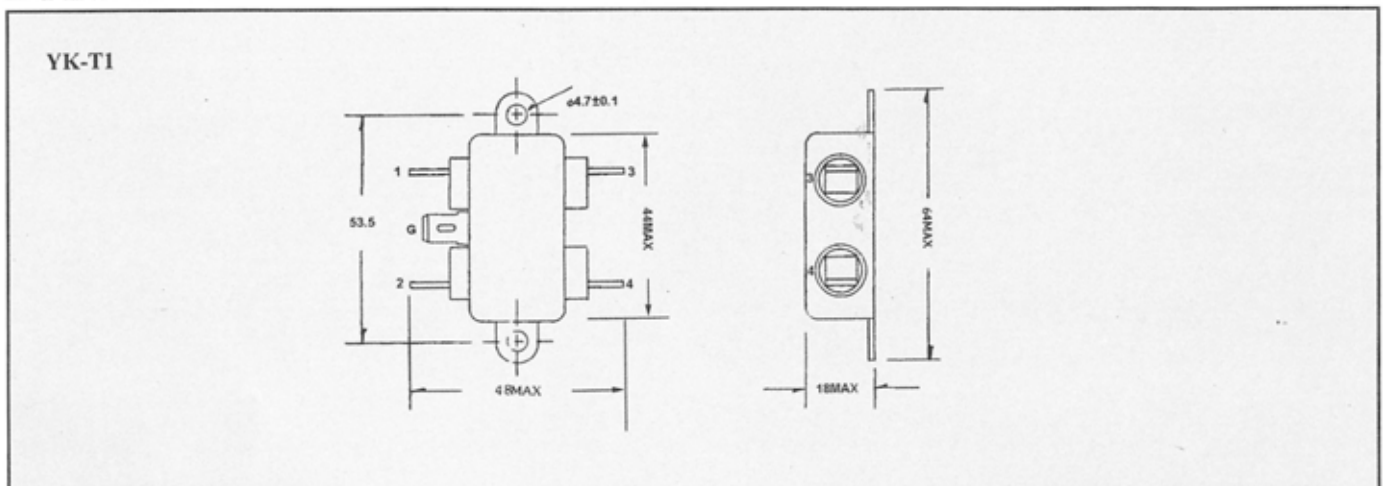
ITEM	MODEL	YK01T1	YK03T1	YK06T1	YK10T1
RATED VOLTAGE		250V AC	250V AC	250V AC	250V AC
RATED CURRENT		1A	3A	6A	10A
LEAK CURRENT		0.8mA MAX 250V,50HZ	0.8mA MAX 250V,50HZ	0.8mA MAX 250V,50HZ	0.8mA MAX 250V,50HZ
TEST VOLTAGE	LINE TO LINE	1450V DC	1450V DC	1450V DC	1450V DC
	LINE TO GROUND	2250V DC	2250V DC	2250V DC	2250V DC
INSULATION RESISTANCE		100MΩ MIN 250V DC	100MΩ MIN 250V DC	100MΩ MIN 250V DC	100MΩ MIN 250V DC
DIRECT CURRENT RESISTANCE		0.5Ω MAX	0.2Ω MAX	0.15Ω MAX	0.1MAX
TEMPERATURE RISE		30°C MAX	30°C MAX	30°C MAX	30°C MAX
OPERATING TEMPERATURE		-25 ~ +85°C	-25 ~ +85°C	-25 ~ +85°C	-25 ~ +85°C
ATTENUATION	NORMAL MODE 25db MIN	0.50 ~ 35MHZ	0.70 ~ 50MHZ	0.90 ~ 50MHZ	1.30 ~ 50MHZ
	COMMON MODE 25dbMIN	0.10 ~ 30MHZ	0.20 ~ 50MHZ	0.60 ~ 50MHZ	1.30 ~ 50MHZ



## NOISE ATTENUATION ( ——— NORMAL MODE, ——— COMMON MODE )



## DIMENSION



# YC-T1, YD-T4, SERIES

## FEATURES

- Superior performance controlling EMI suppression of both line-to-line and line-to-ground noise
- 250 Faston terminals(YC-T1)
- SOLDER LUG TERMINALS(YD-T4)
- All parts of YC-T1 are approved by UL and CSA
- All parts of YD-T4 are approved by UL, CSA and VDE



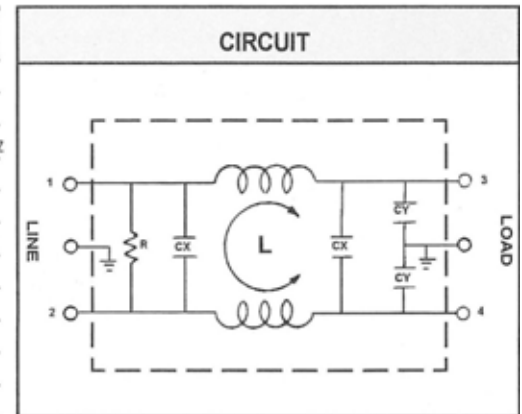
YC-T1



YD-T4

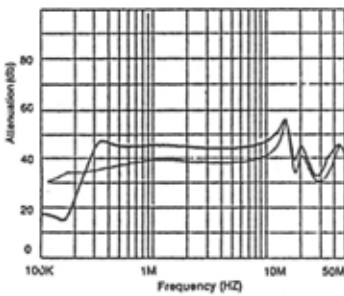
## SPECIFICATIONS

ITEM	MODEL	YC05T1/YD05T4	YC10T1/YD10T4	YC15T1/YD15T4	YC20T1/YD20T4
RATED VOLTAGE		250V AC	250V AC	250V AC	250V AC
RATED CURRENT		5A	10A	15A	20A
LEAK CURRENT		0.8mA MAX 250V,50HZ	0.8mA MAX 250V,50HZ	0.8mA MAX 250V,50HZ	0.8mA MAX 250V,50HZ
TEST VOLTAGE	LINE TO LINE	1450V DC	1450V DC	1450V DC	1450V DC
	LINE TO GROUND	2250V DC	2250V DC	2250V DC	2250V DC
INSULATION RESISTANCE		100MΩ MIN 250V DC	100MΩ MIN 250V DC	100MΩ MIN 250V DC	100MΩ MIN 250V DC
DIRECT CURRENT RESISTANCE		0.3Ω MAX	0.15Ω MAX	0.1Ω MAX	0.05Ω MAX
TEMPERATURE RISE		30°C MAX	30°C MAX	30°C MAX	30°C MAX
OPERATING TEMPERATURE		-25 ~ +85°C	-25 ~ +85°C	-25 ~ +85°C	-25 ~ +85°C
ATTENUATION	NORMAL MODE 25db MIN	0.27 ~ 45MHZ	0.36 ~ 50MHZ	0.50 ~ 50MHZ	1.60 ~ 50MHZ
	COMMON MODE 25dbMIN	0.30 ~ 40MHZ	0.67 ~ 50MHZ	1.80 ~ 50MHZ	1.80 ~ 50MHZ

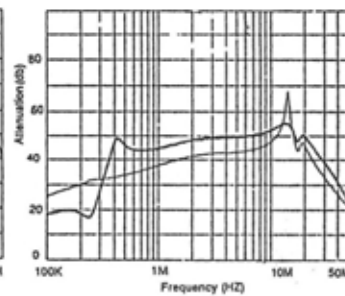


## NOISE ATTENUATION ( — NORMAL MODE, — COMMON MODE )

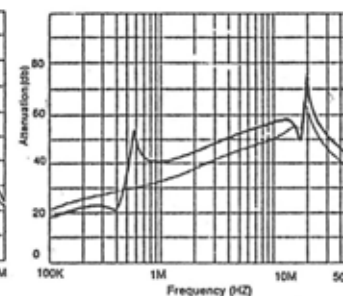
YC05T1/YD05T4



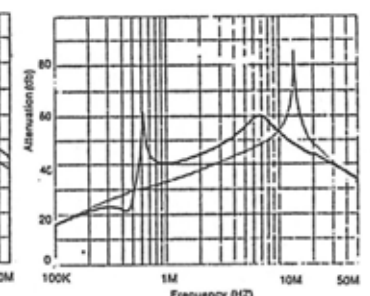
YC10T1/YD10T4



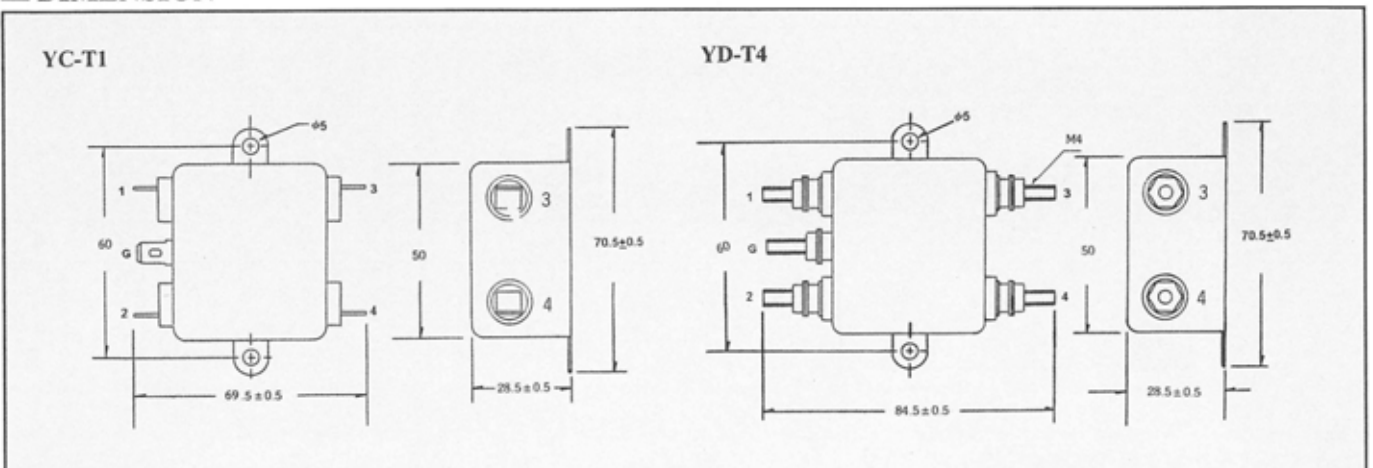
YC15T1/YD15T4



YC20T1/YD20T4



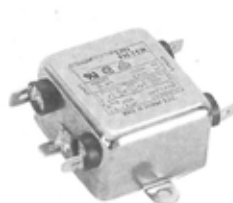
## DIMENSION



# YC-T1L2, YD-T4L2 SERIES

## FEATURES

- Two stage filters designed to provide high performance in suppressing both line-to-line and line-to-ground noise for most digital electronic equipment
- 250 Faston terminals(YC-T1L2)
- SOLDER LUG TERMINALS(YD-T4L2)
- All parts of YC-T1L2 are approved by UL AND CSA EXCEPT YC10T1L2
- All parts of YD-T4L2 are approved by UL , CSA AND VDE EXCEPT YD10T4L2



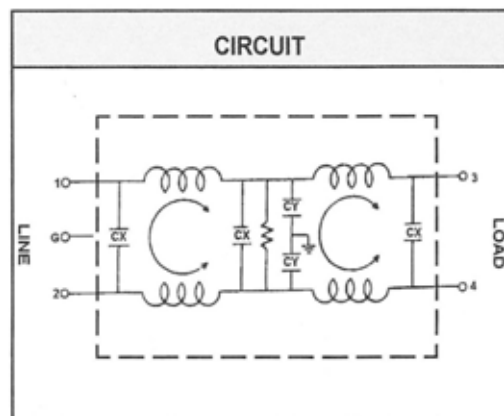
YC-T1L2



YD-T4L2

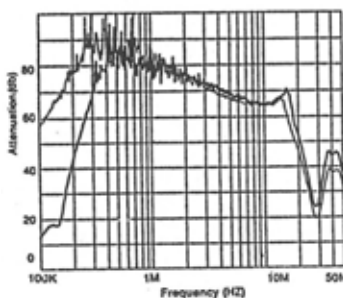
## SPECIFICATIONS

ITEM	MODEL	YC01T1L2/YD01T4L2	YC03T1L2/YD03T4L2	YC06T1L2/YD06T4L2	YC10T1L2/YD10T4L2
RATED VOLTAGE		250V AC	250V AC	250V AC	250V AC
RATED CURRENT		1A	3A	6A	10A
LEAK CURRENT		0.8mA MAX 250V,50HZ	0.8mA MAX 250V,50HZ	0.8mA MAX 250V,50HZ	0.8mA MAX 250V,50HZ
TEST VOLTAGE	LINE TO LINE	1450V DC	1450V DC	1450V DC	1450V DC
	LINE TO GROUND	2250V DC	2250V DC	2250V DC	2250V DC
INSULATION RESISTANCE		100MΩ MIN 250V DC	100MΩ MIN 250V DC	100MΩ MIN 250V DC	100MΩ MIN 250V DC
DIRECT CURRENT RESISTANCE		0.7Ω MAX	0.3Ω MAX	0.15Ω MAX	0.1Ω MAX
TEMPERATURE RISE		30°C MAX	30°C MAX	30°C MAX	30°C MAX
OPERATING TEMPERATURE		-25 ~ +85°C	-25 ~ +85°C	-25 ~ +85°C	-25 ~ +85°C
ATTENUATION	NORMAL MODE 25db MIN	0.25 ~ 15MHZ	0.40 ~ 28MHZ	0.60 ~ 30MHZ	0.85 ~ 42MHZ
	COMMON MODE 25dbMIN	0.10 ~ 15MHZ	0.18 ~ 22MHZ	0.40 ~ 25MHZ	1.00 ~ 30MHZ

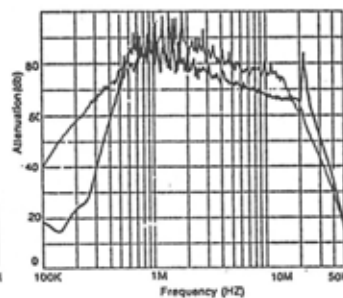


## NOISE ATTENUATION ( ——— NORMAL MODE, ——— COMMON MODE )

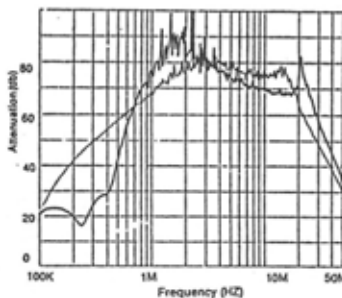
YC01T1L2/YC01T4L2



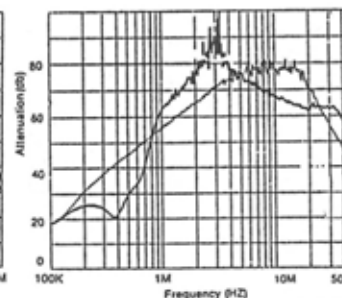
YC03T1L2/YC03T4L2



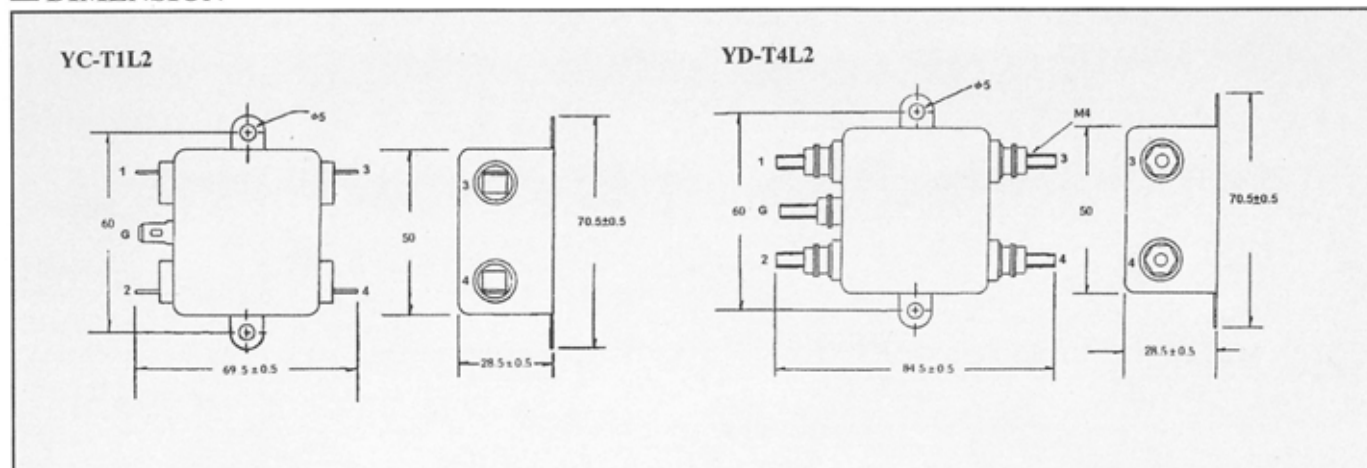
YC06T1L2/YC06T4L2



YC10T1L2/YC10T4L2



## DIMENSION





# YE-T1L2, YE-T4L2 SERIES

## FEATURES

- Two stage filters designed to provide high performance in suppressing both line-to-line and line-to-ground noise for most digital electronic equipment
- 250 Faston terminals (YE-T1L2)
- screw output terminals M-4 (YE-T4L2)
- all parts of YE-T1L2 and YE-T4L2 are approved by UL, CSA and VDE



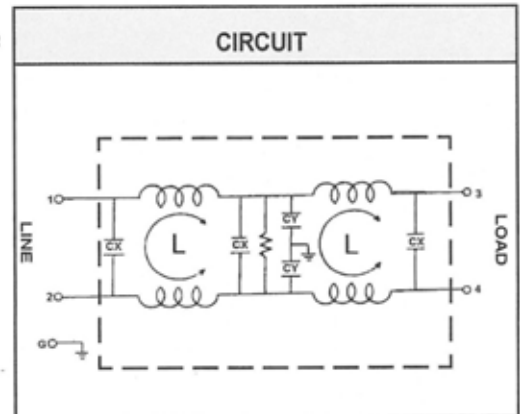
YE-T1L2



YE-T4L2

## SPECIFICATIONS

ITEM	MODEL	YE05T1L2/YE05T4L2	YE10T1L2/YE10T4L2	YE15T1L2/YE15T4L2	YE20T1L2/YE20T4L2
RATED VOLTAGE		250V AC	250V AC	250V AC	250V AC
RATED CURRENT		5A	10A	15A	20A
LEAK CURRENT		0.8mA MAX 250V,50HZ	0.8mA MAX 250V,50HZ	0.8mA MAX 250V,50HZ	0.8mA MAX 250V,50HZ
TEST VOLTAGE	LINE TO LINE	1450V DC	1450V DC	1450V DC	1450V DC
	LINE TO GROUND	2250V DC	2250V DC	2250V DC	2250V DC
INSULATION RESISTANCE		100MΩ MIN 250V DC	100MΩ MIN 250V DC	100MΩ MIN 250V DC	100MΩ MIN 250V DC
DIRECT CURRENT RESISTANCE		0.3Ω MAX	0.15Ω MAX	0.1Ω MAX	0.05Ω MAX
TEMPERATURE RISE		30°C MAX	30°C MAX	30°C MAX	30°C MAX
OPERATING TEMPERATURE		-25 ~ +85°C	-25 ~ +85°C	-25 ~ +85°C	-25 ~ +85°C
ATTENUATION	NORMAL MODE 25db MIN	0.25 - 12MHZ	0.33 - 13MHZ	0.61 - 50MHZ	0.68 - 50MHZ
	COMMON MODE 25db MIN	0.10 - 10MHZ	0.26 - 11MHZ	0.40 - 48MHZ	0.40 - 50MHZ



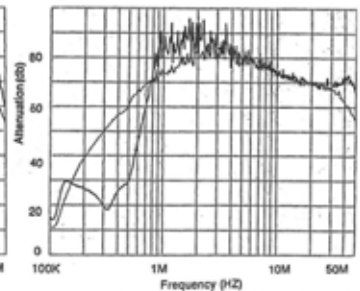
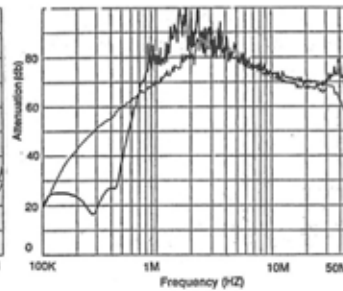
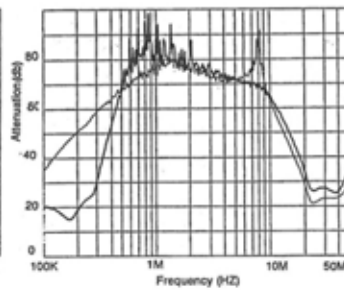
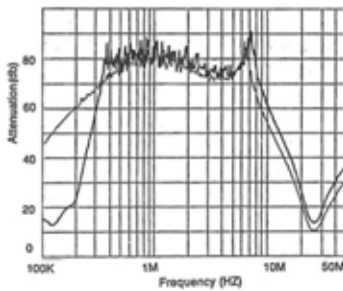
## NOISE ATTENUATION ( — NORMAL MODE, — COMMON MODE )

YE05T1L2/YE05T4L2

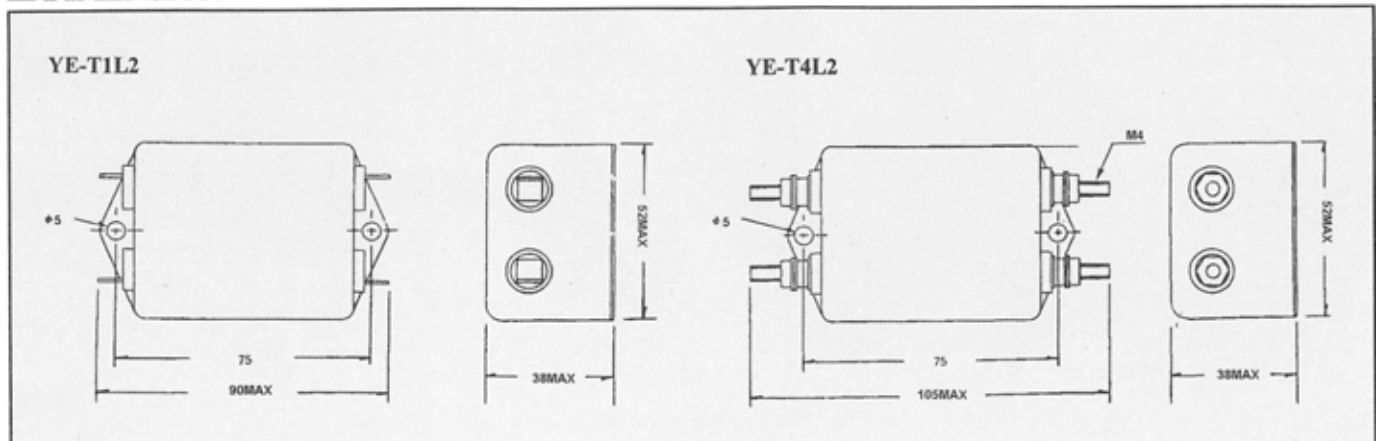
YE10T1L2/YE10T4L2

YE15T1L2/YE15T4L2

YE20T1L2/YE20T4L2



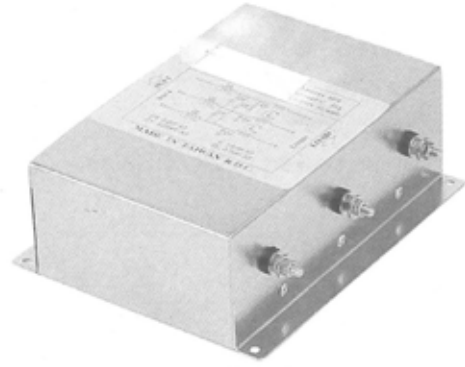
## DIMENSION



# YJ-T7 SERIES

## FEATURES:

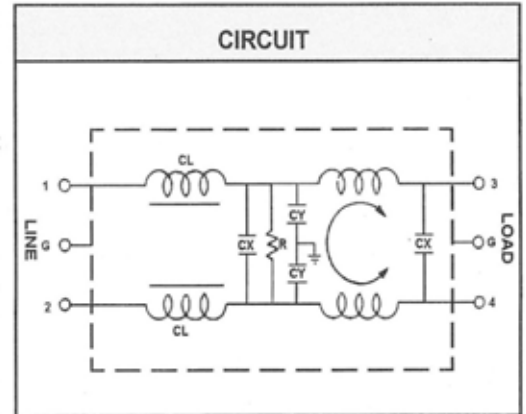
- GOOD NOISE ATTENUATION IN BOTH FORWARD AND REVERSE DIRECTIONS FOR COMMON MODE AND NORMAL MODE.
- HIGH RELIABILITY DESIGNED FOR INDUSTRIAL EQUIPMENT USAGE WITH ONE PHASES, 250V/500 VAC



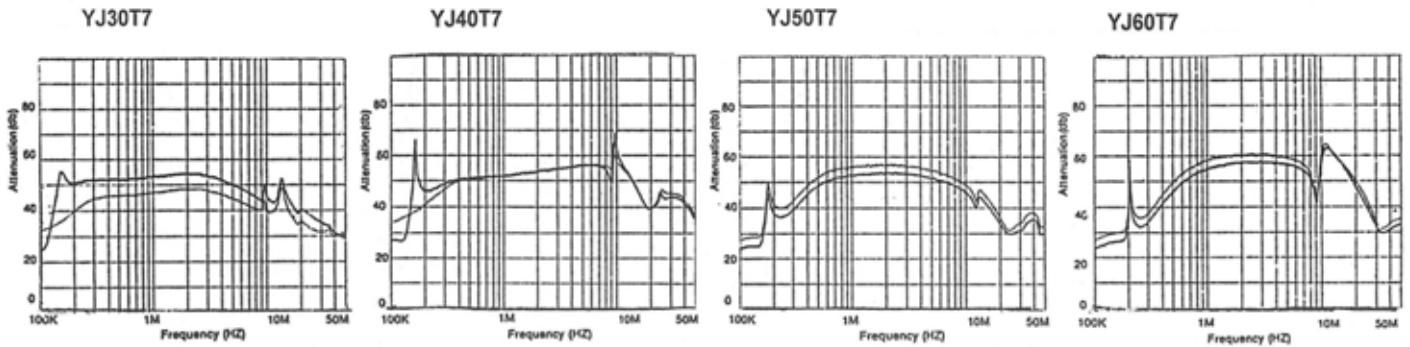
YJ-T7

## SPECIFICATIONS

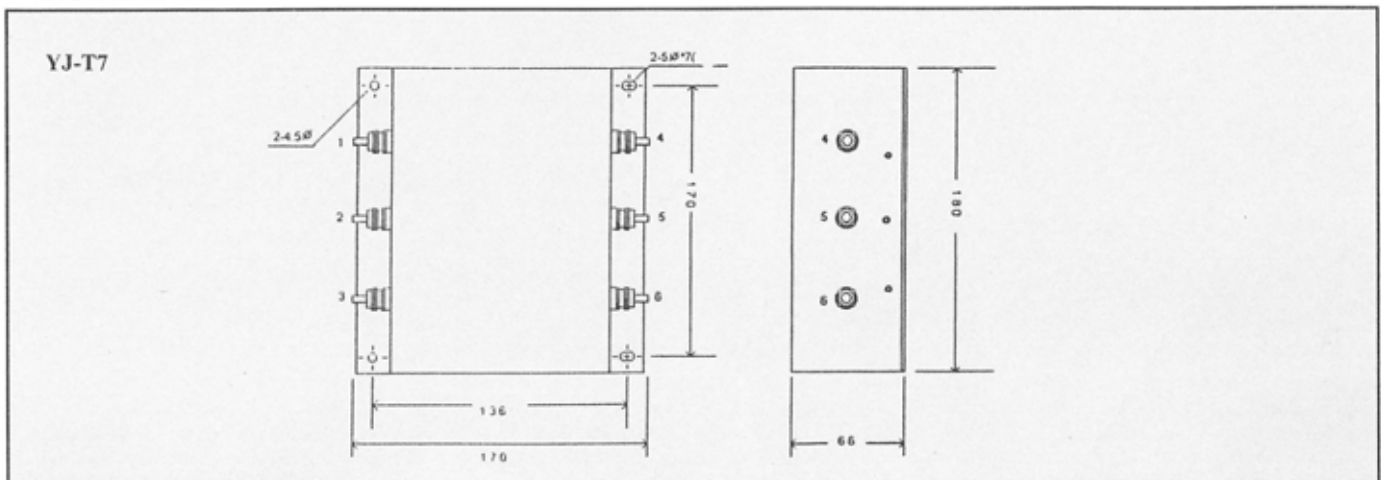
ITEM	MODEL	YJ30T7	YJ40T7	YJ50T7	YJ60T7
RATED VOLTAGE		250V AC	250V AC	250V AC	250V AC
RATED CURRENT		30A	40A	50A	60A
LEAK CURRENT		0.8mA MAX 250V,50HZ	0.8mA MAX 250V,50HZ	0.8mA MAX 250V,50HZ	0.8mA MAX 250V,50HZ
TEST VOLTAGE	LINE TO LINE	1450V DC	1450V DC	1450V DC	1450V DC
	LINE TO GROUND	2250V DC	2250V DC	2250V DC	2250V DC
INSULATION RESISTANCE		100MΩ MIN 250V DC	100MΩ MIN 250V DC	100MΩ MIN 250V DC	100MΩ MIN 250V DC
DIRECT CURRENT RESISTANCE		0.08Ω MAX	0.06Ω MAX	0.04Ω MAX	0.03MAX
TEMPERATURE RISE		30°C MAX	30°C MAX	30°C MAX	30°C MAX
OPERATING TEMPERATURE		-25 ~ +85°C	-25 ~ +85°C	-25 ~ +85°C	-25 ~ +85°C
ATTENUATION	NORMAL MODE 25db MIN	0.80 ~ 45MHZ	0.80 ~ 50MHZ	0.80 ~ 50MHZ	1.00 ~ 50MHZ
	COMMON MODE 25dbMIN	0.10 ~ 40MHZ	0.20 ~ 50MHZ	0.40 ~ 50MHZ	1.00 ~ 50MHZ



## NOISE ATTENUATION ( ——— NORMAL MODE, ——— COMMON MODE )



## DIMENSION

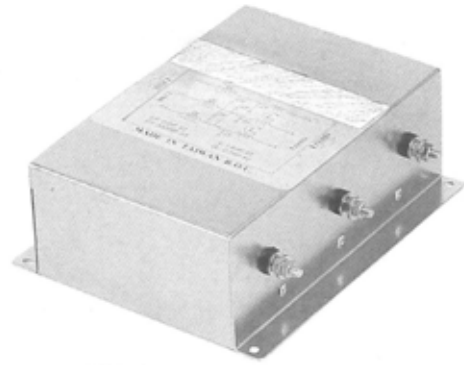




# YH-T4 SERIES

## FEATURES:

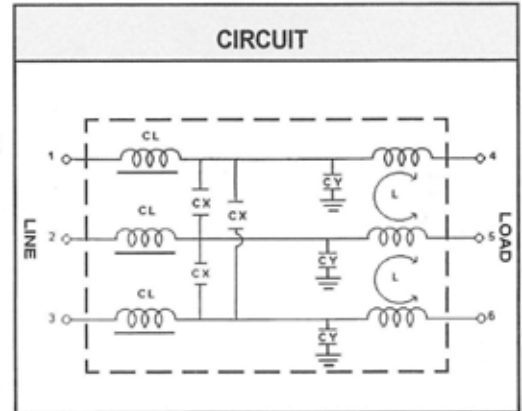
- Good noise attenuation in both forward and reverse directions for common mode and normal mode.
- High reliability designed for industrial equipment usage with 3 phases, 250v/500 vac



YH-T4

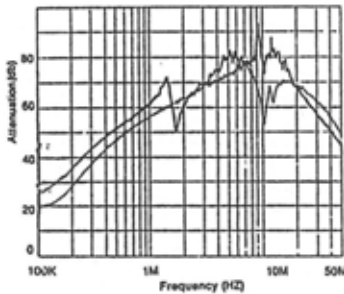
## SPECIFICATIONS

ITEM	MODEL	YH10T4/YH10T4-1	YH15T4/YH15T4-1	YH20T4/YH20T4-1	YH30T4/YH30T4-1
RATED VOLTAGE		250V AC/500V AC	250V AC/500V AC	250V AC/500V AC	250V AC/500V AC
RATED CURRENT		10A	15A	20A	30A
LEAK CURRENT		1.3mA MAX 250V 50HZ 3.0mA MAX 500V 50HZ	1.3mA MAX 250V 50HZ 3.0mA MAX 500V 50HZ	1.3mA MAX 250V 50HZ 3.0mA MAX 500V 50HZ	1.3mA MAX 250V 50HZ 3.0mA MAX 500V 50HZ
TEST VOLTAGE	LINE TO LINE	1450V DC	1450V DC	1450V DC	1450V DC
	LINE TO GROUND	2250V DC	2250V DC	2250V DC	2250V DC
INSULATION RESISTANCE		100MΩ MIN 250V DC 100MΩ MIN 500V DC	100MΩ MIN 250V DC 100MΩ MIN 500V DC	100MΩ MIN 250V DC 100MΩ MIN 500V DC	100MΩ MIN 250V DC 100MΩ MIN 500V DC
DIRECT CURRENT RESISTANCE		0.5Ω MAX	0.2Ω MAX	0.15Ω MAX	0.10Ω MAX
TEMPERATURE RISE		30°C MAX	30°C MAX	30°C MAX	30°C MAX
OPERATING TEMPERATURE		-25 ~ +85°C	-25 ~ +85°C	-25 ~ +85°C	-25 ~ +85°C
ATTENUATION	NORMAL MODE 25db MIN	0.16 ~ 50MHZ	0.80 ~ 50MHZ	0.80 ~ 50MHZ	1.38 ~ 50MHZ
	COMMON MODE 25db MIN	0.24 ~ 50MHZ	0.20 ~ 50MHZ	0.40 ~ 50MHZ	0.70 ~ 50MHZ

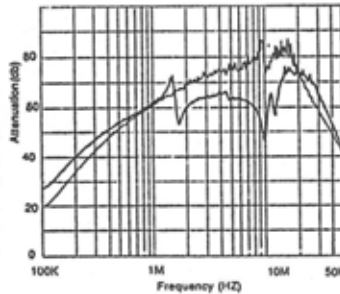


## NOISE ATTENUATION ( ——— NORMAL MODE, ——— COMMON MODE )

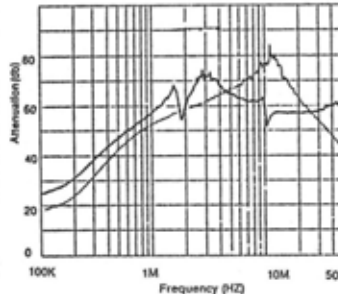
YH10T4/YH10T4-1



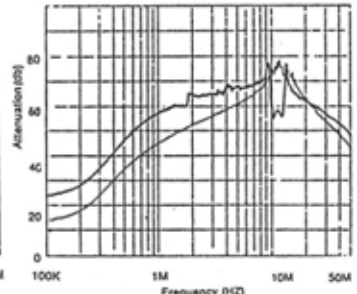
YH15T4/YH15T4-1



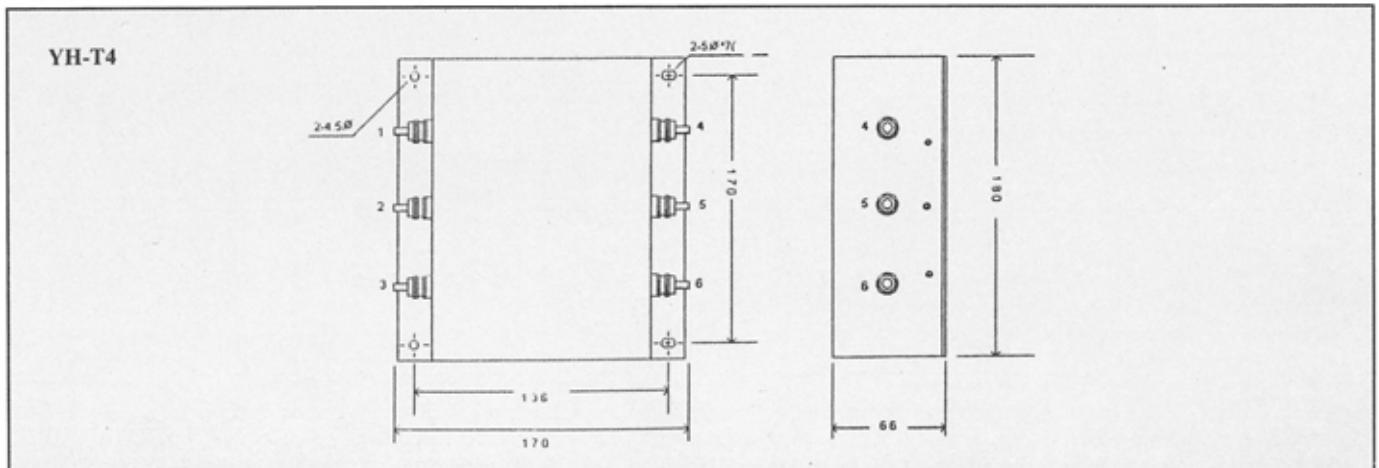
YH20T4/YH20T4-1



YH30T4/YH30T4-1



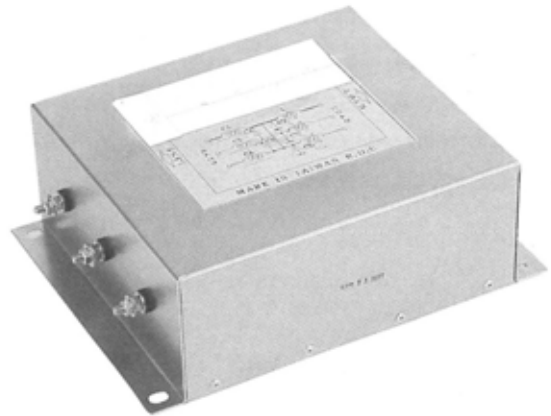
## DIMENSION



# YI-T7 SERIES

## FEATURES:

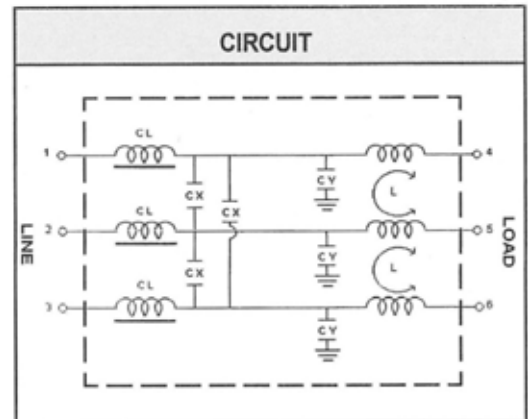
- Good noise attenuation in both forward and reverse directions for common mode and normal mode.
- High reliability designed for industrial equipment usage with 3 phases, 250v/500 vac



YI-T7

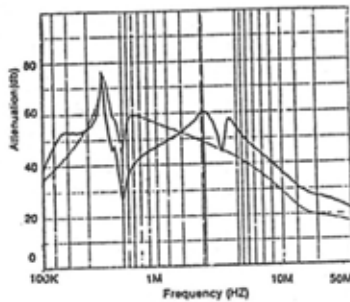
## SPECIFICATIONS

ITEM	MODEL	YI40T7/YI40T7-1	YI50T7/YI50T7-1	YI60T7/YI60T7-1
RATED VOLTAGE		250V AC/500V AC	250V AC/500V AC	250V AC/500V AC
RATED CURRENT		40A	50A	60A
LEAK CURRENT		1.3mA MAX250V,50HZ 3.0mA MAX 500V,50HZ	1.3mA MAX250V,50HZ 3.0mA MAX 500V,50HZ	1.3mA MAX250V,50HZ 3.0mA MAX 500V,50HZ
TEST VOLTAGE	LINE TO LINE	1450V DC	1450V DC	1450V DC
	LINE TO GROUND	2250V DC	2250V DC	2250V DC
INSULATION RESISTANCE		100MΩ MIN 250V DC 100MΩ MIN 500V DC	100MΩ MIN 250V DC 100MΩ MIN 500V DC	100MΩ MIN 250V DC 100MΩ MIN 500V DC
DIRECT CURRENT RESISTANCE		0.08Ω MAX	0.06 ΩMAX	0.04Ω MAX
TEMPERATURE RISE		30°C MAX	30°C MAX	30°C MAX
OPERATING TEMPERATURE		-25 ~ +85°C	-25 ~ +85°C	-25 ~ +85°C
ATTENUATION	NORMAL MODE 25db MIN	0.14 ~ 50MHZ	0.17 ~ 50MHZ	0.30 ~ 9.5MHZ
	COMMON MODE 25dbMIN	0.25 ~ 50MHZ	0.31 ~ 50MHZ	0.42~ 50MHZ

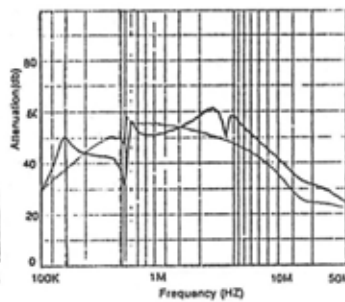


## NOISE ATTENUATION ( ——— NORMAL MODE, ——— COMMON MODE )

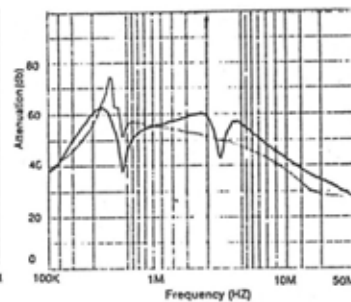
YI40T7/YI40T7-1



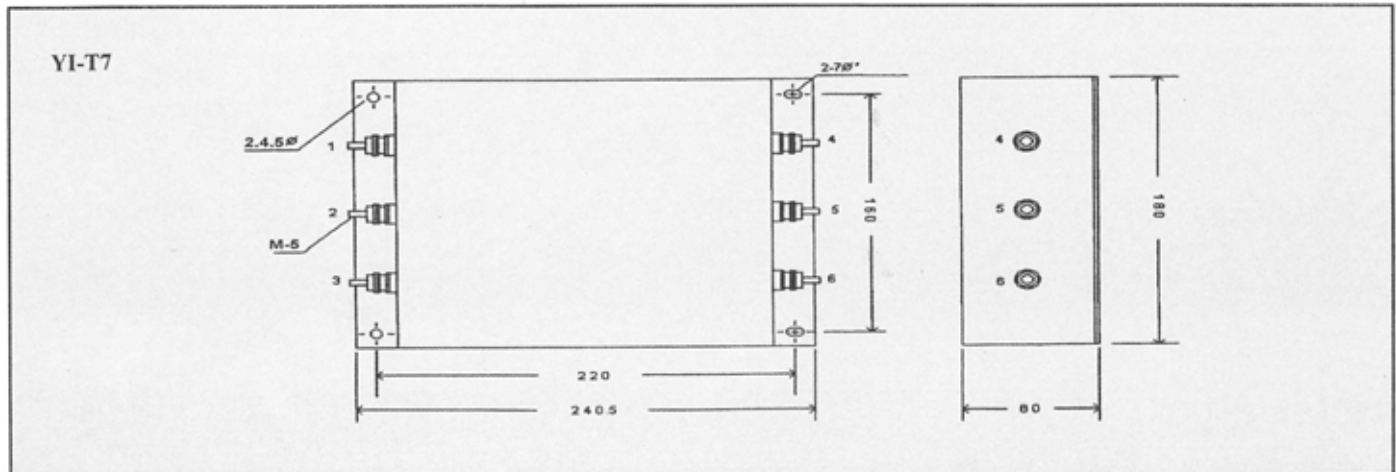
YI50T7/YI50T7-1



YI60T7/YI60T7-1



## DIMENSION



# YP-T8,T10,YP-T12 SERIES

## ■ FEATURES:

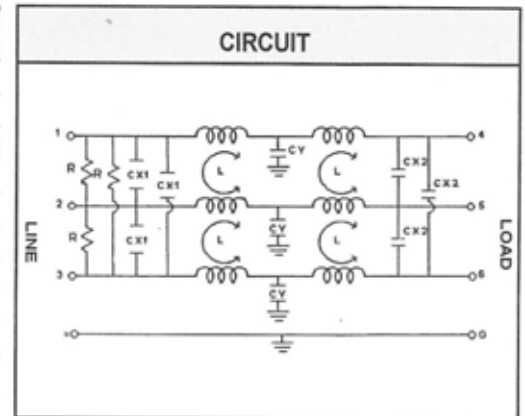
- Good noise attenuation in both forward and reverse directions for common mode and normal mode.
- High reliability designed for industrial equipment usage with 3 phases, 500 vac



YP

## ■ SPECIFICATIONS

ITEM	MODEL	YP60T8	YP80T8	YP100T8	YP150T8
RATED VOLTAGE		500V AC	500V AC	500V AC	500V AC
RATED CURRENT		60A	80A	100A	150A
LEAK CURRENT		82mA MAX 500V,50HZ	82mA MAX 500V,50HZ	82mA MAX 500V,50HZ	82mA MAX 500V,50HZ
TEST VOLTAGE	LINE TO LINE	1450V DC	1450V DC	1450V DC	1450V DC
	LINE TO GROUND	2250V DC	2250V DC	2250V DC	2250V DC
INSULATION RESISTANCE		100MΩ MIN 500V DC	100MΩ MIN 500V DC	100MΩ MIN 500V DC	100MΩ MIN 500V DC
DIRECT CURRENT RESISTANCE		0.04Ω MAX	0.04Ω MAX	0.04Ω MAX	0.04Ω MAX
TEMPERATURE RISE		30°C MAX	30°C MAX	30°C MAX	30°C MAX
OPERATING TEMPERATURE		-25 ~ +85°C	-25 ~ +85°C	-25 ~ +85°C	-25 ~ +85°C



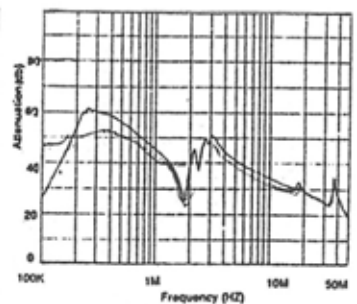
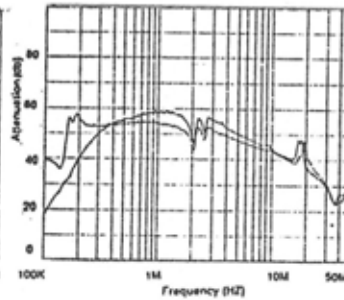
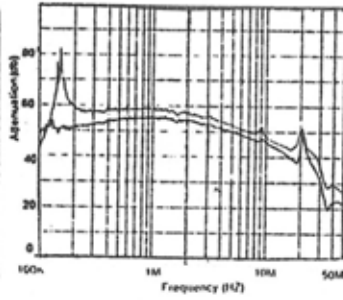
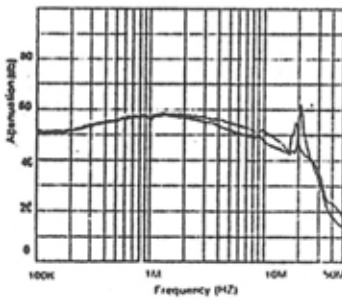
## ■ NOISE ATTENUATION ( — NORMAL MODE, — COMMON MODE)

YP60T8

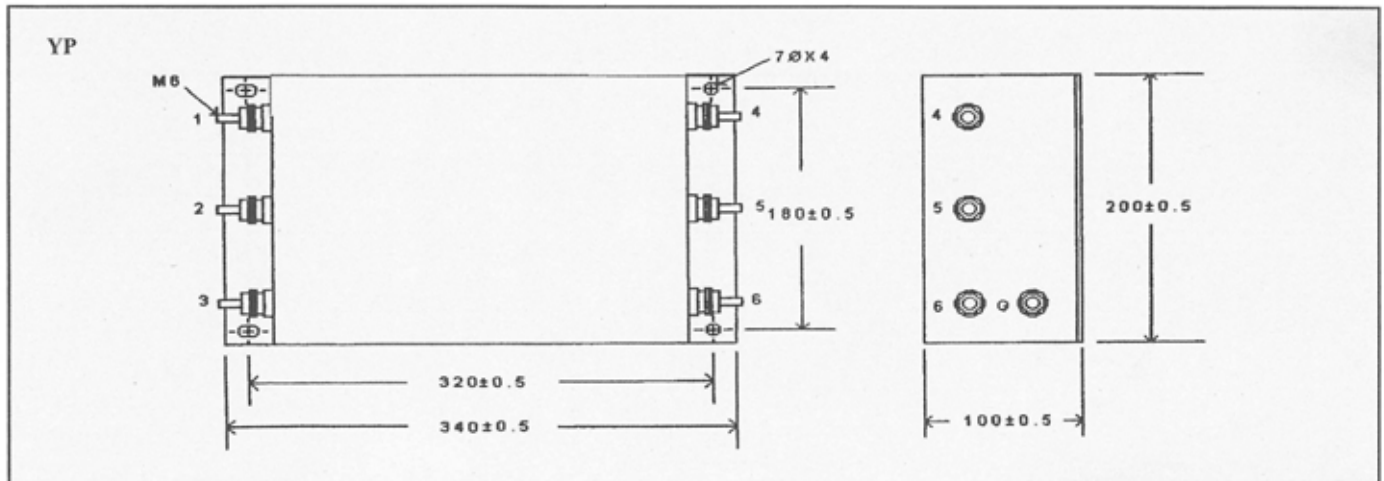
YP80T10

YP100T10

YP150T12



## ■ DIMENSION(mm)

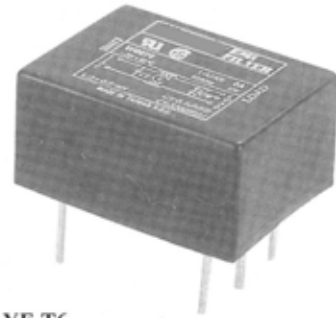




# YF-T6 SERIES

## FEATURES

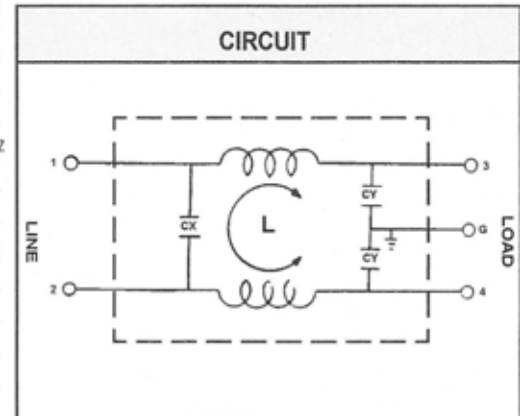
- Low cost type
- Printed circuit terminals
- All parts are approved by UL and CSA



YF-T6

## SPECIFICATIONS

ITEM	MODEL	YF01T6	YF03T6	YF06T6	YF10T6
RATED VOLTAGE		250V AC	250V AC	250V AC	250V AC
RATED CURRENT		1A	3A	6A	10A
LEAK CURRENT		0.8mA MAX 250V,50HZ	0.8mA MAX 250V,50HZ	0.8mA MAX 250V,50HZ	0.8mA MAX 250V,50HZ
TEST VOLTAGE	LINE TO LINE	1450V DC	1450V DC	1450V DC	1450V DC
	LINE TO GROUND	2250V DC	2250V DC	2250V DC	2250V DC
INSULATION RESISTANCE		100MΩ MIN 250V DC	100MΩ MIN 250V DC	100MΩ MIN 250V DC	100MΩ MIN 250V DC
DIRECT CURRENT RESISTANCE		0.5Ω MAX	0.2Ω MAX	0.15Ω MAX	0.1MAX
TEMPERATURE RISE		30°C MAX	30°C MAX	30°C MAX	30°C MAX
OPERATING TEMPERATURE		-25 ~ +85°C	-25 ~ +85°C	-25 ~ +85°C	-25 ~ +85°C
ATTENUATION	NORMAL MODE 25db MIN	0.50 ~ 50MHZ	0.70 ~ 40MHZ	1.00 ~ 50MHZ	1.50 ~ 50MHZ
	COMMON MODE 25dbMIN	0.10 ~ 50MHZ	0.20 ~ 35MHZ	0.70 ~ 50MHZ	1.50 ~ 50MHZ



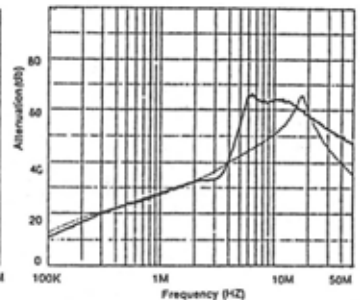
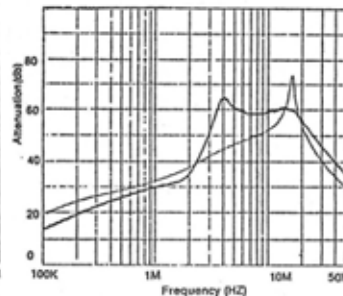
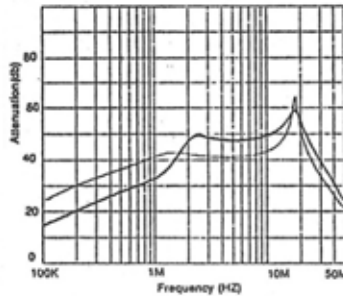
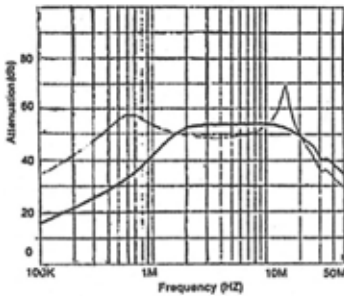
## NOISE ATTENUATION ( — NORMAL MODE, — COMMON MODE )

YF01T6

YF03T6

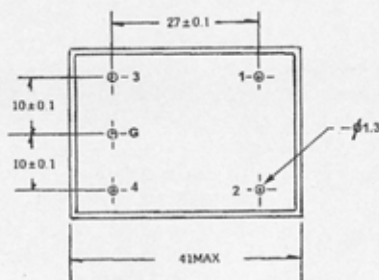
YF06T6

YF10T6



## DIMENSION

YF-T6



端子:  $\phi 1.3$   
TERMINALS: P-IN TERMINALS  $\phi 1.3$

OTHER IEC FILTER PRODUCTS

PLEASE ENQUIRE FOR DETAILS



**Power entry modules with mains filter**  
**Types KPF, KFA, KFB II, KFC, CD, CE, CG**  
 for medical applications

Technical data

I <sub>n</sub> (A) T <sub>a</sub> 45 °C*	U <sub>n</sub> (V)	Max. leakage curr. (µA) @ 250 V/50 Hz	C <sub>2</sub> (nF)	L (mH)	Test voltage	
					L,N→E	L→N
1	up to 250 V max. 50/60 Hz	< 5	68	10	2 kV 50 Hz 2 sec.	1625 V DC 2 sec.
2		< 5	68	4		
4		< 5	68	1,5		
6		< 5	68	0,8		
10		< 5	68	0,3		

\* VDE T<sub>a</sub> 40 °C

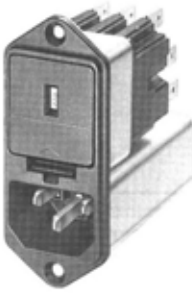

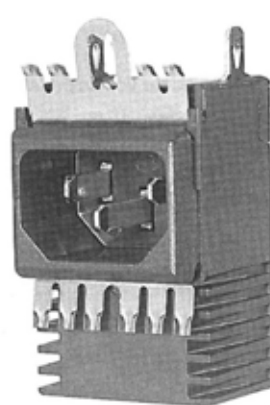
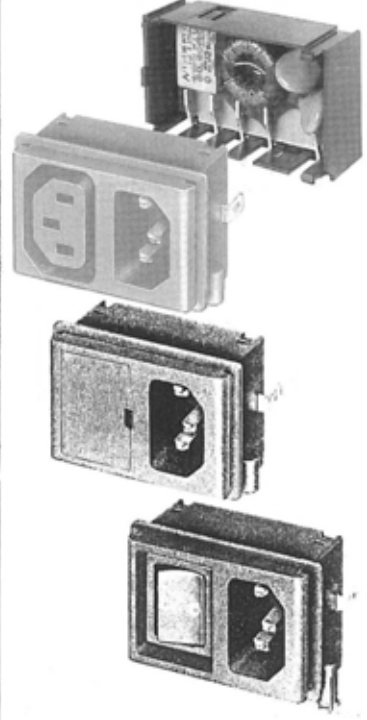




- Further specifications see pages standard types
- Attenuation loss available on request

Order No. Socket KFA fuse-drawer "Extra-Safe" must be ordered separately

Order No. Socket CD fuse-drawer "Extra-Safe" and Bowden cable must be ordered separately

Fuseholder	Voltage selector	I <sub>n</sub> (A) T <sub>a</sub> 45 °C
2-pole	max. 3 pos.	
4301.5241	•	1
4301.5243	•	2
4301.5245	•	4
4301.5247	•	6
4301.5249	•	10

Rocker switch non illuminated	Bowden cable actuation	Fuseholder 2-pole	Volt. selector max. 4 pos.	I <sub>n</sub> (A) T <sub>a</sub> 45 °C
CDG4.4101.151	CDG4.4199.151	•	•	1
CDA4.4101.151	CDA4.4199.151	•	•	2
CDC4.4101.151	CDC4.4199.151	•	•	4
CDE4.4101.151	CDE4.4199.151	•	•	6
CDL4.4101.151		•	•	10

<p><b>Power entry modules Type CE</b>                  with mains filter for standard and medical applications with fuseholder and voltage selector with series-parallel connections</p> 	<p><b>Power entry modules with mains filter Type CG</b>                  with fuseholder, voltage selector and On/Off switch with or without Bowden cable actuation</p> 	<p><b>NEW</b>  <b>Appliance inlet Type GRF4 with mains filter and EM-Shield</b>                  For standard or medical applications</p> 	<p><b>NEW</b>  <b>Power entry modules Type KPF</b>                  "Backpack" RFI filter for standard or medical applications for PCB mount</p> 
<p><b>Power entry modules Type 54 FELCOM</b>                  with mains filter Standard-Combinations</p>  <p>5411.XX5X.XXX</p>	 <p>5431.X05X.XXX</p>  <p>5432.XX5X.XXX</p>	<p><b>Appliance inlet Type 5100/5110</b>                  with mains filter for standard or medical applications</p>  <p>Snap-in mounting</p>	



## OTHER FILTERS

This catalogue contains our regular filter product range at time of printing. If these do not meet your requirements, please enquire. Many other products are available to customer order, and new products are under development.

All specifications in this catalogue are subject to change without notice. Technical data is provided to assist the customer, but no responsibility is accepted for the end use of any product. Any offers made or orders accepted are subject to Arlin's standard Terms and Conditions.

### OTHER PRODUCTS AVAILABLE:



**ARLIN**

28 Commercial Drive Thomastown Vic 3074

PHONE: 1300 362 191 FAX: 03 9465 5088