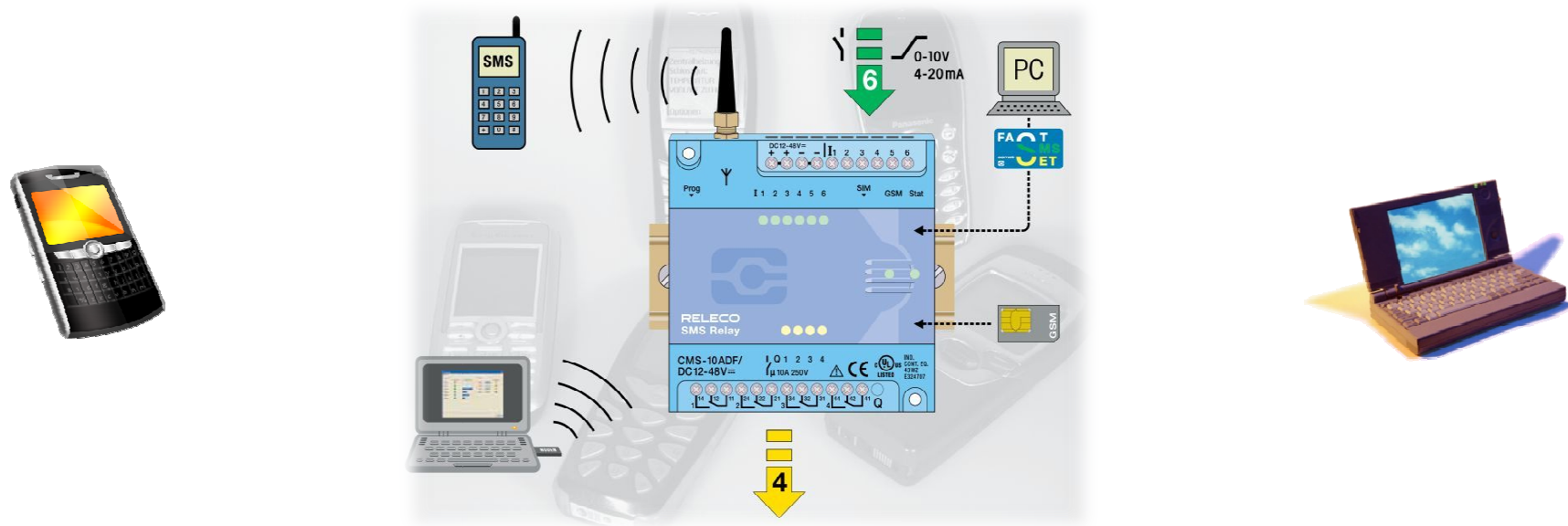




Automation relay for remote monitoring and control

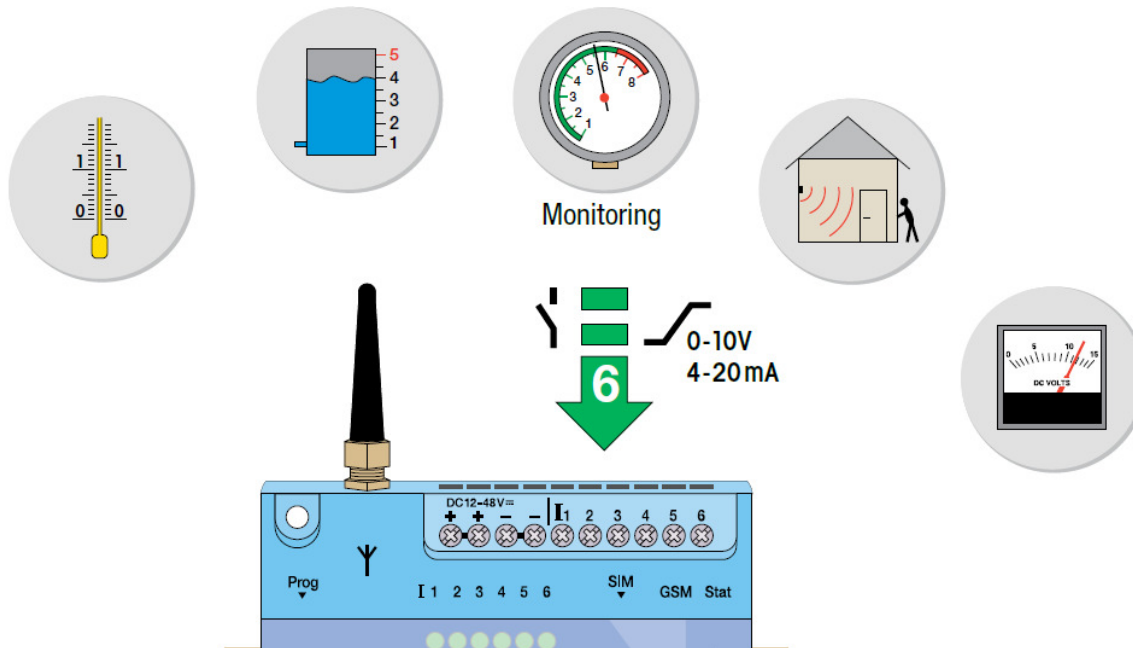


REMOTE AUTOMATION MONITORING & CONTROL

- Six inputs for sensors, transducers, switches.
- SMS and email out upon input activation.
- 4 C/O outputs 5A 250V.
- SMS in to control / command output switching.
- Wide application possibilities – used worldwide.



INPUTS – BINARY OR ANALOGUE



Digital (binary) inputs

- Trigger voltage 9.5V DC / 85V AC

Analogue inputs

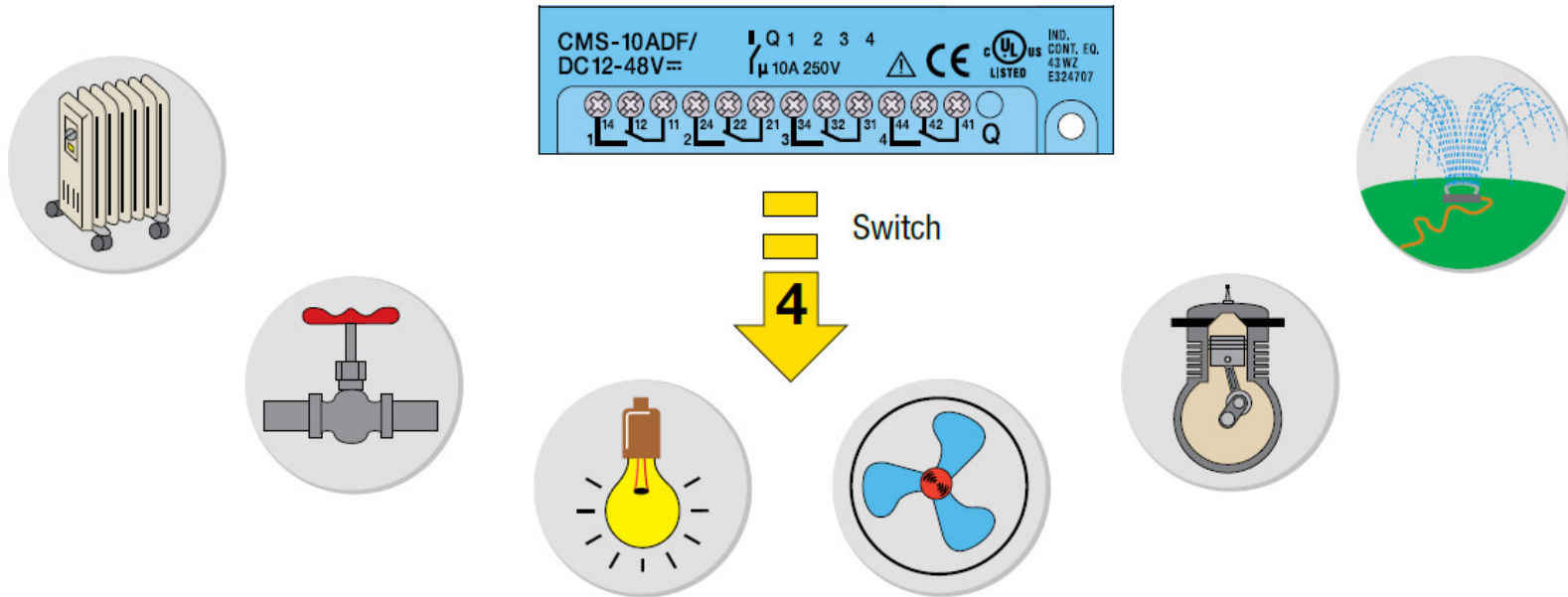
- Select 0 – 10 V or 4 – 20 mA.
- Selectable units, eg. l, kg, m3, psi, F, sqm, lbs.
- Any min/max value can be defined. Scale adjustment automatic.
- Automatic alerting if min/max values are exceeded.

COMMUNICATION



- Operates on 3G and GSM networks
- Internal contacts list – mobile phone and email addresses.
- Alarm message sent to (max) 5 contacts on input activation/high, by SMS or email.
- Second message sent upon normal input state being reached again.
- Periodic status reporting for data log.
- SMS into device to enquire input & output status from any recognized phone number.
- SMS into device to control & switch outputs any recognized phone number.
- App for Android operated smartphones.

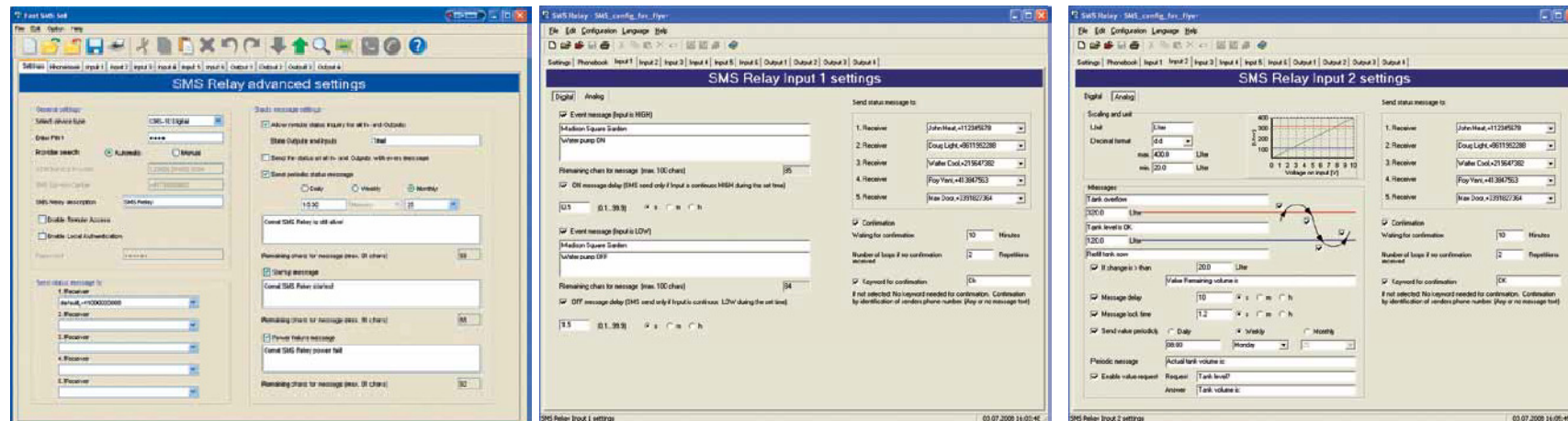
OUTPUTS – ELECTROMECHANICAL



- Four C/O relay outputs
- Controlled remotely by SMS
- Rated 250V, 5A




CONFIGURATION SOFTWARE

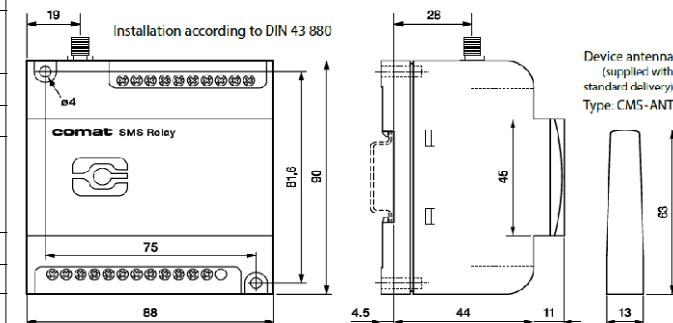


- Simple Windows based software
- Set device name & details
- Set all custom messages
- Set all analogue input thresholds
- Add contacts details
- Label inputs and outputs
- Set desired output control messages
- Programmable by remoted control using a GSM modem
- Supplied on disk and downloadable



TECHNICAL DATA

Type	CMS-10F/AC110-240V	CMS-10F/DC12-48V	CMS-10ADF/DC12-48V	CMS-10ACDF/DC12-48V
Operating voltage	AC 110-240VA 50/60Hz	DC 12-48VD $\nabla\nabla$ max. 10%	DC 12-48 VD $\nabla\nabla$ max. 10%	DC 12-48VD $\nabla\nabla$ max. 10%
Power consumption	8VA/6W	4,2W	4,2W	4,2W
Switching capacity 	4x 10A 250V; Sum of current max. 20A			
Temperature range	Tu: -25...+55° C; Rel. humidity: 10...95% (non condensing); Protection IP20			
Inputs	6x digital (trigger level 85Va)	6x digital (trigger level 9,5Vd)	6x digital and /or alalog (trigger level 9,5Vd) (analog 0-10Vd)	2x analog (4-20mA) 4x digital and/or alalog (trigger level 9,5Vd) (analog 0-10V d)
Outputs	4x CO contacts μ 10A/250V AC-1			
Provider (Phone/Network)	User selectable (dependent on SIM card)			
Frequency	GSM QuadBand (850; 900; 1800; 1900MHz)			



Installation note

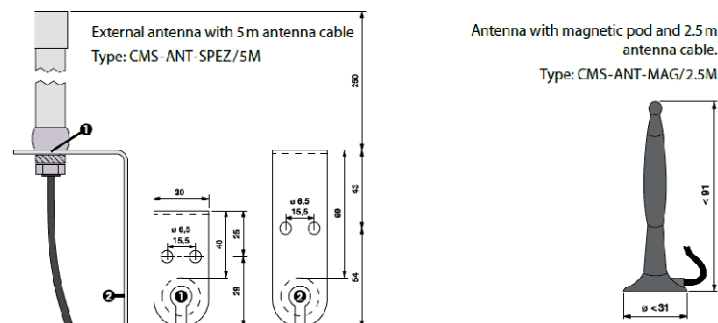
The base unit device is delivered fully operational and includes the small aerial CMS-ANT.

Before installation, the final location of installation must be taken into consideration.

For installation inside a control panel, the small device aerial may not be suitable and needs to be replaced by the antenna with magnetic pod (CMS-ANT-MAG/2.5M) or by the external antenna (CMS-ANT-SPEZ/5M).

These two antennas provide considerably better results and improve communication with the mobile network.

Please ask our product specialists if you require any support.



ARLIN PTY LTD

ADDRESS

28 Commercial Drive
Thomastown VIC 3074
AUSTRALIA

NATIONAL SALES

☎ **1300 362 191**

✉ **sales@arlin.com.au**

INTERNATIONAL

TEL: +61 3 9465 0011
FAX: +61 3 9465 5088

www.arlin.com.au

